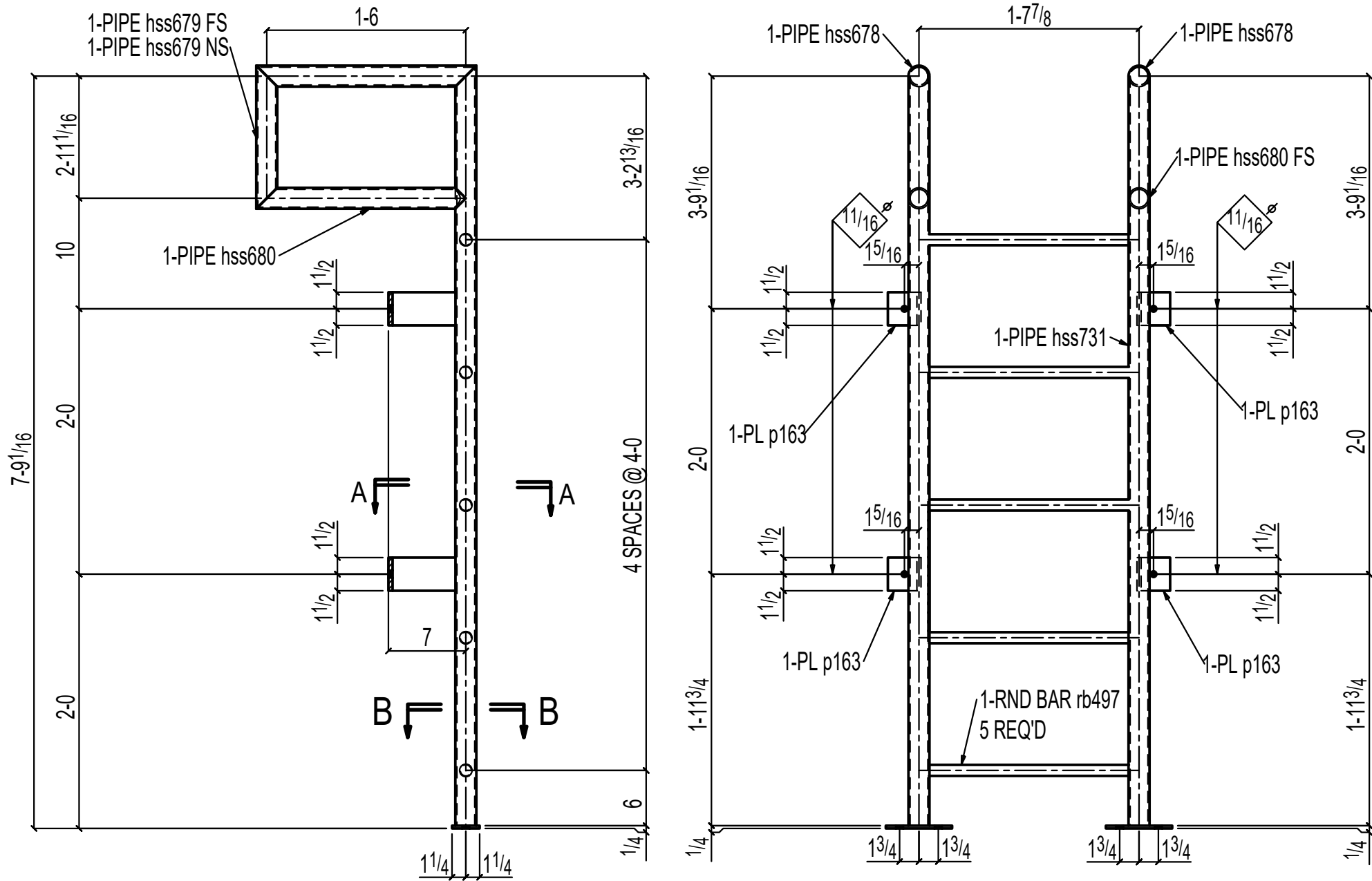


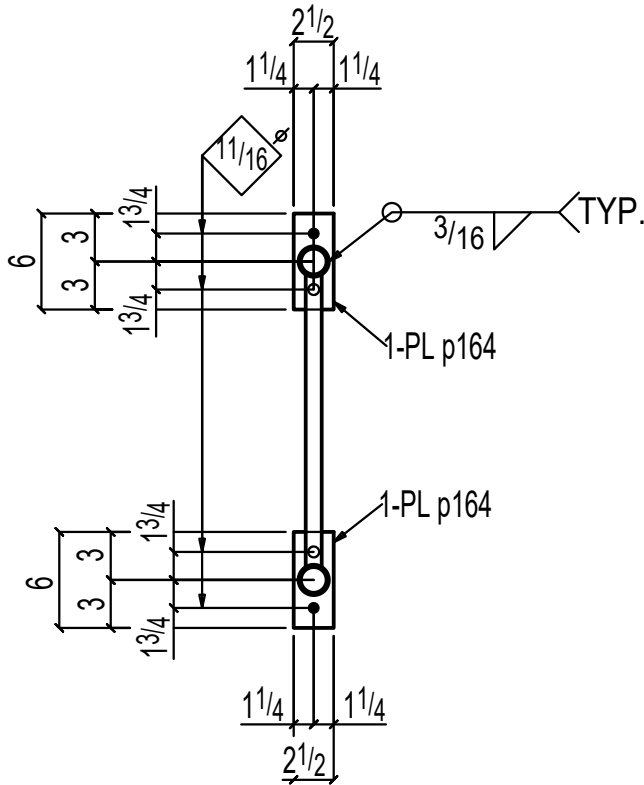
PRINTED: Jun 03 2020 10:22:43 AM

NOTE:
 1.) ALL HANDRAILS ARE TO BE WELDED 3/16" CONT. & GROUND SMOOTH. ROUND CORNERS TYP.

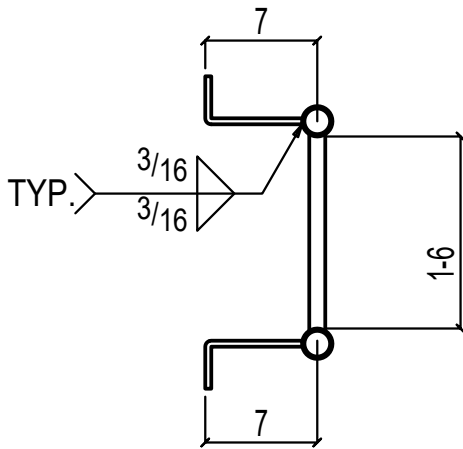


ONE MISC 2L1

FIELD BOLTS:
 8-1/2Diax4 WEDGE



Section B-B
 2L1



Section A-A
 2L1

BILL OF MATERIAL

LIFT NO.	LIFT QTY.	NO. OF PIECES	PIECE MARK	MATERIAL	LENGTH FT. IN.	REMARKS	WEIGHT TOTAL	ADVANCE MILL #
1	1	ONE	2L1	MISC			112	17-4
		1	2L1	PIPE 1 1/2 STD	7' 9 3/4"	STAINLESS	21	
		1	hss731	PIPE 1 1/2 STD	7' 9 3/4"	STAINLESS	21	
		2	hss679	PIPE 1 1/2 STD	3' 0 15/16"	STAINLESS	17	
		2	hss678	PIPE 1 1/2 STD	1' 7 7/8"	STAINLESS	9	
		2	hss680	PIPE 1 1/2 STD	1' 6 15/16"	STAINLESS	9	
		5	rb497	SERRATED ROD	1' 7 7/8"	STAINLESS	22	
		4	p163	PL 3/8x3	0' 8 5/8"	BENT STAINLESS	11	
		2	p164	PL 1/4x2 1/2	0' 6"	STAINLESS	2	
				FIELD BOLTS				
		8		1/2 Dia WEDGE	0' 4"			

HOLES: 13/16" DIA U.N.O.
 SURFACE PREP: SSPC-SP2 (HAND TOOL)
 FINISH: #4 SATIN
 ELECTRODES: E70XX-(LOW HYDROGEN)

GENERAL NOTES:
 ALL DIMENSIONS FROM END OF MAIN MATERIAL UN.
 ALL VERTICAL SPACING OF HOLES TO BE 3" UN.
 ALL CORNERS TO HAVE 1/2" MINIMUM RADIUS.
 CHARGES FOR CORRECTIVE WORK WILL NOT BE HONORED UNLESS PREVIOUS APPROVAL IS OBTAINED FROM JEFFORDS STEEL AND ENGINEERING COMPANY.
 MEMBERS ARE TO BE ERECTED SO THAT MARKED END IS IN THE SAME LOCATION AS ON THE ERECTION DRAWING.
 ON SHOP BOLTED CLIP ANGLES ON BEAMS: ON PIECE MARK END, INSERT SHOP BOLTS SO THE HEAD OF THE BOLT IS ON THE NEAR SIDE OF BEAM. ON THE NONPIECE MARK END, INSERT BOLTS SO THE HEAD OF THE BOLT IS ON THE FAR SIDE OF BEAM.

STEEL & ENGINEERING COMPANY

P.O. BOX 40 / 4398 ROUTE #22
PLATTSBURGH, NY 12501
PH: 518-561-4061

1	Jun 2 2020	ISSUED FOR FABRICATION
0	Apr 29 2020	ISSUED FOR APPROVAL
REV	DATE	DESCRIPTION

drawn by: EZP	checked by: BTH
date: Jun 03 2020	job no.: 2250-1100

project: PAGE USA NEW WATER STORAGE TANK BUILDING 1 OPPORTUNITY DRIVE JOHNSTOWN, NEW YORK	customer: THE HAYNER HOYT CORPORATION 625 ERIE BOULEVARD WEST SYRACUSE, NEW YORK	sheet: 2L1
--	--	------------