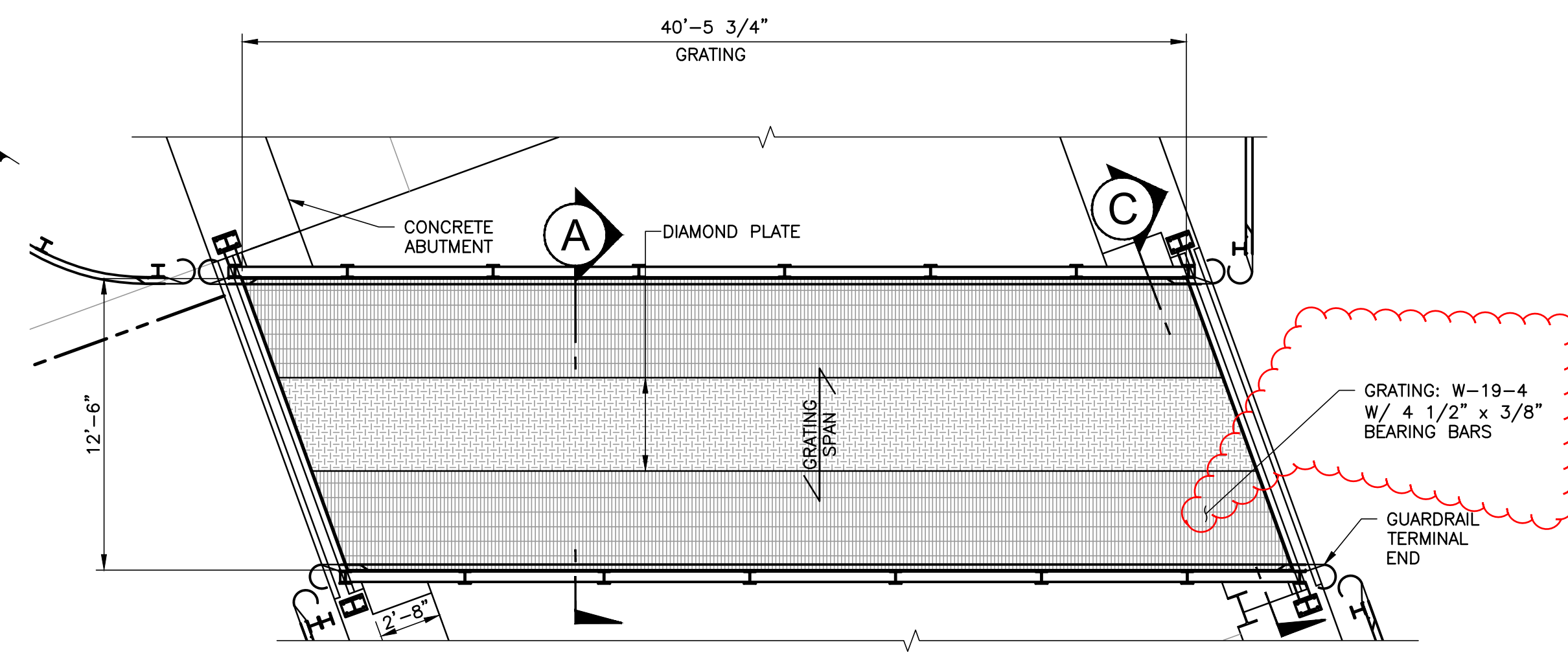
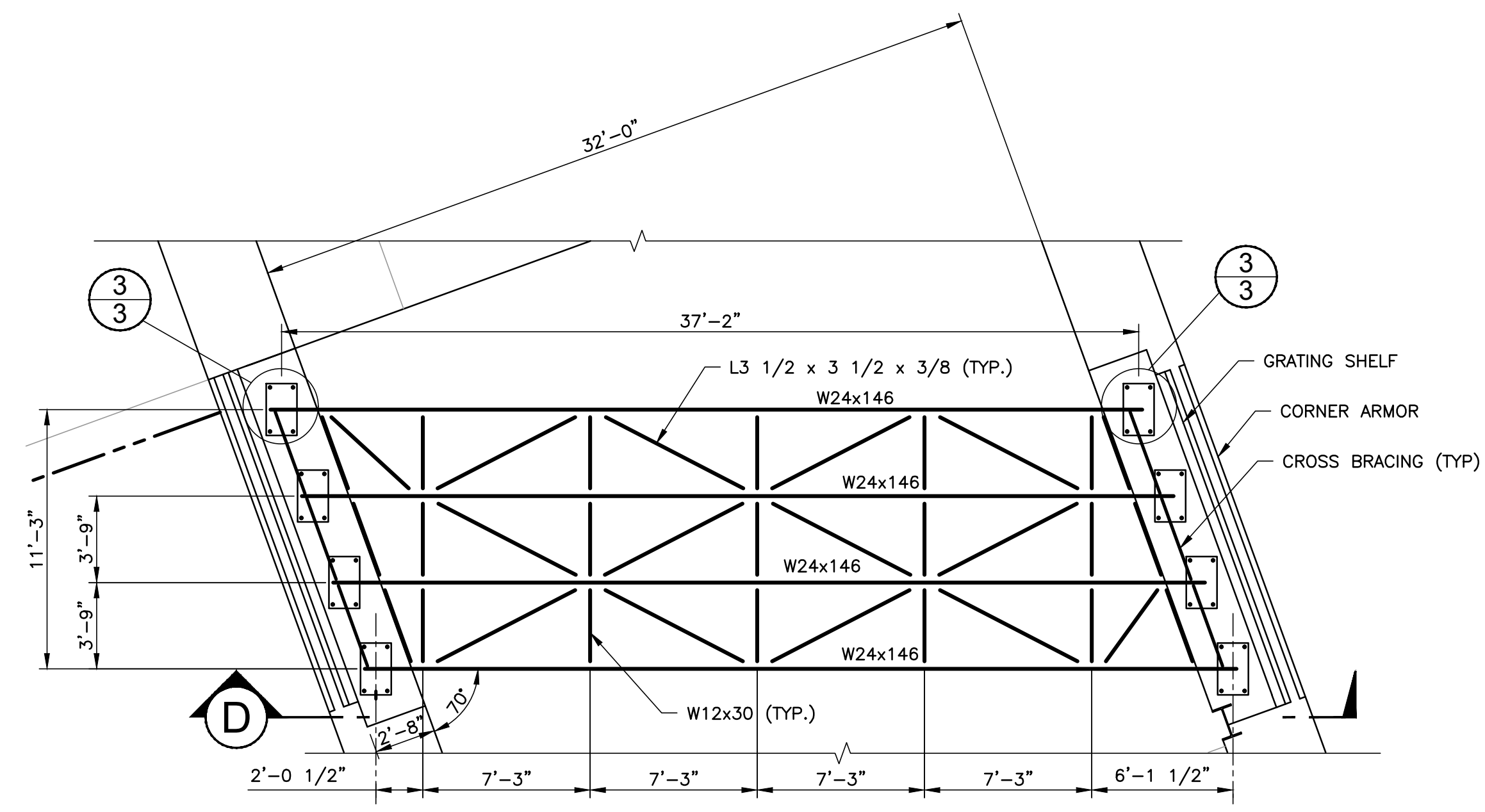


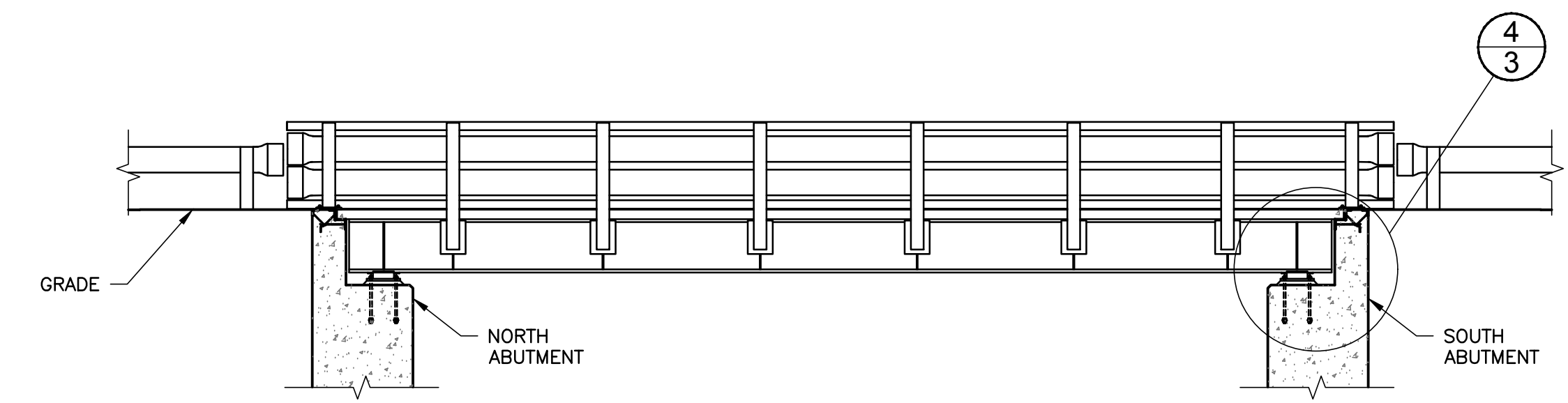
24x36 = FULL SCALE



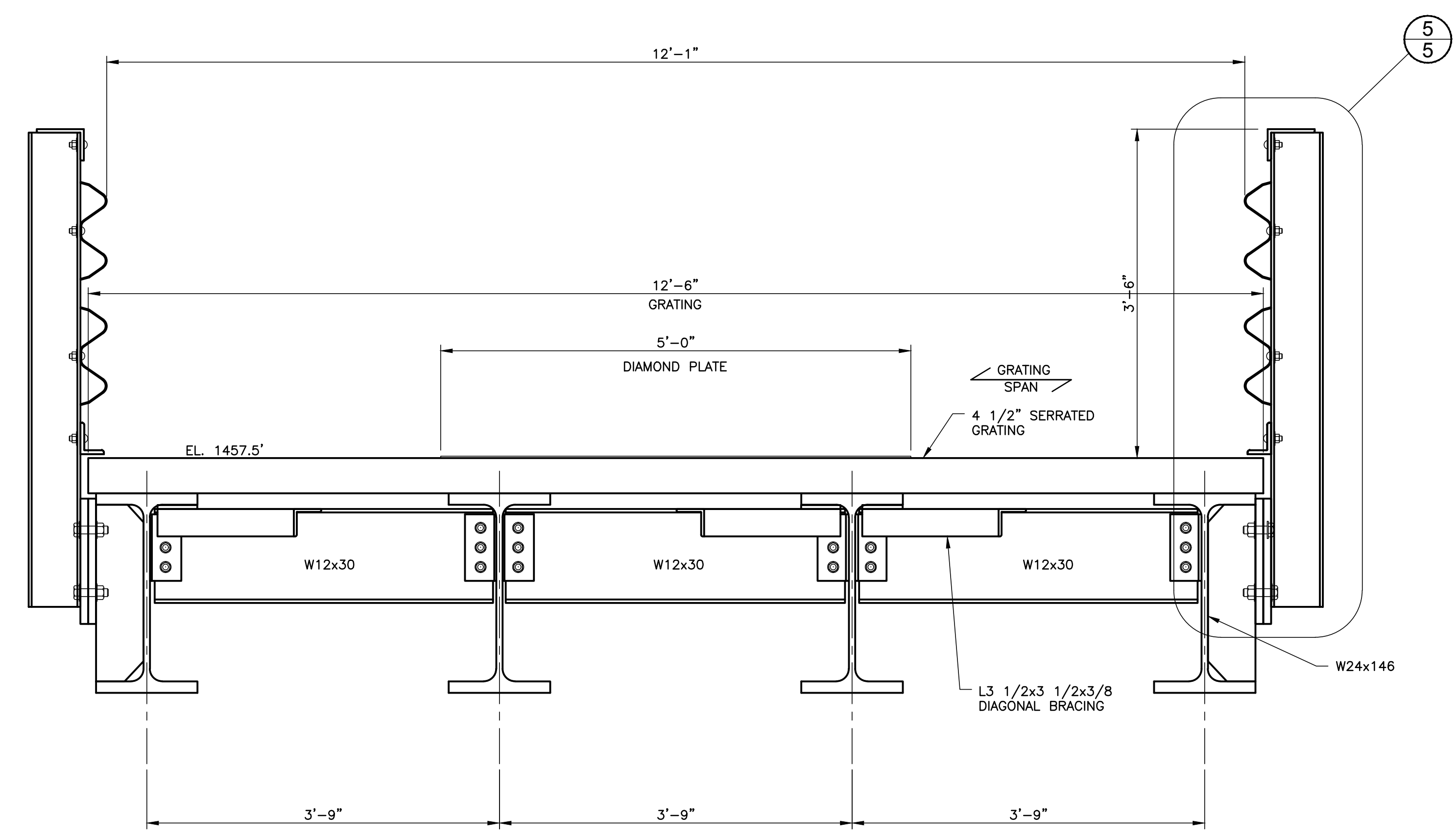
GRATING PLAN AT EL. 1457.5'  
3/16\"= 1'-0\"



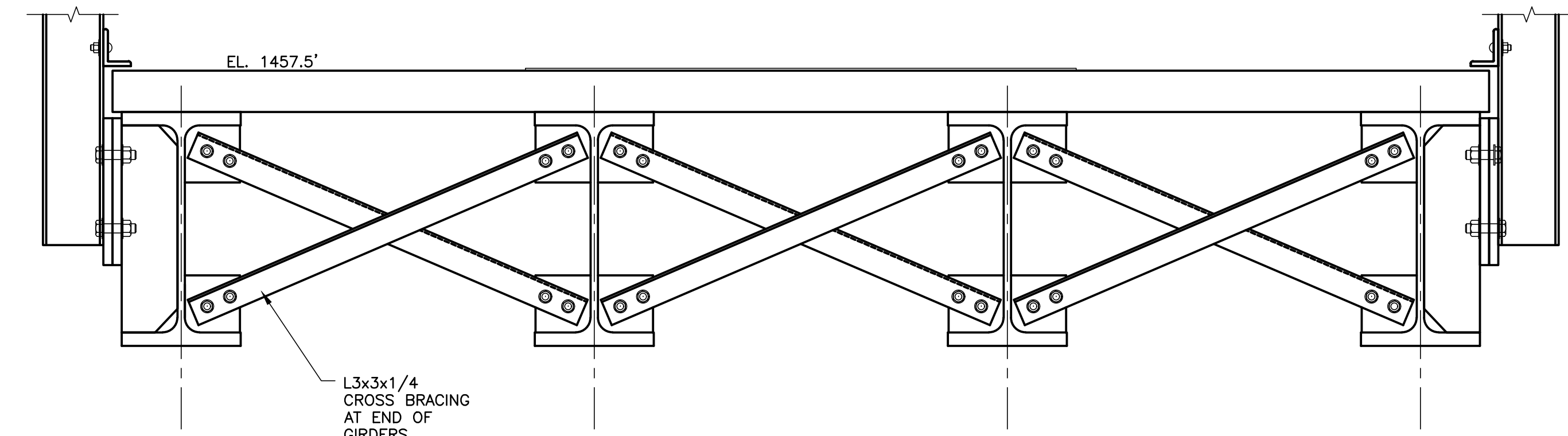
FRAMING PLAN AT EL. 1457.125'  
3/16\"= 1'-0\"



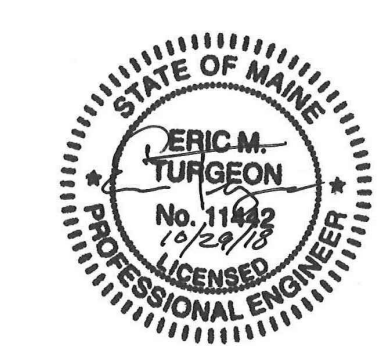
SECTION D  
3/16\"= 1'-0\"



TYPICAL SECTION A-A  
1\"= 1'-0\"



TYPICAL SECTION C-C  
1\"= 1'-0\"



A	ISSUED FOR BID	10-29-18	TLT	KJC
No.	Revision	Date	Drawn	Checked
			EMT	TLT
			TLT	KJC

NOT FOR CONSTRUCTION

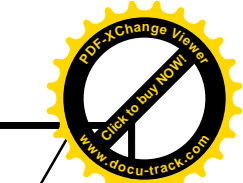
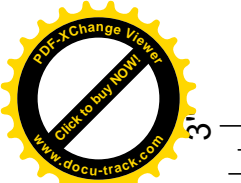
BROOKFIELD RENEWABLE  
LEWISTON, ME

MIDDLE DAM  
RENEWAL PROJECT

AUXILIARY SPILLWAY ACCESS BRIDGE  
GRATING, FRAMING PLAN & TYPICAL SECTION

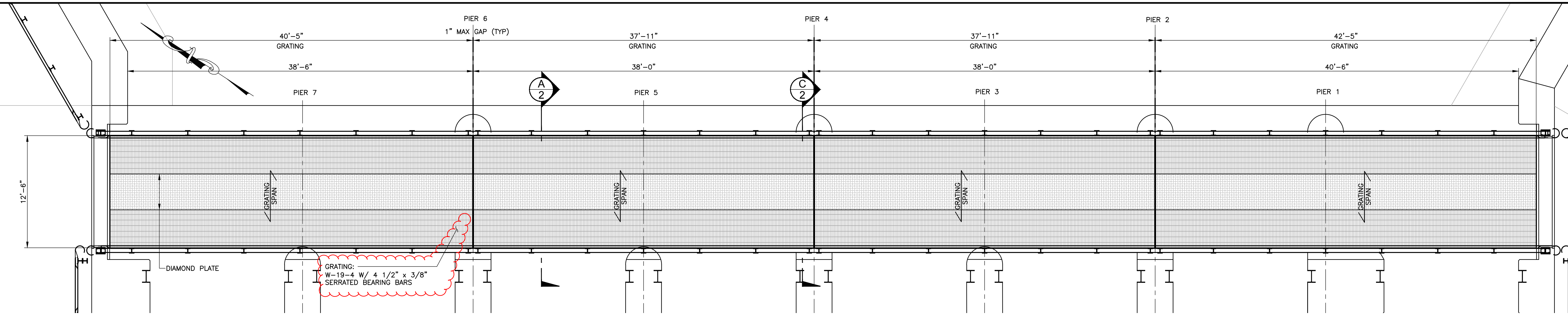
**Kleinschmidt**  
888-224-5942  
KleinschmidtGroup.com

Project No.	Date Revised	Drawing No.
3758023	10-29-18	696-350-02

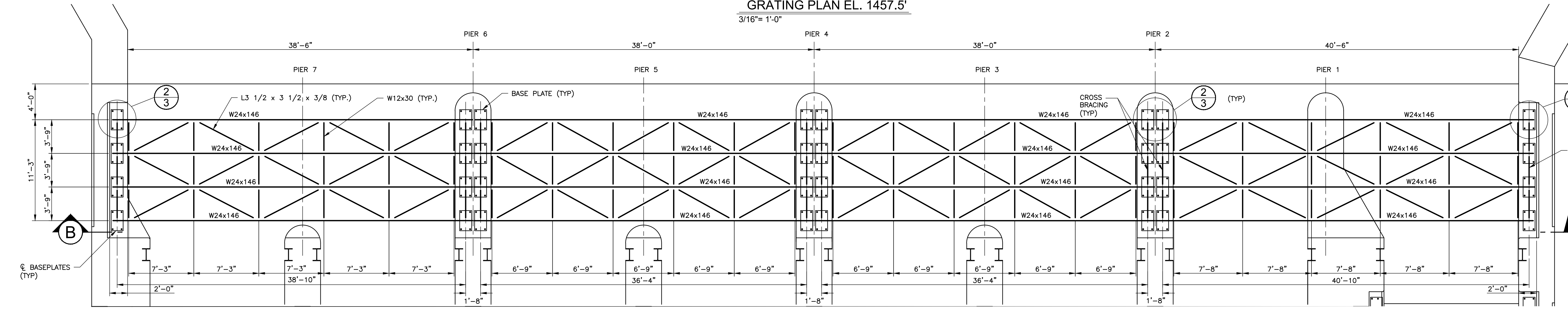


24x36 = FULL SCALE

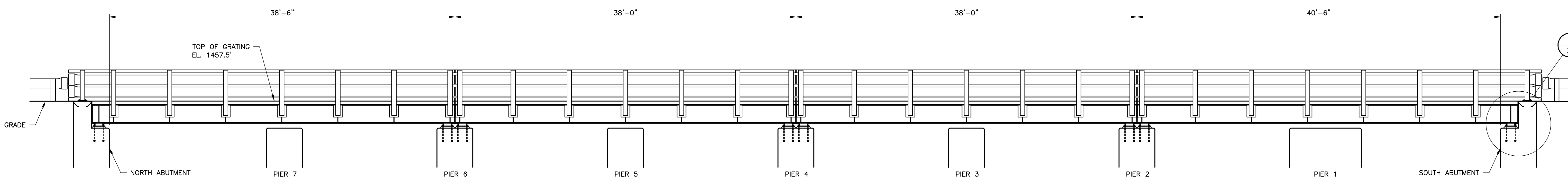
Oct 29, 2018 5:21 PM J:\3758023\Drawings\CAD\3758023 350-SERIES.dwg



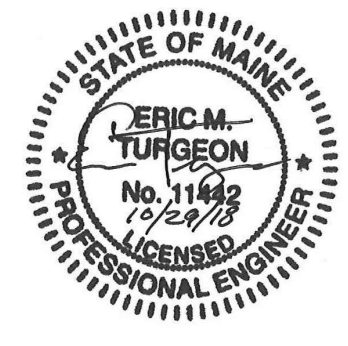
GRATING PLAN EL. 1457.5'  
3/16"= 1'-0"



FRAMING PLAN AT EL. 1457.125'  
3/16"= 1'-0"



SECTION B  
3/16"= 1'-0"



NOT FOR CONSTRUCTION

BROOKFIELD RENEWABLE  
LEWISTON, ME

MIDDLE DAM  
RENEWAL PROJECT

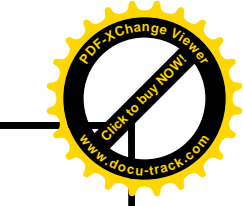
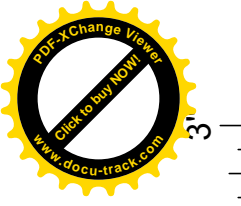
MAIN SPILLWAY ACCESS BRIDGE  
GRATING, FRAMING PLAN AND SECTION

<b>Kleinschmidt</b>	888-224-5942
	KleinschmidtGroup.com

A	ISSUED FOR BID	10-29-18	TLT	KJC
No.	Revision	Date	Drawn	Checked
			EMT	TLT
			TLT	KJC

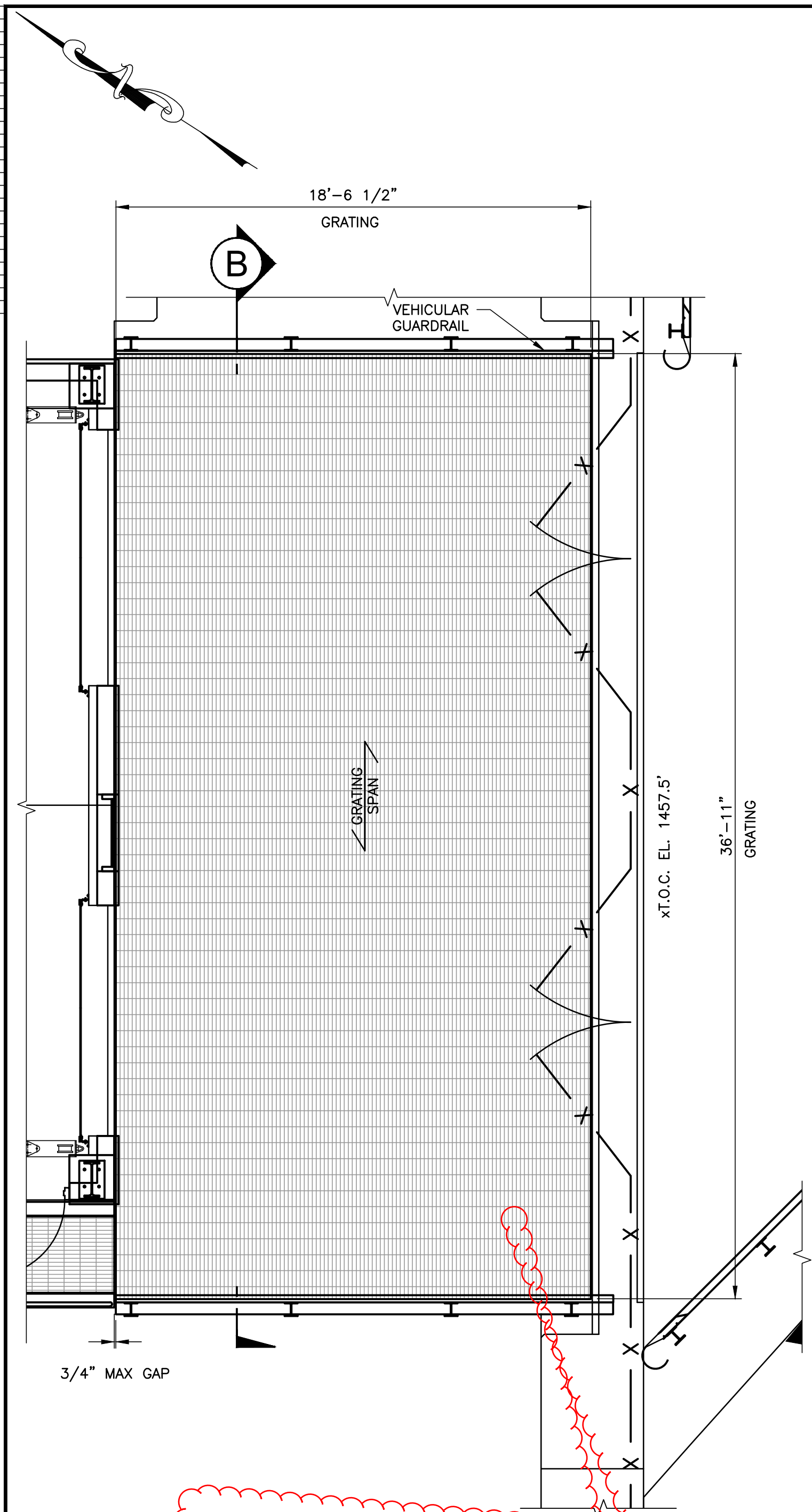
Project No.	Date Revised	Drawing No.
3758023	10-29-18	696-350-01



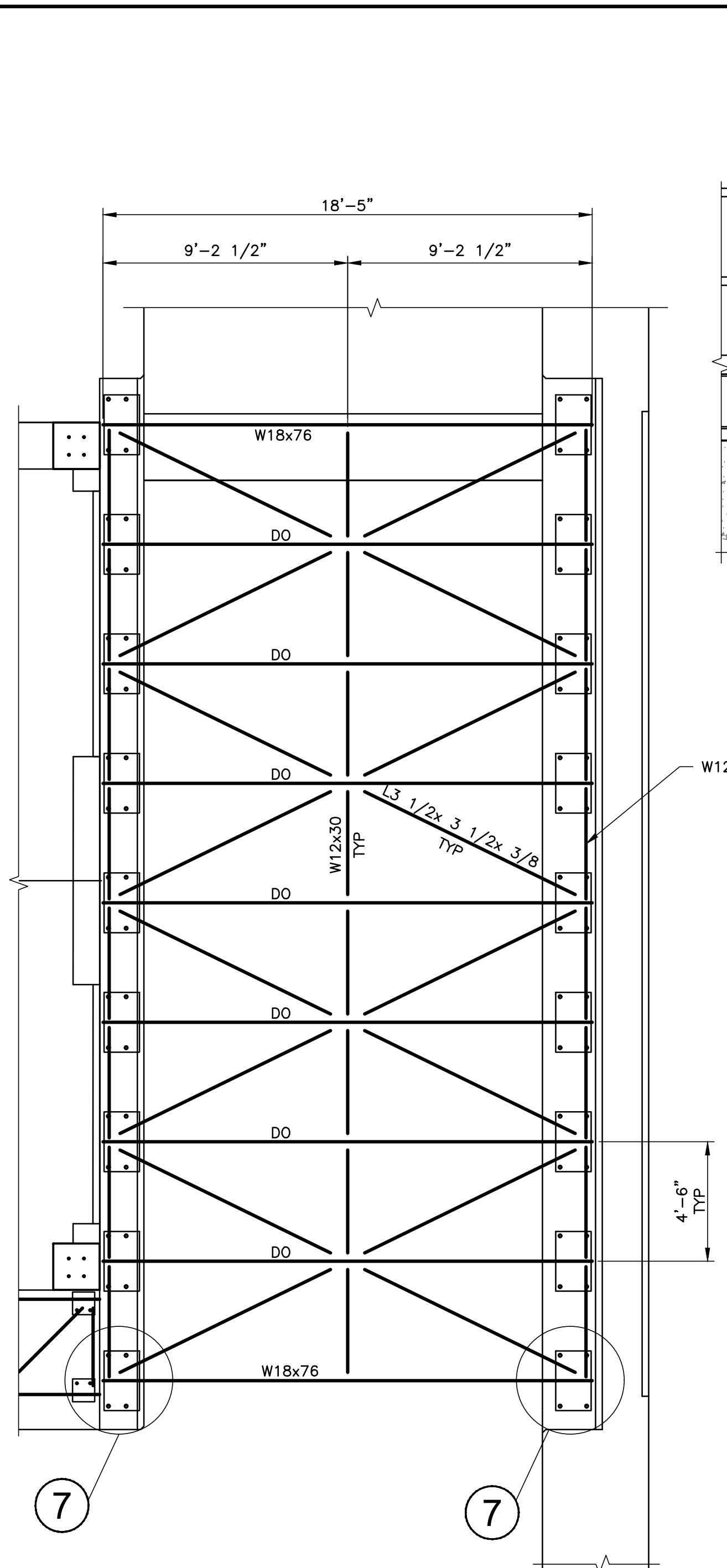


24x36 = FULL SCALE

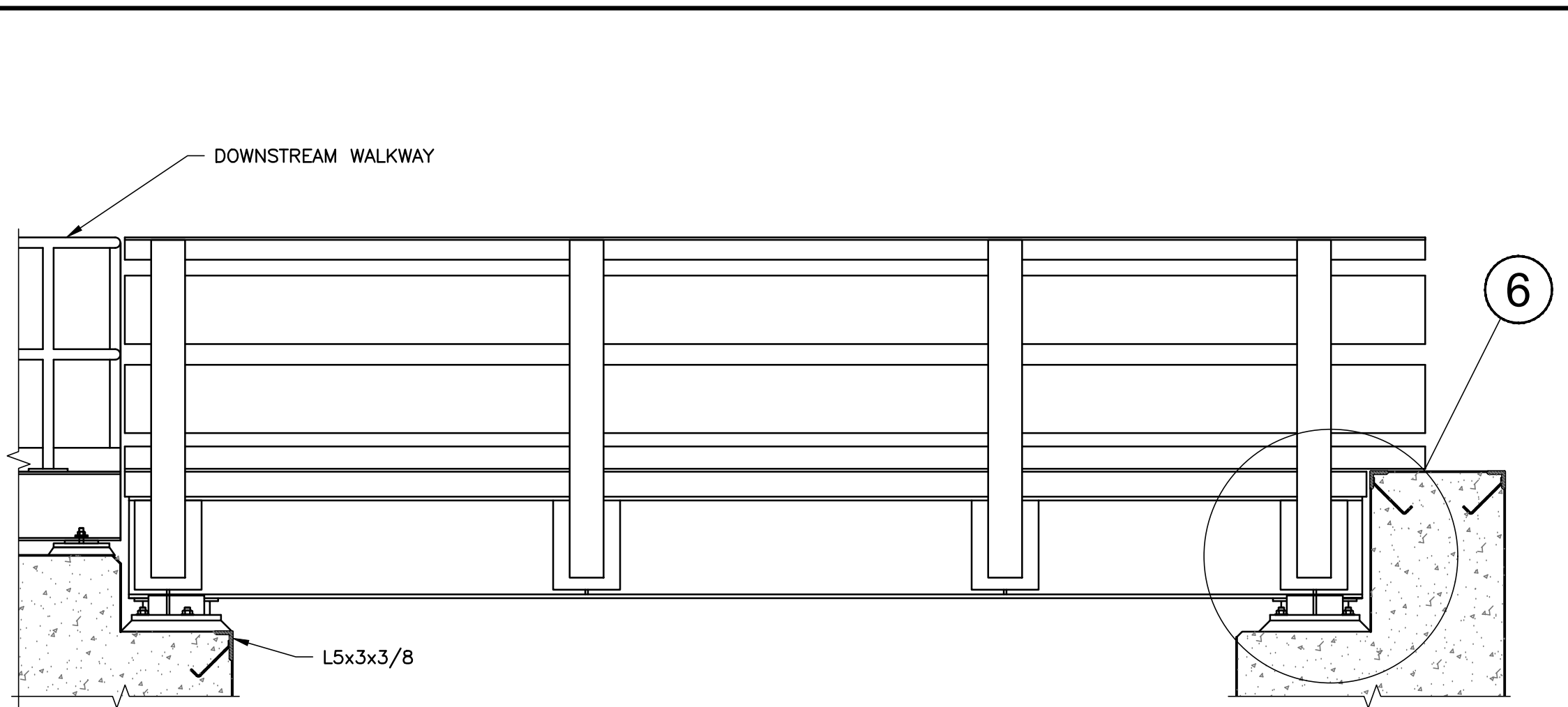
Oct. 20, 2018 - 5:24 PM J:\3758023\Drawings\CAD\3758023 350-SERIES.dwg



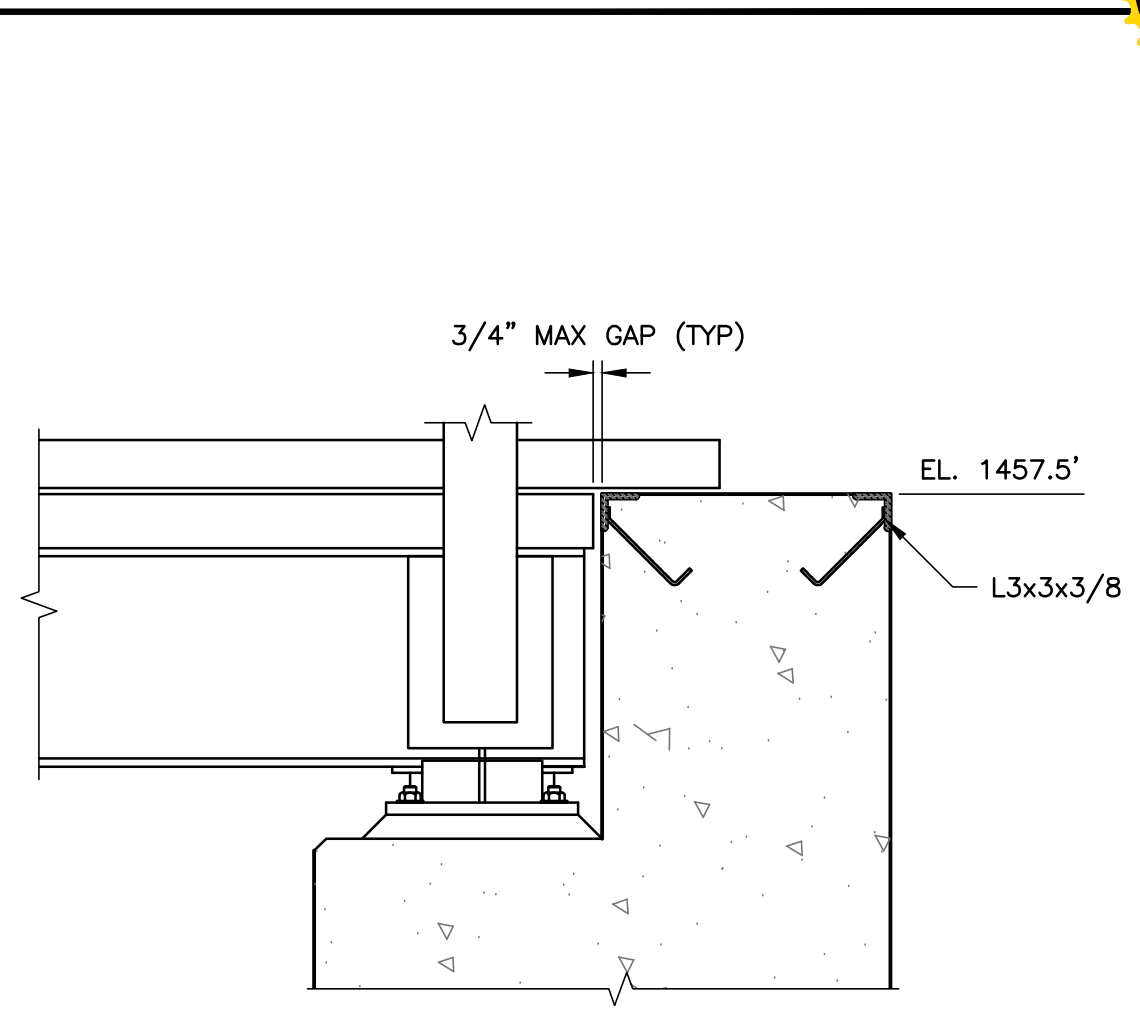
GRATING PLAN EL. 1457.5'  
1/4"= 1'-0"  
GRATING:  
W-19-4 4 1/2"x3/8" SERRATED BEARING BARS



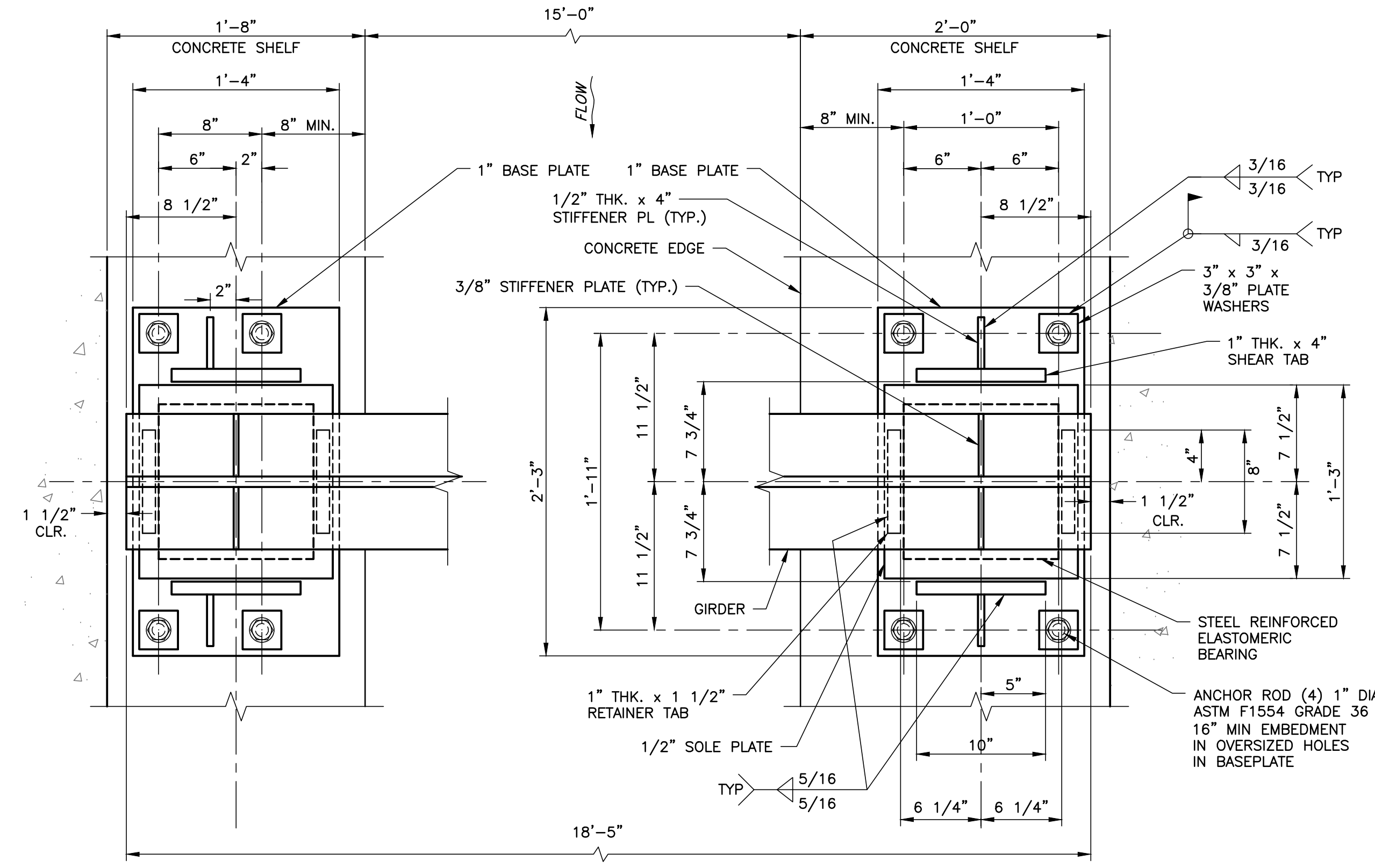
FRAMING PLAN AT EL. 1457.125'  
1/4"= 1'-0"



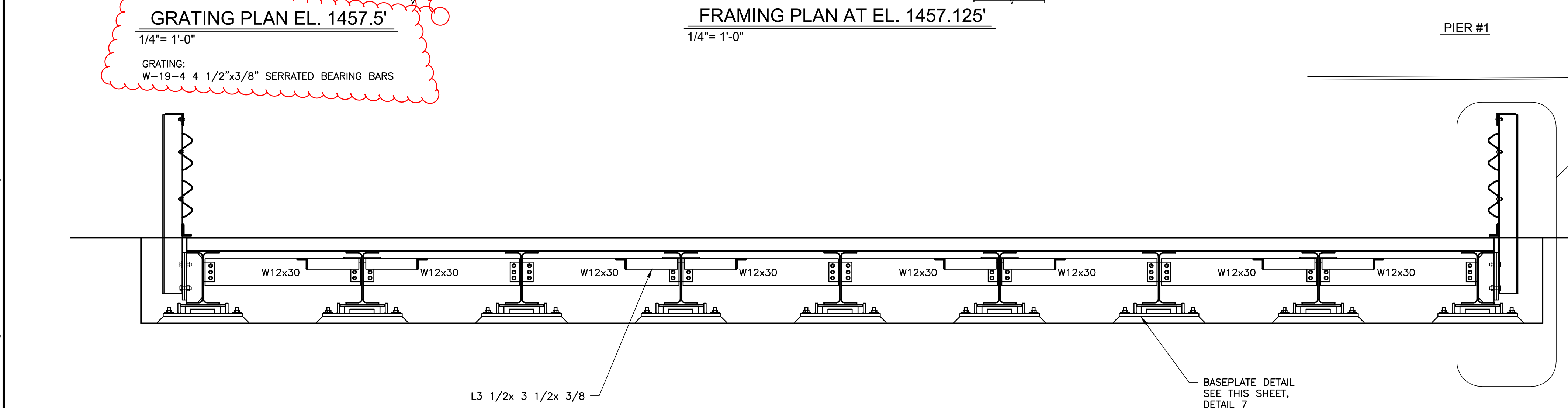
ELEVATION LOOKING UPSTREAM  
1/2"= 1'-0"



DETAIL 6  
3/4"= 1'-0"



DETAIL 7  
1 1/2"= 1'-0"



SECTION B  
1/2"= 1'-0"



A	ISSUED FOR BID	10-29-18	TLT	KJC
No.	Revision	Date	Drawn	Checked
			EMT	TLT
			TLT	KJC

NOT FOR CONSTRUCTION

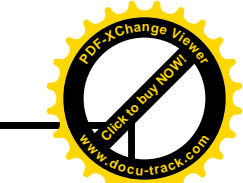
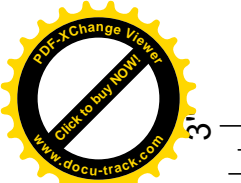
BROOKFIELD RENEWABLE  
LEWISTON, ME

MIDDLE DAM  
RENEWAL PROJECT

GATEHOUSE ACCESS BRIDGE  
DETAILS

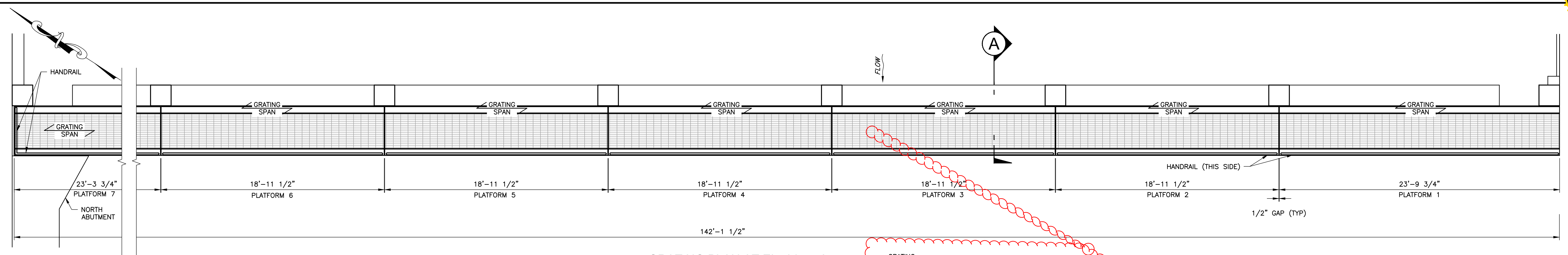
**Kleinschmidt**  
888-224-5942  
KleinschmidtGroup.com

Project No. 3758023  
Date Revised 10-29-18  
Drawing No. 696-350-04



24x36 = FULL SCALE

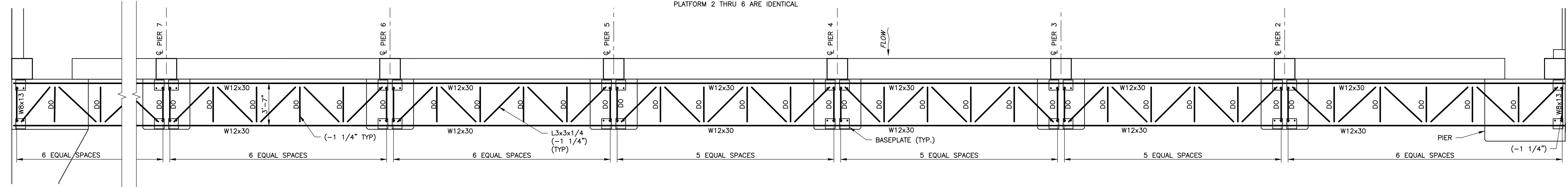
PRINTED: Oct 29, 2018 - 5:19 PM J:\3758023\Drawings\CAD\3758023 360-SERIES.dwg



GRATING PLAN AT EL. 1457.5'

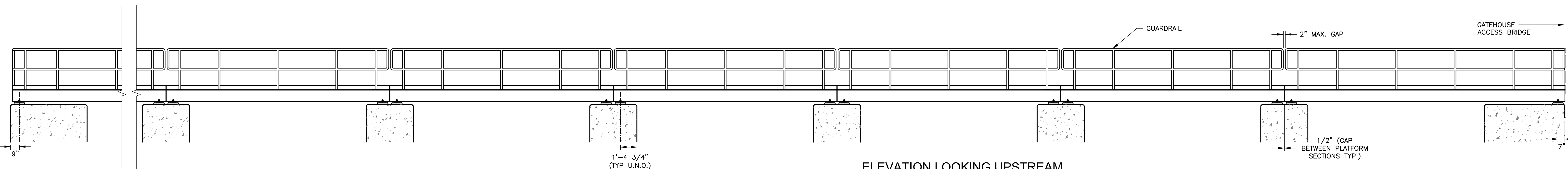
1/4" = 1'-0"  
NOTE:  
PLATFORM 2 THRU 6 ARE IDENTICAL

GRATING:  
W-19-4 1 1/2"x3/16" GALVANIZED SERRATED GRATING



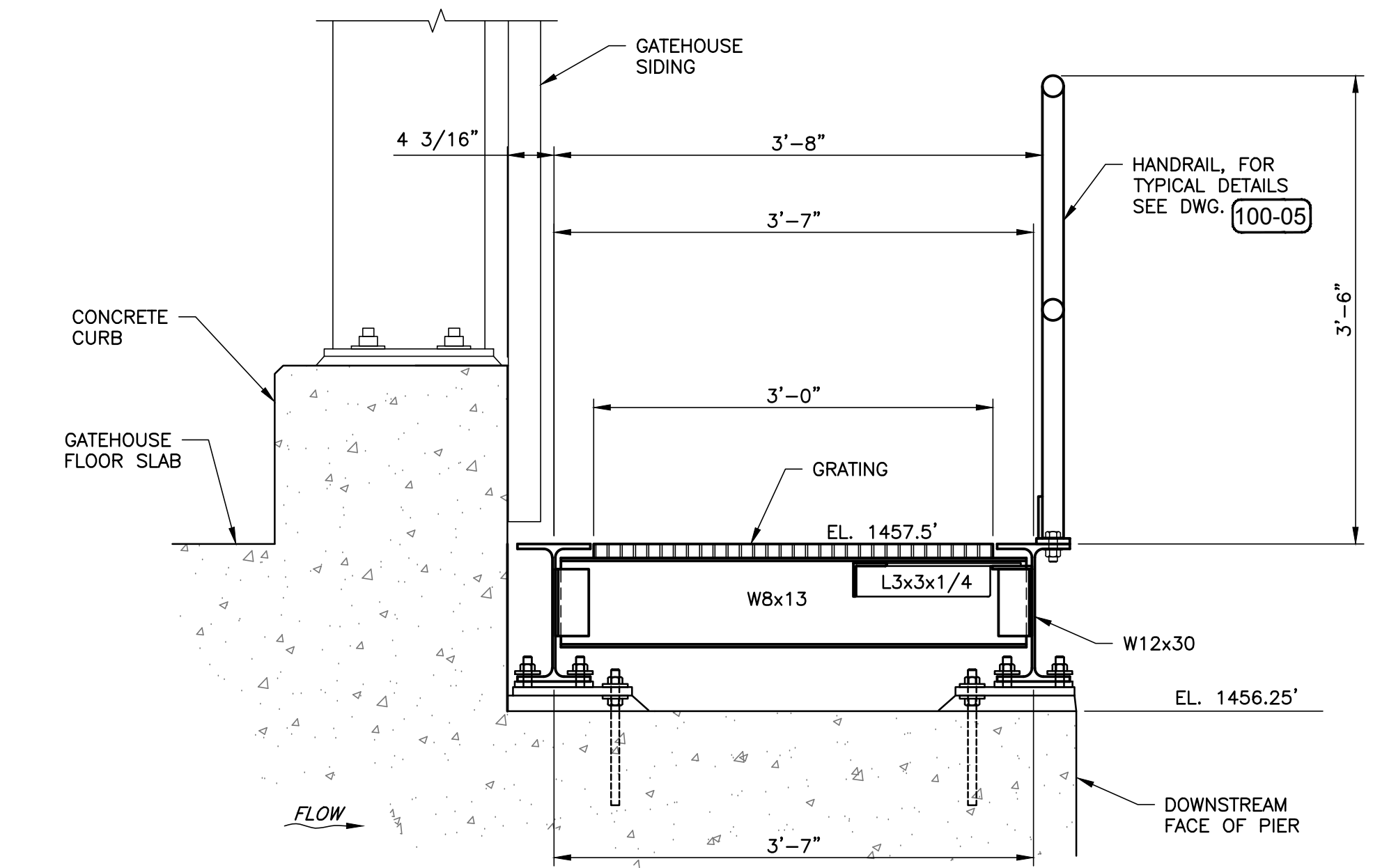
FRAMING PLAN T.O.S. 1457.5'

1/4" = 1'-0"



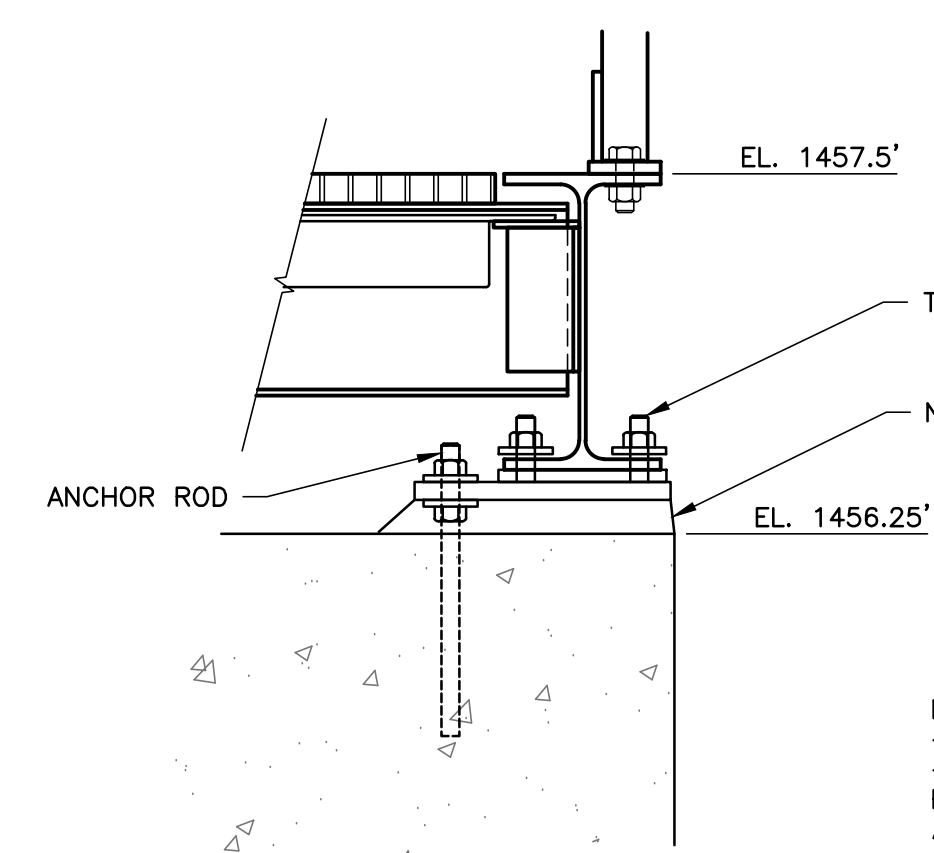
ELEVATION LOOKING UPSTREAM

1/4" = 1'-0"



SECTION A

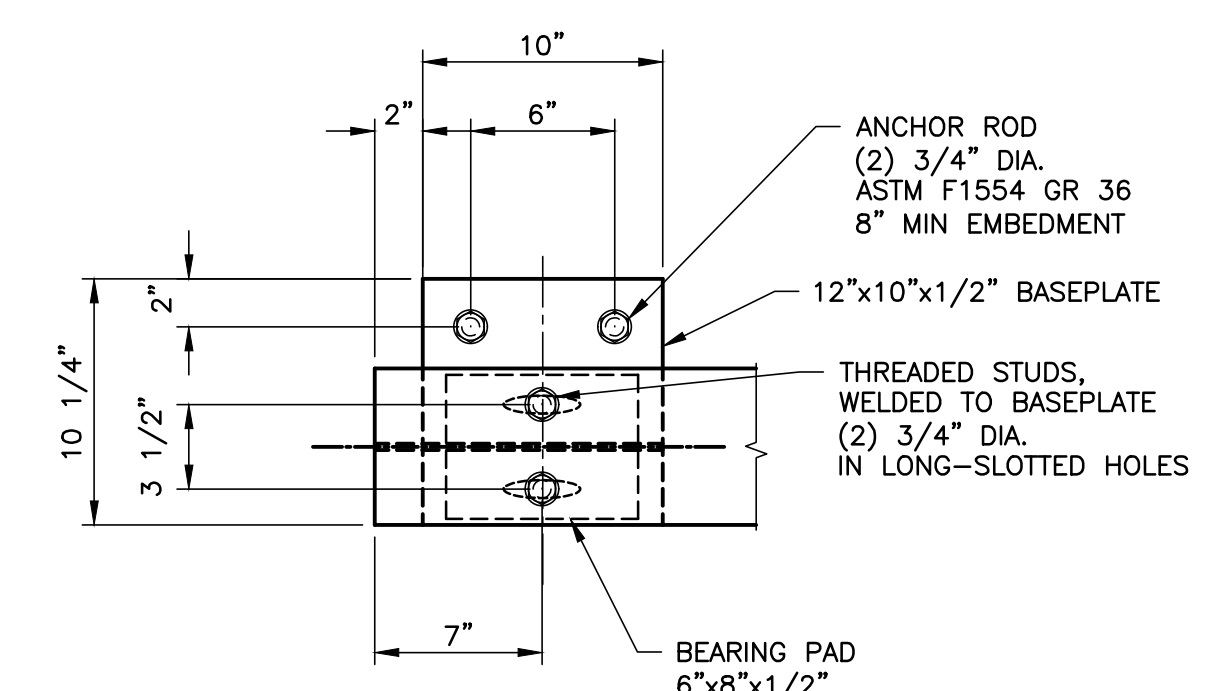
1" = 1'-0"



NOTES:  
-ALL PLATES ASTM A36  
-WILSON SLEEVES OR SIMILAR ARE  
RECOMMENDED TO ALLOW ANCHOR ROD  
ALIGNMENT ADJUSTMENTS, IN ADDITION TO  
OVERSIZE HOLES IN BASEPLATES.

BASEPLATE DETAILS

1 1/2" = 1'-0"



A	ISSUED FOR BID	10-29-18	TLT	KJC
No.	Revision	Date	Drawn	Checked
			EMT	TLT
			Checked	KJC

NOT FOR CONSTRUCTION

BROOKFIELD RENEWABLE  
LEWISTON, ME

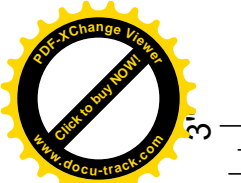
MIDDLE DAM  
RENEWAL PROJECT

DOWNSTREAM ACCESS WALKWAY

**Kleinschmidt**  
888-224-5942  
KleinschmidtGroup.com

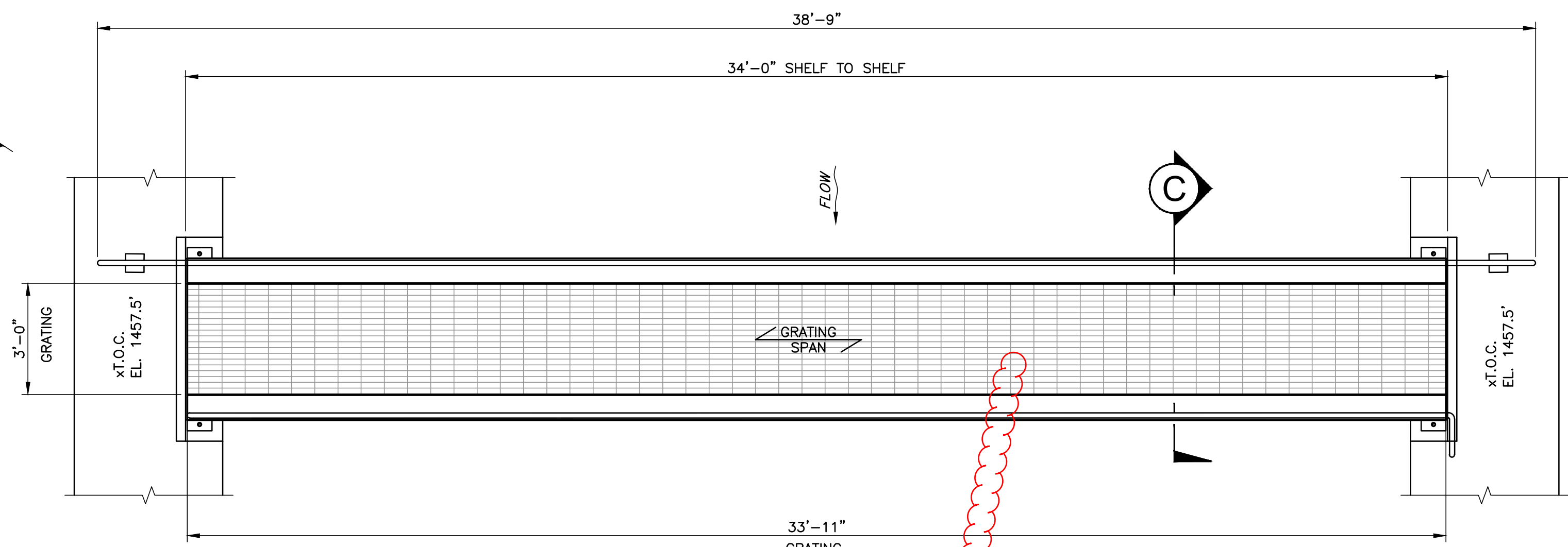
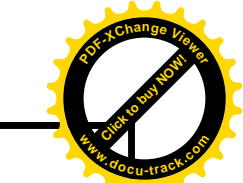
Project No. 3758023  
Date Revised 10-29-18  
Drawing No. 696-360-01





24x36 = FULL SCALE

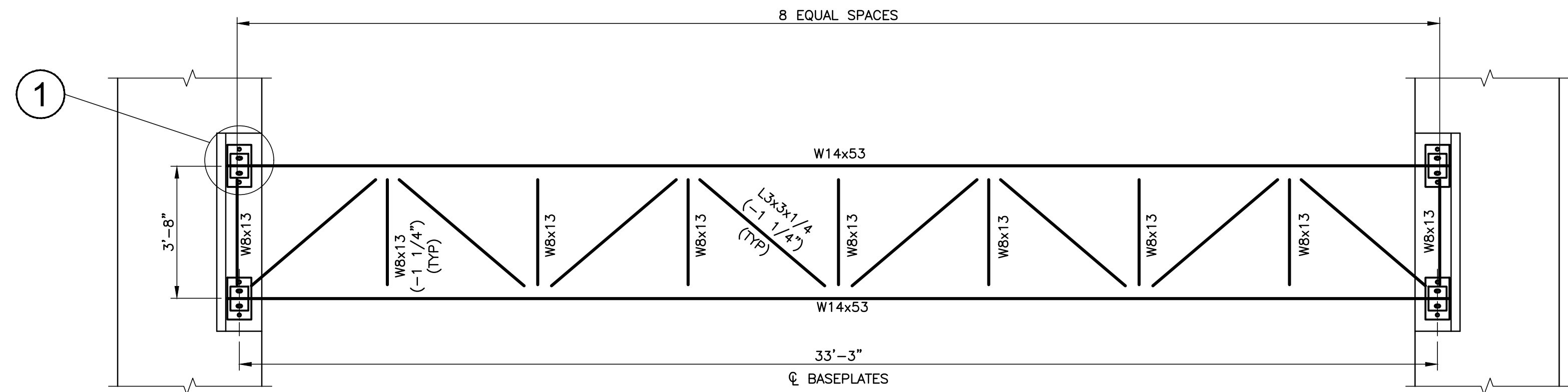
Oct 29, 2018 - 5:19 PM J:\3758023\Drawings\CAD\3758023 360-SERIES.dwg



GRATING PLAN EL. 1457.5'

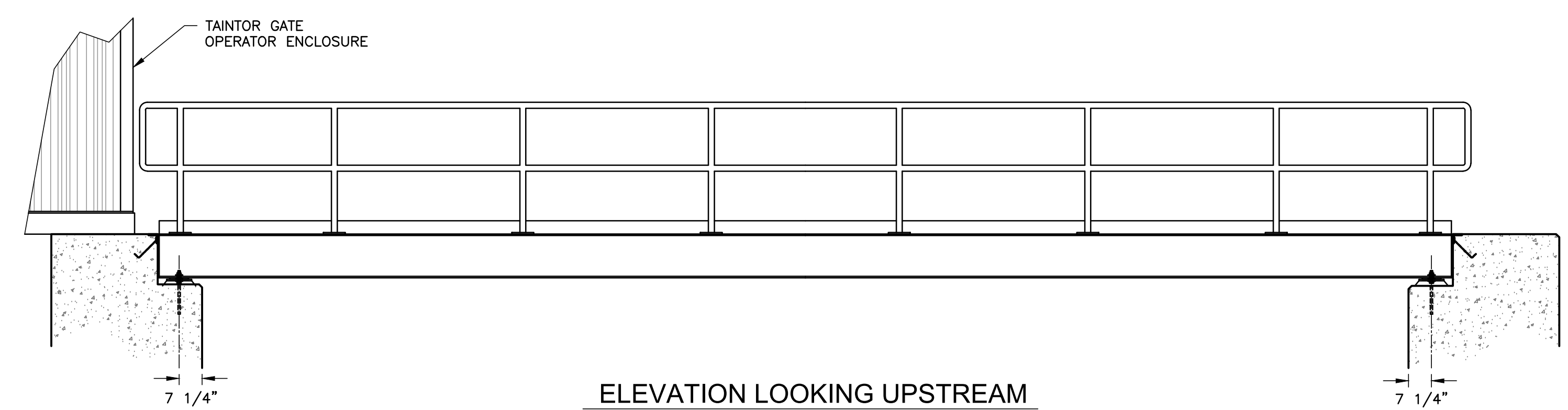
3/8"= 1'-0"

GRATING:  
W-19-4 1 1/2"x3/16" GALVANIZED SERRATED GRATING



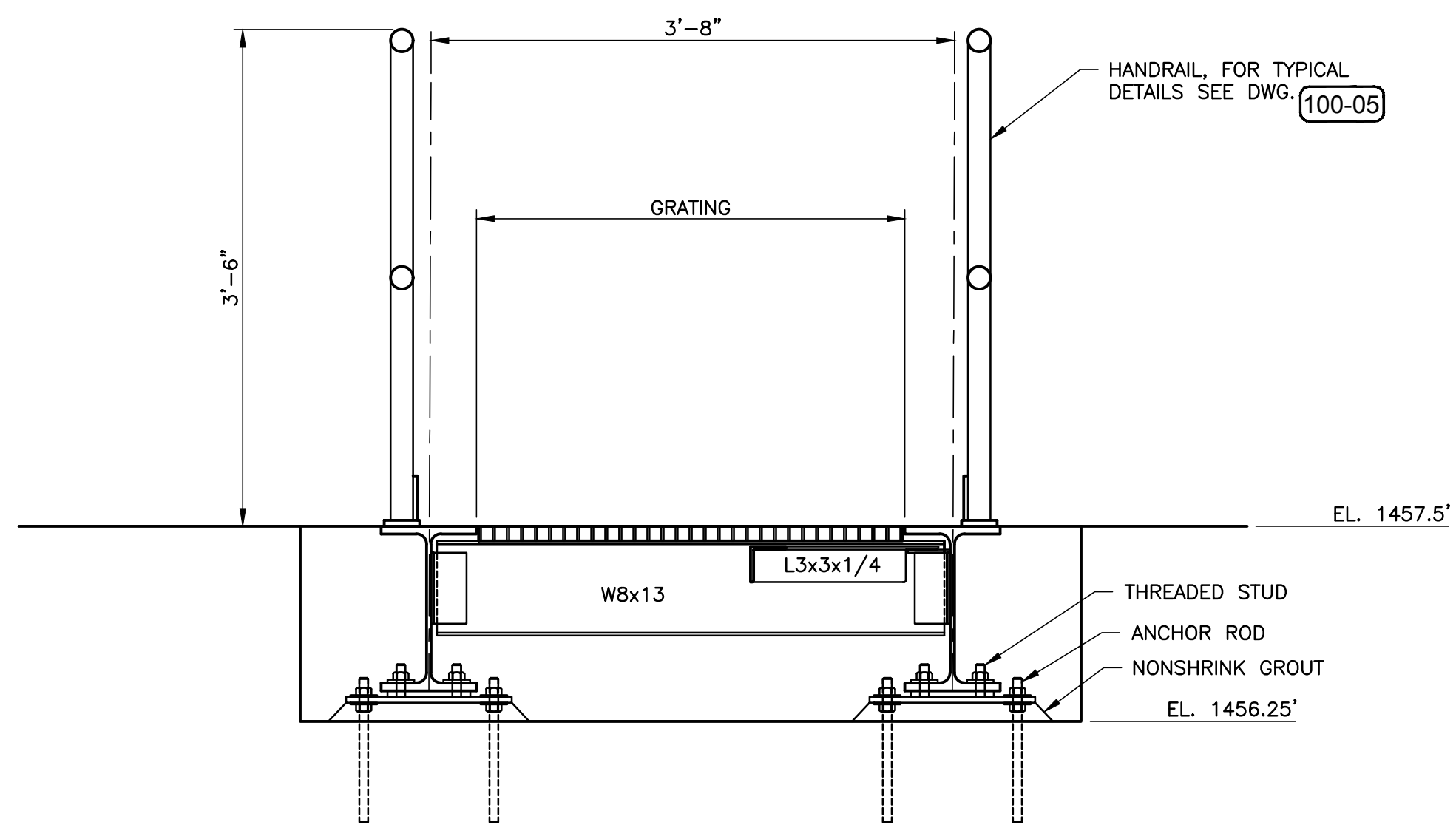
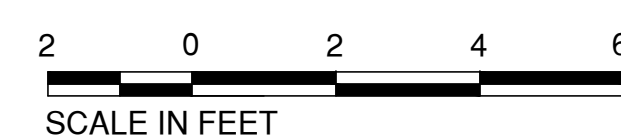
FRAMING PLAN EL. 1457.5'

3/8"= 1'-0"



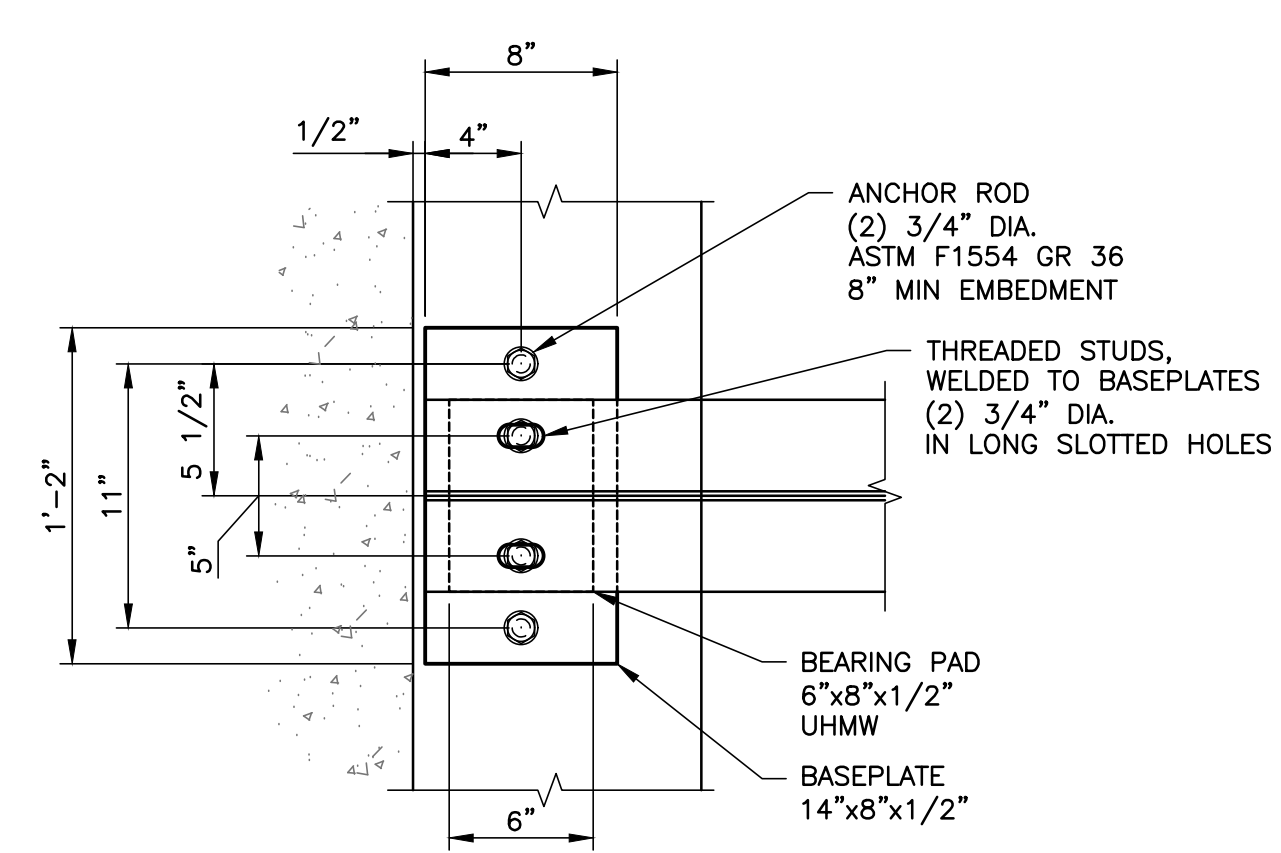
ELEVATION LOOKING UPSTREAM

3/8"= 1'-0"



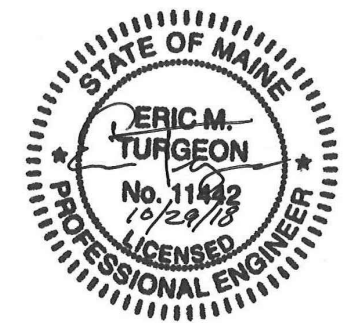
SECTION C

1"= 1'-0"

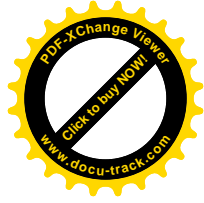
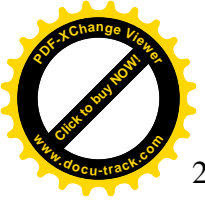


DETAIL 1

1 1/2"= 1'-0"



				NOT FOR CONSTRUCTION			
				BROOKFIELD RENEWABLE LEWISTON, ME			
				MIDDLE DAM RENEWAL PROJECT			
				TAINTER GATE ACCESS WALKWAY			
				<b>Kleinschmidt</b> 888-224-5942 KleinschmidtGroup.com			
A		ISSUED FOR BID	10-29-18	TLT	KJC	Designed	Drawn
No.		Revision	Date	Drawn	Checked	EMT	TLT
		THIS DOCUMENT IS A DRAFT VERSION PROVIDED FOR THE CONVENIENCE OF THE USER AND IS NOT AN INSTRUMENT OF SERVICE OF KLEINSMIDT GROUP UNLESS IT BEARS THE PROFESSIONAL ENGINEER'S SEAL AND ORIGINAL SIGNATURE. THIS DOCUMENT IS NOT A PRODUCT, AND TRANSFER OF A VERSION OF AN INSTRUMENT OF SERVICE OR SIGNATURE, WHEN USED BY USER, IS A FEE AND KLEINSMIDT GROUP'S EXPRESS WRITTEN PERMISSION OF KLEINSMIDT GROUP.		Project No.		Date Revised	Drawing No.
				3758023		10-29-18	696-360-02



## 2.4 COVER PLATES AND FRAMES

Fabricate cover plates of 1/4 inch thick rolled steel weighing not more than 100 pounds per plate with a selected raised pattern nonslip top surface. Provide shop painted plate. Provide structural steel shapes and plates for frames, securely fastened to the structure as indicated. Miter and weld all corners. Butt joint straight runs. Allow for expansion on straight runs over 15 feet. Provide holes for lifting tools. Provide holes and openings with 1/2 inch clearance for pipes and equipment. Remove sharp edges and burrs from cover plates and exposed edges of frames. Weld all connections and grind top surface smooth. Weld bar stops every six inches. Provide 1/8 inch clearance at edges and between cover plates.

## 2.5 EXPANSION JOINT COVERS

Provide expansion joint covers constructed of extruded aluminum with anodized satin aluminum finish for walls and ceilings and standard mill finish for floor covers and exterior covers. Furnish plates, backup angles, expansion filler strips and anchors as indicated

## 2.6 FLOOR GRATINGS

Steel grating in accordance with NAAMM MBG 531 and NAAMM MBG 532 for bar type gratings, or in accordance with manufacturer's charts for plank grating. Galvanize steel floor gratings.

In accordance with NAAMM MBG 531, band edges of grating with bars of the same size as the bearing bars. Weld banding in accordance with the manufacturer's standard for trim unless otherwise indicated. Design tops of bearing bars, cross or intermediate bars to be in the same plane and to match grating finish.

Anchor gratings to structural members with bolts, toggle bolts, or expansion shields and bolts.

Provide slip resistant surface finishes.

## 2.7 BOLLARDS/PIPE GUARDS

Provide 6 inch standard weight steel pipe in accordance with ASTM A53/A53M. Anchor posts in concrete and fill solidly with concrete. Paint in accordance with Section 09 00 00 Paints and Coatings, color: safety yellow.