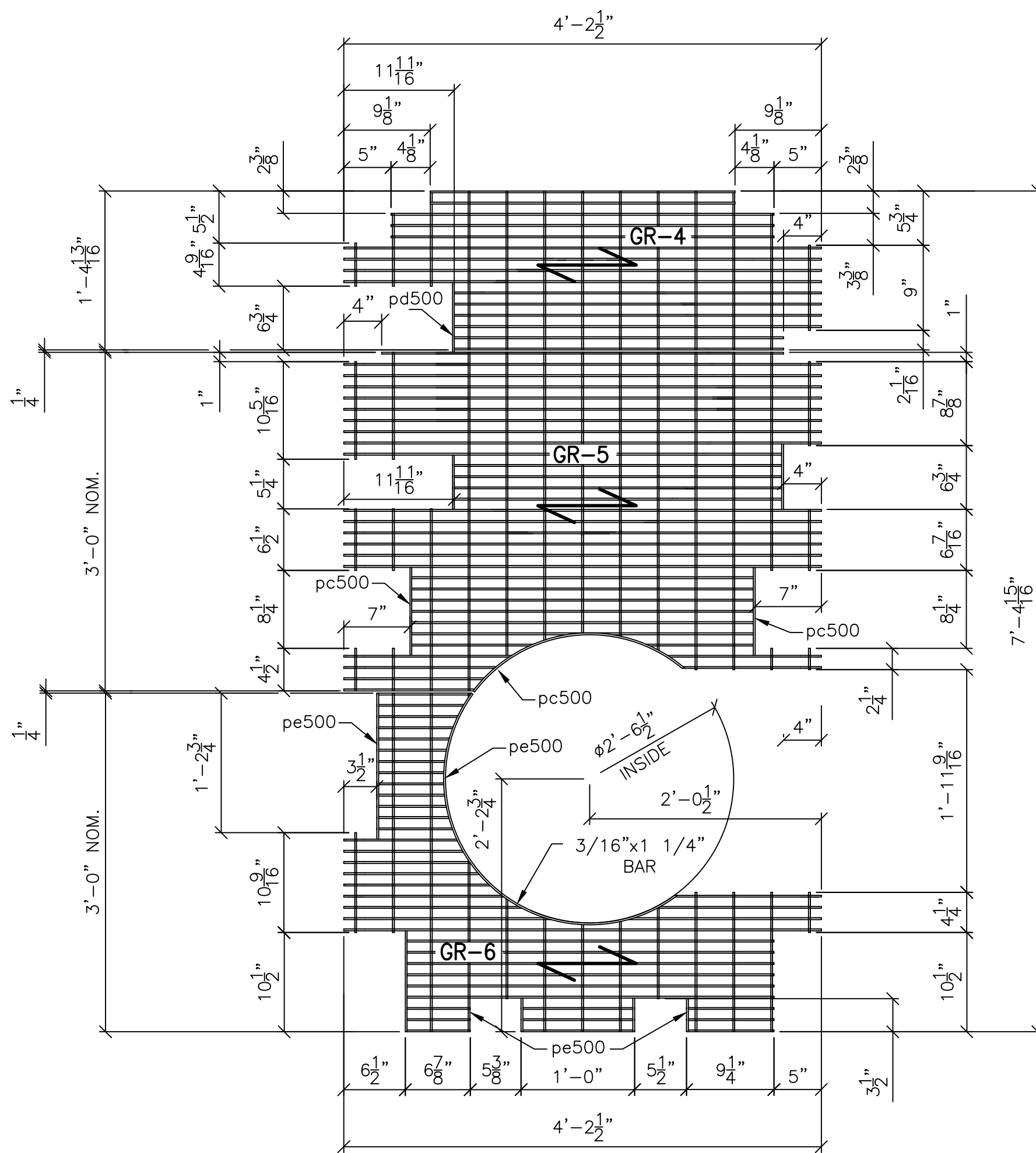
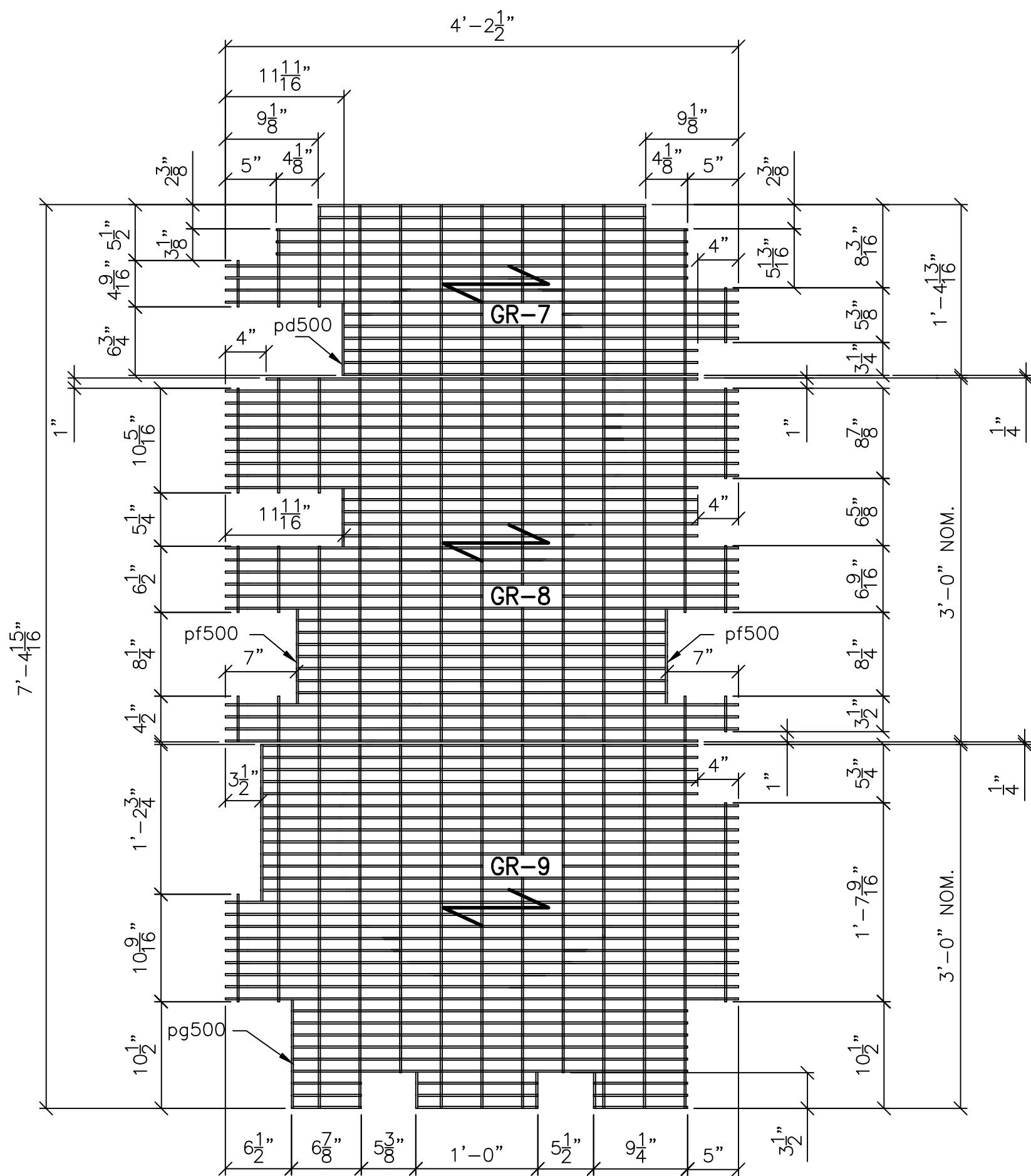


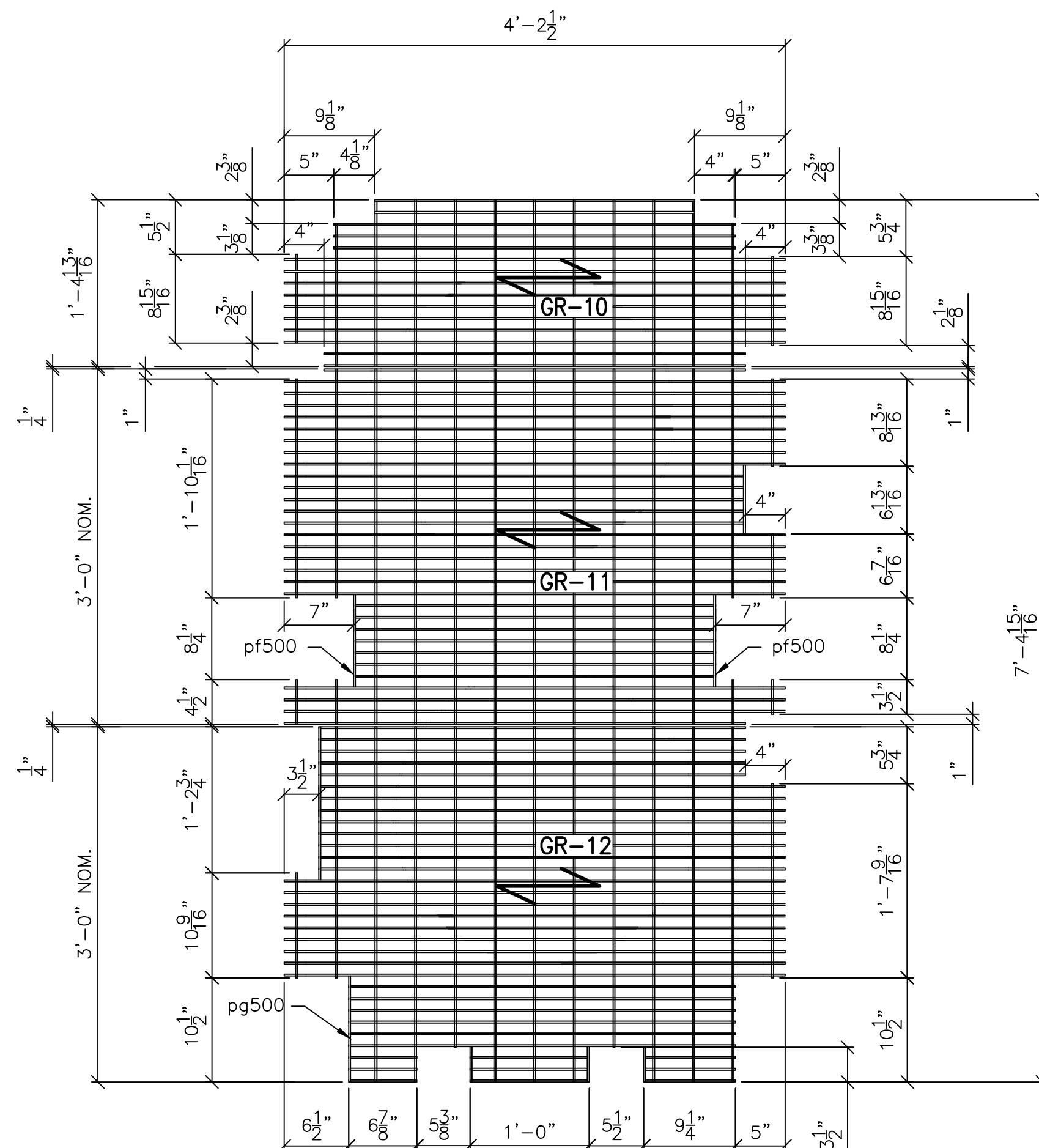
1 F.S. FLOOR GRATING DETAIL
FAR SIDE LADDER ELEVATION-TYP. (18)-PLCS.



2 N.S. FLOOR GRATING DETAIL
NEAR SIDE LADDER ELEVATION-TYP. (18)-PLCS.



3 F.S. FLOOR GRATING W/O OPENING DETAIL
FAR SIDE LADDER ELEVATION @ LEVEL 253



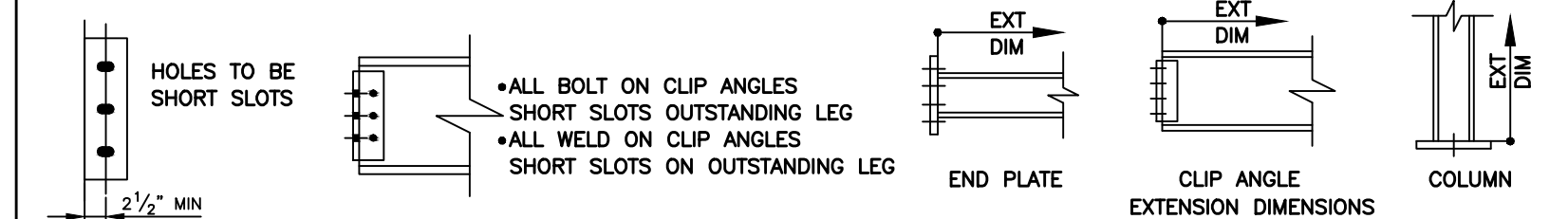
5 ROOF FLOOR GRATING DETAIL
LEVEL 216

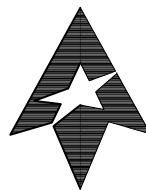

GENERAL NOTES:

- ALL GRATING SHALL BE HOT DIP GALVANIZED.
- NOTCHED OUT AREAS TO BE FINISHED WITH 3/16"x1 1/4" BAR BY WELDING.
- ALL GRATING TO HAVE A SERRATED SURFACE.
- ALL GRATING TO BE 3/16"x1 1/4" BAR @ 1 3/16" SPACING & CROS BARS @ 4".

BILL OF MATERIAL

LINE	SHIP SEQ.	SHIP MARK	SHOP MARK	QUAN	SHAPE	DESCRIPTION	LENGTH		WT. (#)	REMARKS
							FT	IN's		
1		GR-1		18	GR	1-1/4by3/16 x 16 ¹³ / ₁₆	4	2 1/2		SERRATED/G.A.F.
2			pa500	18	FB	3/16 x 1 1/4	2	6		LIN. FT.
3										
4										
5		GR-2		18	GR	1-1/4by3/16 x 36	4	2 1/2		SERRATED/G.A.F.
6			pb500	18	FB	3/16 x 1 1/4	5	2		LIN. FT.
7										
8										
9		GR-3		18	GR	1-1/4by3/16 x 36	4	2 1/2		SERRATED/G.A.F.
10			pc500	18	FB	3/16 x 1 1/4	4	0		LIN. FT.
11										
12										
13		GR-4		18	GR	1-1/4by3/16 x 16 ¹³ / ₁₆	4	2 1/2		SERRATED/G.A.F.
14			pd500	18	FB	3/16 x 1 1/4	1	0		LIN. FT.
15										
16										
17		GR-5		18	GR	1-1/4by3/16 x 36	4	2 1/2		SERRATED/G.A.F.
18			pc500	18	FB	3/16 x 1 1/4	4	0		LIN. FT.
19										
20										
21		GR-6		18	GR	1-1/4by3/16 x 36	4	2 1/2		SERRATED/G.A.F.
22			pe500	18	FB	3/16 x 1 1/4	7	0		LIN. FT.
23										
24										
25		GR-7		1	GR	1-1/4by3/16 x 16 ¹³ / ₁₆	4	2 1/2		SERRATED/G.A.F.
26			pd500	1	FB	3/16 x 1 1/4	1	0		LIN. FT.
27										
28		GR-8		1	GR	1-1/4by3/16 x 36	4	2 1/2		SERRATED/G.A.F.
29			pf500	1	FB	3/16 x 1 1/4	2	6		LIN. FT.
30										
31										
32		GR-9		1	GR	1-1/4by3/16 x 36	4	2 1/2		SERRATED/G.A.F.
33			pg500	1	FB	3/16 x 1 1/4	3	6		LIN. FT.
34										
35										
36		GR-10		1	GR	1-1/4by3/16 x 16 ¹³ / ₁₆	4	2 1/2		SERRATED/G.A.F.
37										
38										
39		GR-11		1	GR	1-1/4by3/16 x 36	4	2 1/2		SERRATED/G.A.F.
40			pf500	1	FB	3/16 x 1 1/4	2	6		LIN. FT.
41										
42										
43		GR-12		1	GR	1-1/4by3/16 x 36	4	2 1/2		SERRATED/G.A.F.
44			pg500	1	FB	3/16 x 1 1/4	3	6		LIN. FT.
45										



GENERAL NOTES				REF. DRAWINGS:					
W SHAPES: A992-50 U.N.O.				REVISION					
TUBES: A500-B U.N.O.				REV	DATE	DESCRIPTION			
PIPE: A53-B U.N.O.				A	7/24/15	ISSUED FOR APPROVAL			
STRUCT. STEEL: A36 U.N.O.				0	8/25/15	ISSUED FOR FABRICATION			
WELD PROCESSES: GMAW U.N.O.									
ELECTRODES: ER70S-6 U.N.O.									
SURFACE PREP: SSPC SP-2 (HAND TOOL) U.N.O.									
SHOP PAINT: GALV. AFTER FABRICATION									
HOLES:				PLACE ALL MARKS ON THE LEFT END OF THE PIECE AS					
BOLT CONN:				DETAILED WHETHER THUS OR REVERSE.					
NO BACK CHARGES ACCEPTED WITHOUT WRITTEN APPROVAL									
THESE DRAWINGS HAVE BEEN PREPARED IN ACCORDANCE WITH THE AISC CODE OF STANDARD PRACTICE.									
 TrueNorth Steel				RAPID CITY OFFICE 3272 LIEN STREET RAPID CITY, SD PHONE (605)-394-7200 FAX (605)-394-7224					
									
DESCRIPTION GRATING FOR LEVEL 3500 THRU 4100									
JOB NAME ROSS SHAFT PHASE 3				CONTR. SD Science & Technology Authority					
JOB SITE LEAD, SD				ARCH.					
DR. NCS		REC'D 8/4/15		IN SHOP		SEQ	SHEET NO.	JOB NUMBER	REV.
CK. AAQ				8/25/15			500	PRC39a	0

FINAL DRAWINGS
FOR SHOP & FIELD USE