

TYPICAL NOTES:
1. ALL MEASUREMENTS TO BE FIELD
VERIFIED BEFORE FABRICATION

NOTICE TO CONTRACTOR
AND ERECTOR
MAKE CHANGES FOR CORRECTING
MISTAKES OR REPLACEMENT PARTS
UNLESS AUTHORIZED BY TATE
ORNAMENTAL, INC. BEFORE SUCH
CHANGES ARE MADE. THESE SHOULD
BE IN WRITING AND SIGNED BY TATE
ORNAMENTAL, INC. ENGINEERS.
DO NOT SCALE DRAWINGS.

PRINT RECORD
FOR APPROVAL
02/16/16

DATE APPROVED

FILE & FIELD

REVISIONS

BY

DESCRIPTION

NO. DATE

TATE ORNAMENTAL, INC.
411 INDUSTRIAL DRIVE
WHITE HOUSE, TENNESSEE 37188
(615) 672-0348 FAX (615) 672-2437
E-MAIL: TATE@TATEORNAMENTAL.COM



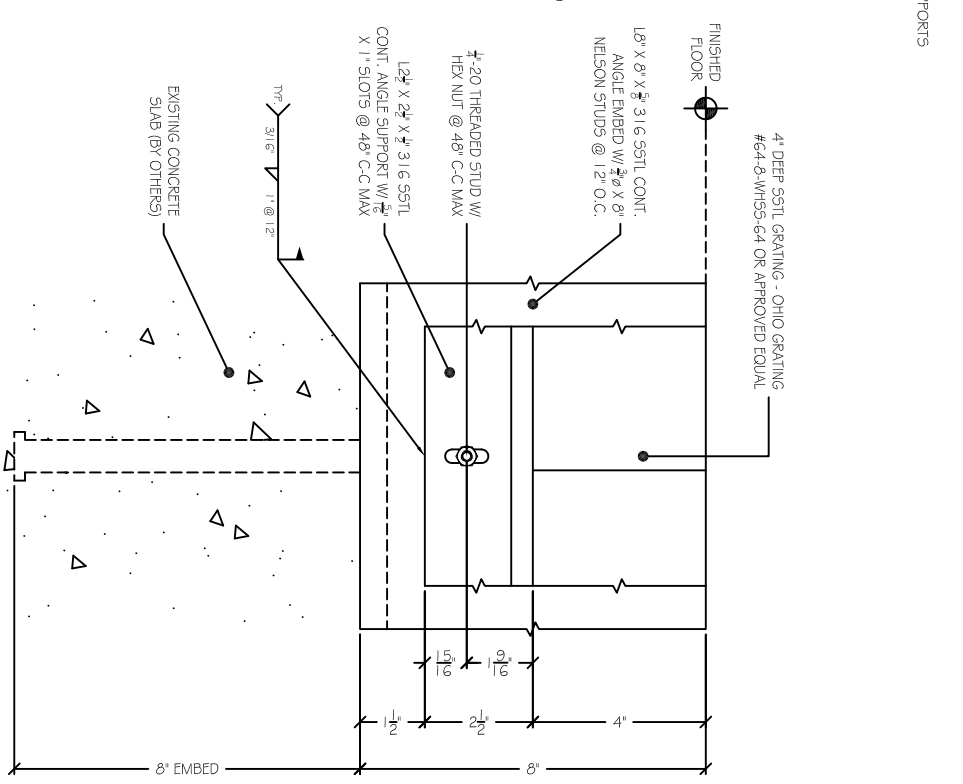
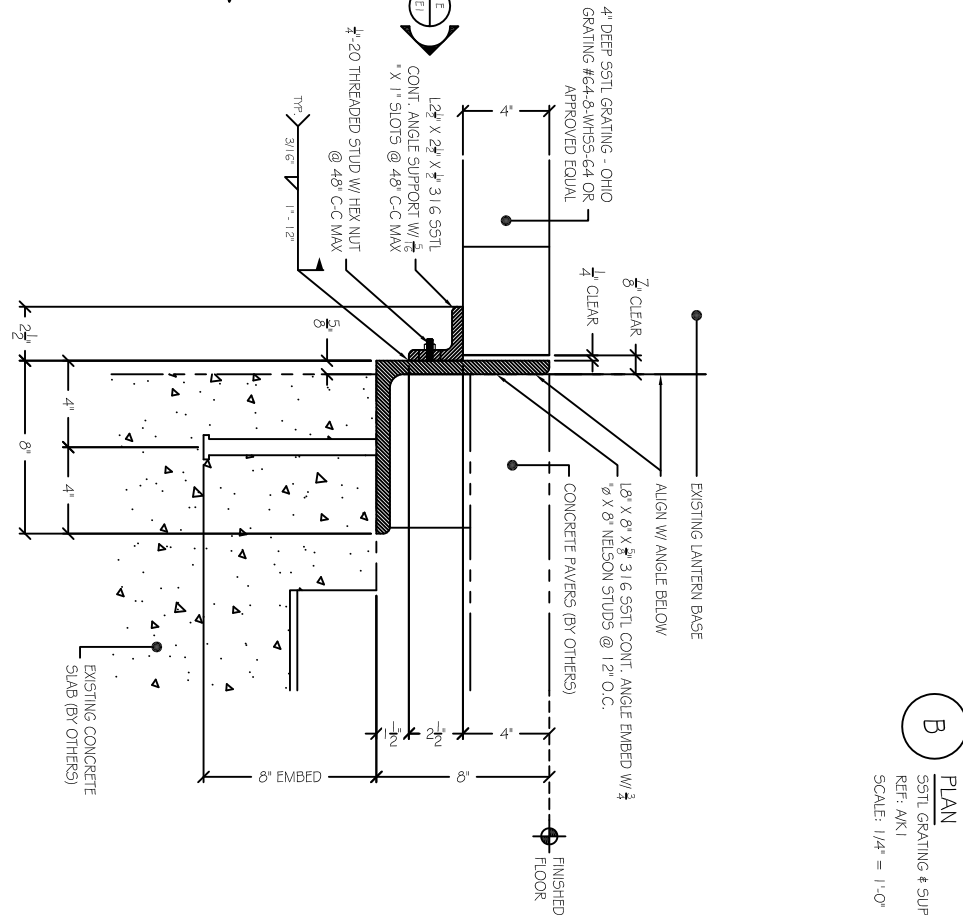
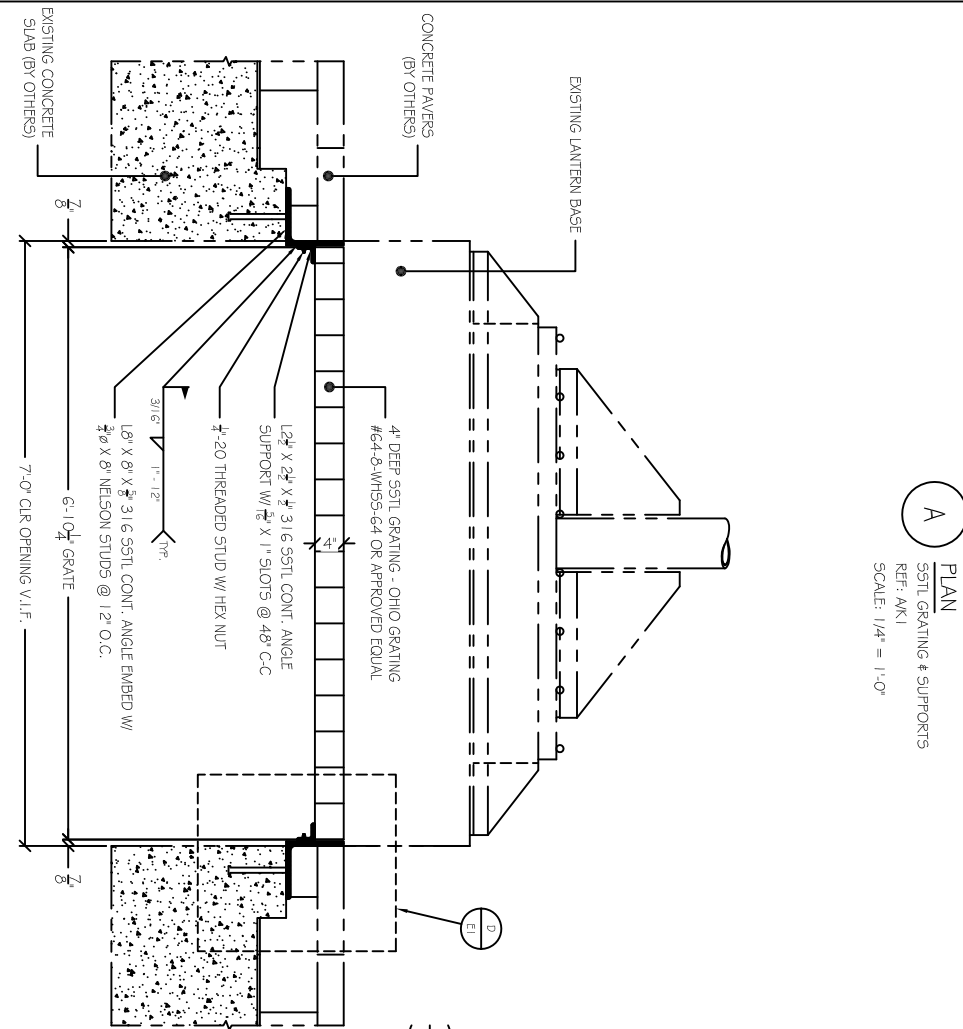
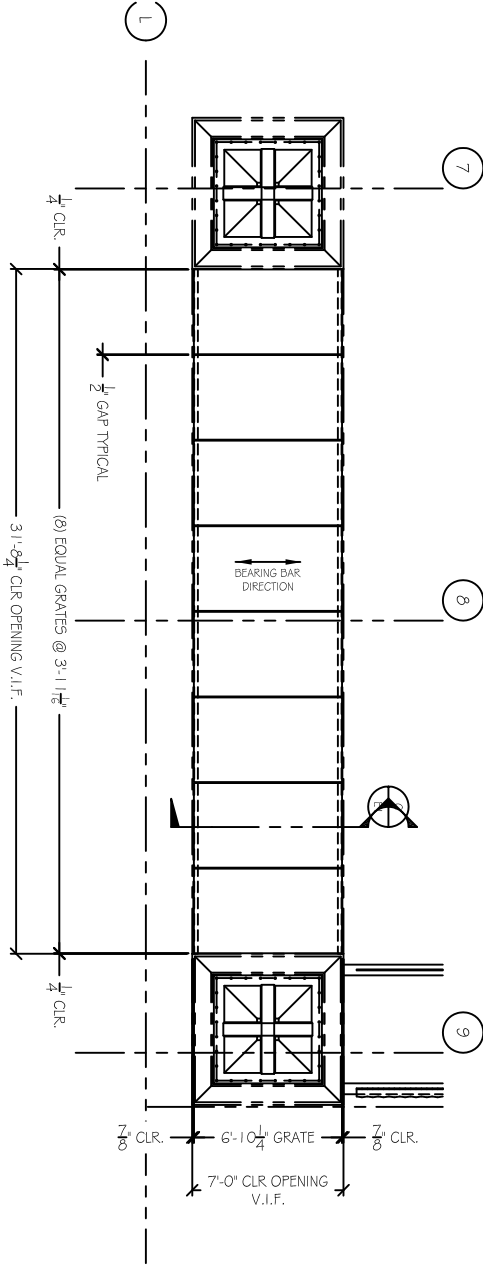
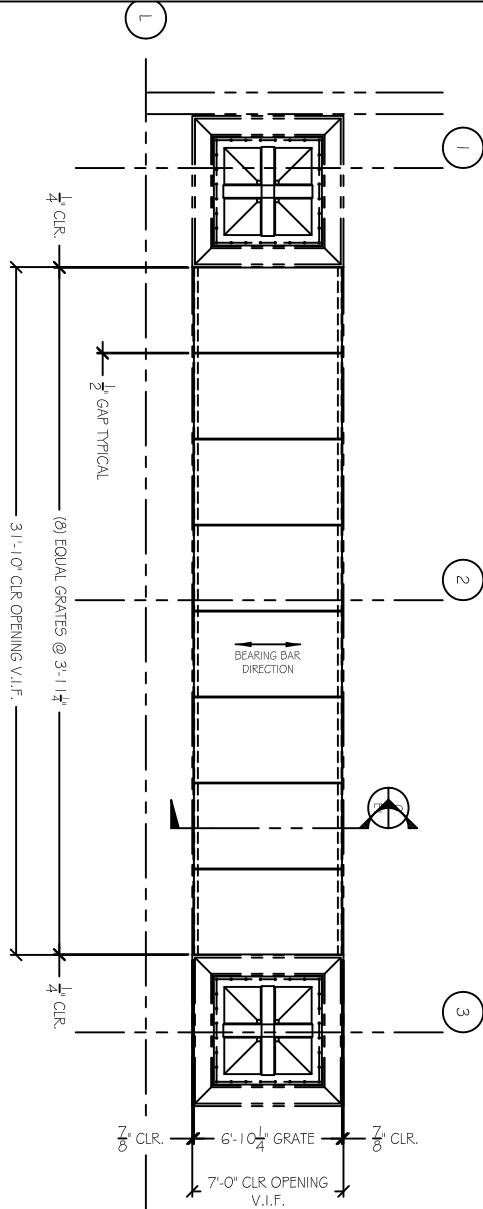
SCALE:
AS NOTED

DATE: 02/10/16
DATE:

DRAWN BY: 77LC
CHECKED BY:

PROJECT: FIFTH THIRD PLAZA
LOCATION: NASHVILLE, TN
CONTRACTOR: THE PARENT COMPANY
DRAWING TITLE: SS1L GRATING & SUPPORTS

FILE: 34-101-00-00-0
JOB NO.: 341
REV.: 0
SHEET: E1



PART 1 - GENERAL

1.1 SUMMARY

- A. Section Includes:
 - 1. Metal bar gratings.

1.2 ACTION SUBMITTALS

- A. Product Data:
 - 1. Gratings and anchorage devices.
- B. Shop Drawings: Include plans, sections, details, and attachments to other work.

1.3 QUALITY ASSURANCE

- A. Welding Qualifications: Qualify procedures and personnel according to the following:
 - 1. AWS D1.6/D1.6M, "Structural Welding Code - Stainless Steel."

1.4 FIELD CONDITIONS

- A. Field Measurements: Measure in-place and existing construction as needed for fabrication and execution. No changes to Contract Sum or Contract Time will be allowed for differences between Drawing dimensions and field measurements.

PART 2 - PRODUCTS

2.1 MANUFACTURERS

- A. Basis-of-Design Product: Ohio Gratings 64-8-WHSS-64, 3/16" Wheels N' Heels Invent Grating with 4-inch overall depth, stainless steel 316 alloy with slip resistance surface, sandblasted and passivated finish, ADA compliant, 58% minimum open area, or approved equal.

2.2 FABRICATION

- A. Fabricate grating sections in shop with perimeter banding bars.
- B. Fabricate grating panels in single, full-width units with equal widths.
- C. Cut, drill, and punch material cleanly and accurately. Remove burrs and ease edges to a radius of approximately 1/32 inch unless otherwise indicated. Remove sharp or rough areas on exposed surfaces.
- D. Welding: Comply with AWS recommendations and the following.

1. Use materials and methods that minimize distortion and develop strength and corrosion resistance of base metals.
 2. Obtain fusion without undercut or overlap.
 3. Remove welding flux immediately.
- E. Provide anchoring devices to secure gratings, frames, and supports rigidly in place and to support indicated loads.

PART 3 - EXECUTION

3.1 INSTALLATION

- A. Set grating units in accurate alignment with uniform joint width between units.
- B. Install gratings on support frames with anchorage devices to prevent movement and unauthorized removal. Provide shims as needed to align with top of support frames and to prevent rocking when walked on.

END OF SECTION

©2015 Gresham, Smith and Partners. All rights reserved. Use subject to any written agreement with Gresham, Smith and Partners.

PREPARED BY:	SPL
CHECKED BY:	LCM

ISSUED	DATE
Construction Documents	11/4/2015