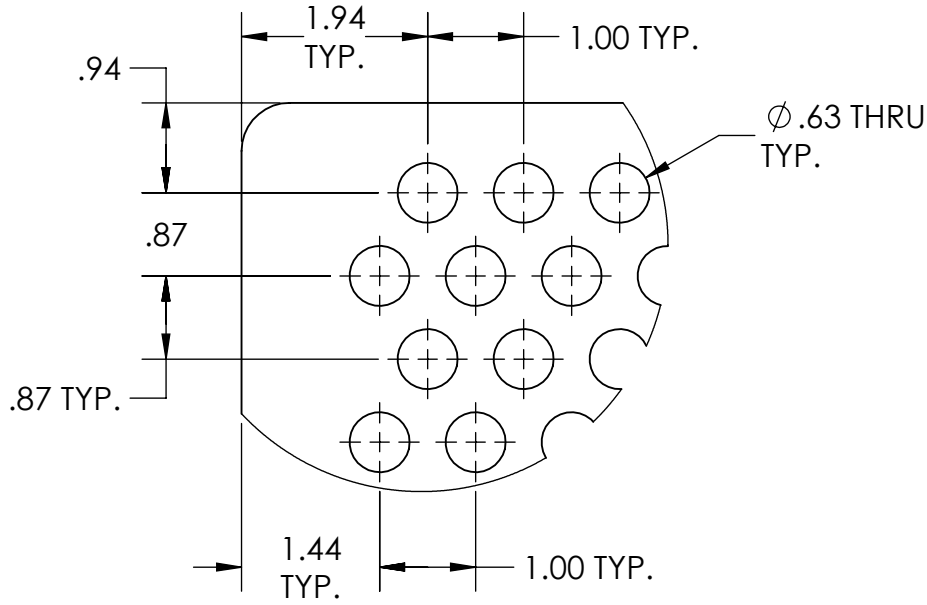
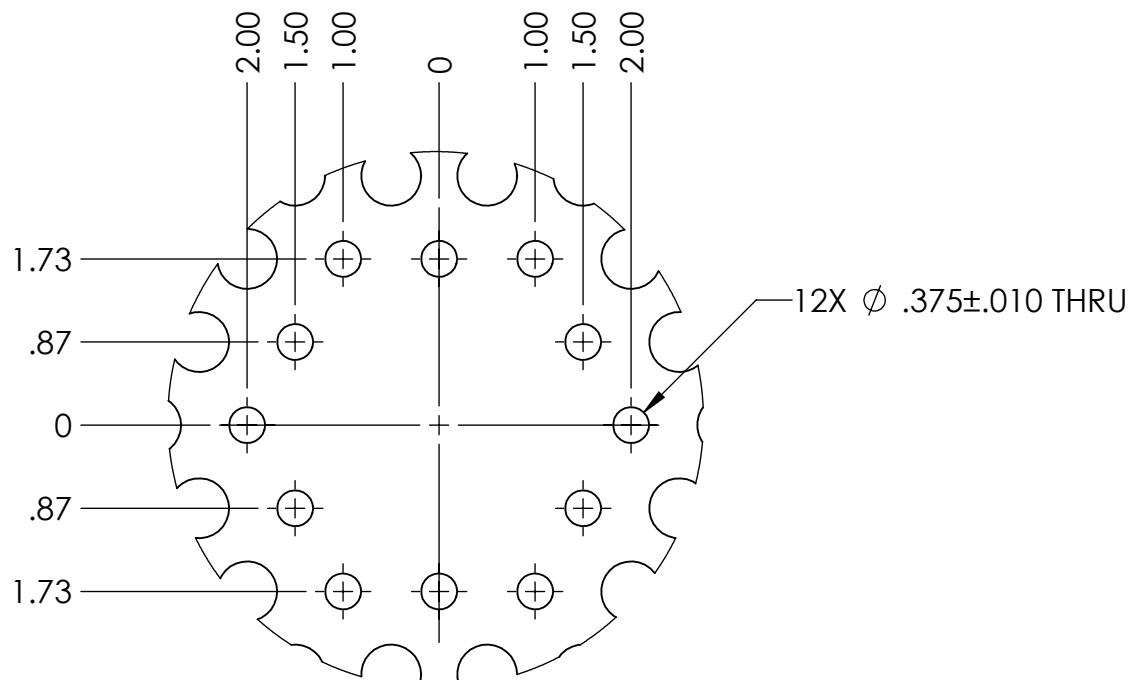


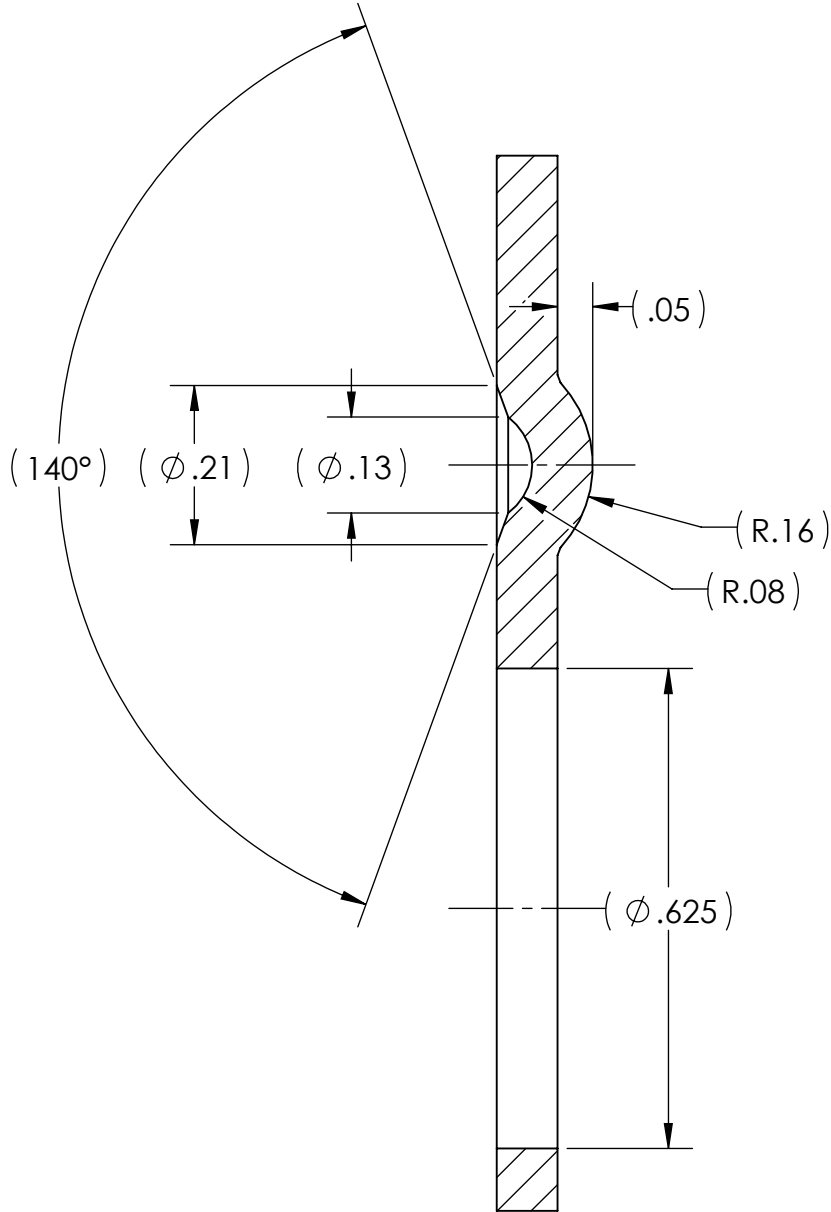
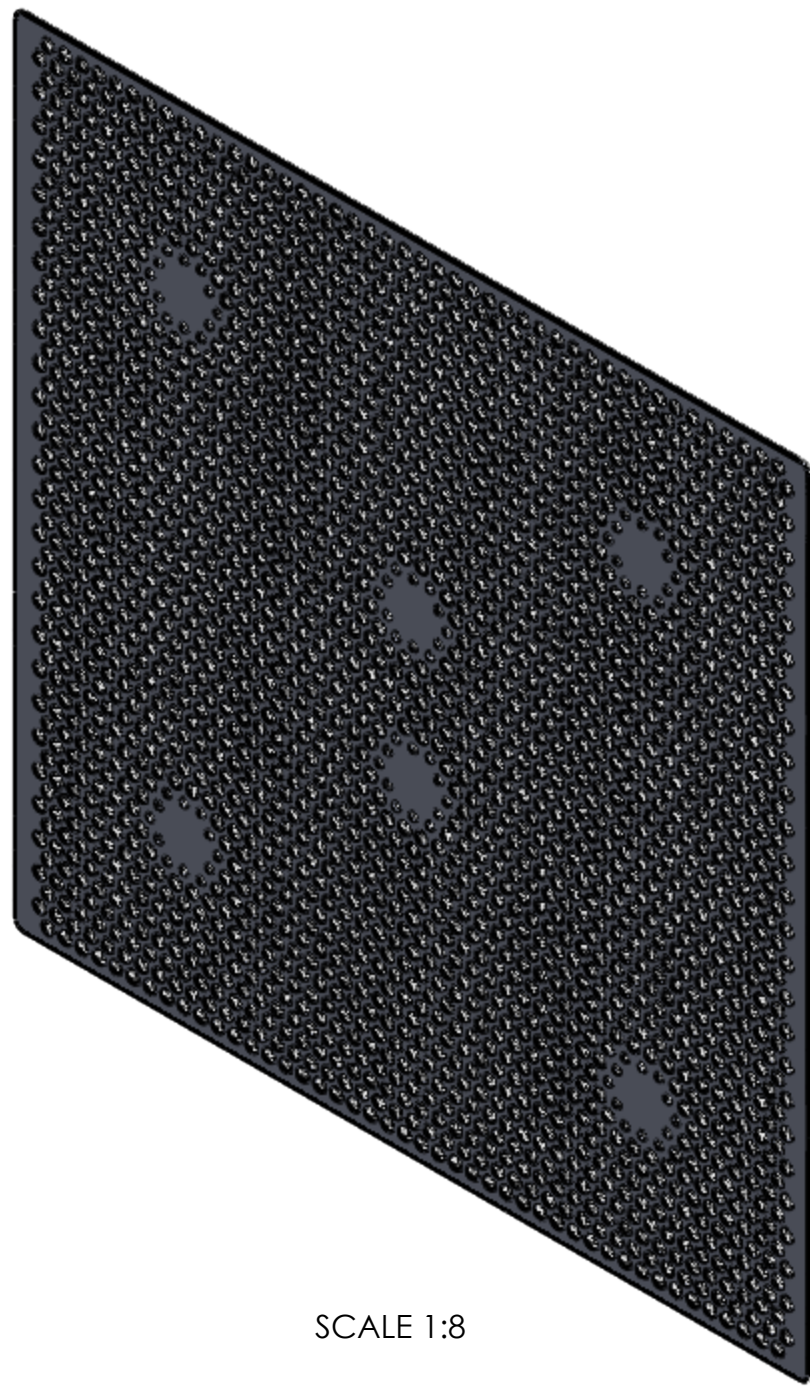
[2.0]  
.08 TYP.



DETAIL A  
SCALE 1 : 2




DETAIL B  
SCALE 1 : 2  
6 PLACES



SECTION C-C  
SCALE 4 : 1

- NOTES:
1. CRITICAL DIMENSIONS TO BE MEASURED WITH PROVIDED DATA. ☒ X
  2. REMOVE ALL BURRS AND SHARP EDGES UNLESS NOTED.
  3. ALL DIMENSIONS ARE FINISHED DIMENSIONS UNLESS OTHERWISE SPECIFIED.

APPROVED FOR BUILD

UNLESS OTHERWISE SPECIFIED:		NAME	DATE	 <b>GMS</b> 127 Industrial Avenue Coldwater, MI 49036 517-278-9339	
TOLERANCES IN INCHES (MM): FRACTIONAL: $\pm 1/32$ (0.794) ANGULAR: $\pm 1/2^\circ$ ONE PLACE DECIMAL: $\pm .031$ (0.787) TWO PLACE DECIMAL: $\pm .010$ (0.254) THREE PLACE DECIMAL: $\pm .005$ (0.127) FOUR PLACE DECIMAL: $\pm .0005$ (0.0127)		DRAWN: NHC	CHECKED: SALES APPR:		
SURFACE FINISH $R_a$ (µm): 32 (0.8) EXCEPTIONS: THREADS, DRILLED HOLES		RFQ NUMBER: 183513		SIZE <b>D</b>	SCALE: 1:4 SHEET: 1 of 1
DO NOT SCALE DRAWING		TITLE:		REV	
PROPRIETARY AND CONFIDENTIAL THE INFORMATION CONTAINED IN THIS DRAWING IS THE SOLE PROPERTY OF GMS. ANY REPRODUCTION IN PART OR AS A WHOLE WITHOUT THE WRITTEN PERMISSION OF GMS IS PROHIBITED.		CUSTOMER PART NO.		GMS DWG. NO. 687-183513-01	
INTERPRET GEOMETRIC TOLERANCING PER: ASME Y14.5-1994		MATERIAL: 3003 ALUM		HEAT TREAT: H14	
		FINISH: BRITE POLISH			