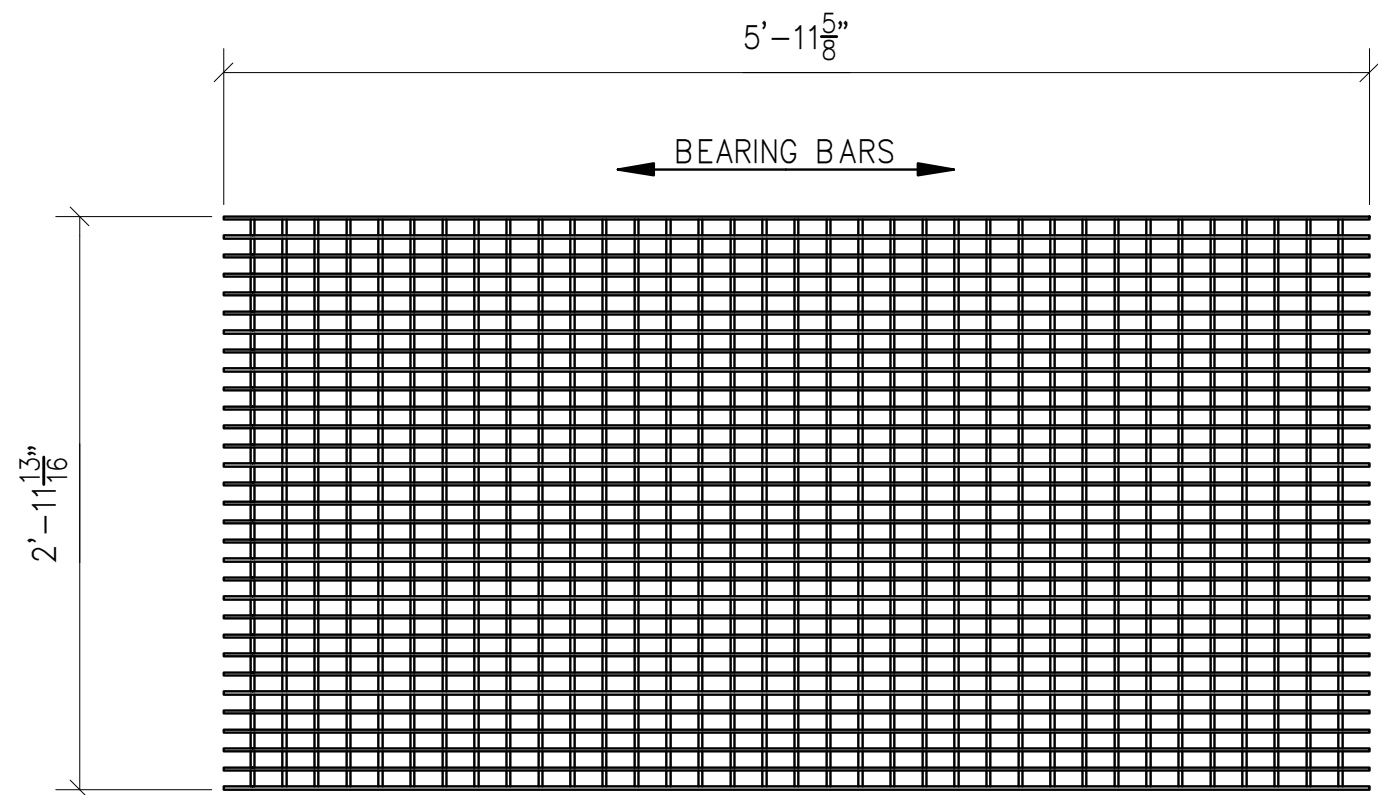
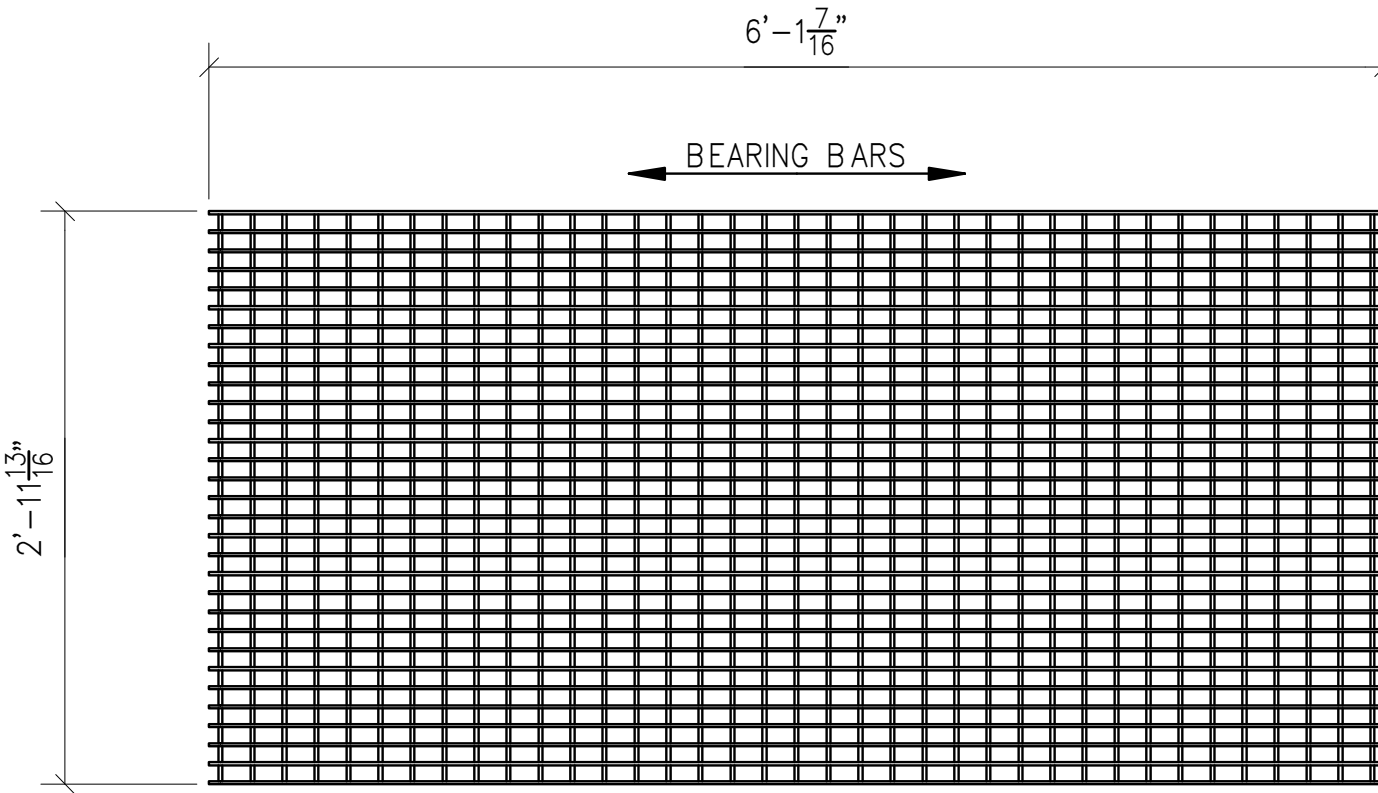


WALKWAY GRATING – 12GR1  
(2) REQ'D.



WALKWAY GRATING – 12GR2  
(8) REQ'D.



WALKWAY GRATING – 12GR3  
(4) REQ'D.

BILL OF MATERIAL							
MAIN PC MK	SUB PT No.	QTY	DESCRIPTION	LENGTH	MATERIAL	WT EA, LB	TOTAL, LB
12GR1		2	19-W-4 GRATING, 1 1/2" x 35 13/16"	6'-0 3/8"	C.S. GALV.	194.4	389
12GR2		8	19-W-4 GRATING, 1 1/2" x 35 13/16"	5'-11 5/8"	C.S. GALV.	191.7	1534
12GR3		4	19-W-4 GRATING, 1 1/2" x 35 13/16"	6'-1 7/16"	C.S. GALV.	197	788
12SC1		56	STD SADDLE CLIPS FOR 1 1/2" GRATING				
		56	W/ (1) 1/4" SELF TAPPING TEK SCREW EACH		S/S	0.5	28

ALL GRATINGS ARE 19-W-4 SERRATED.  
1 1/2" x 3/16" BEARING BARS AT 1 3/16" C/C  
WITH CROSS BARS AT 2" C/C

TOTAL WT: 2739 LBS

APPROVED

May 21, 2024

MODJESKI & MASTERS, INC.

WELDING: AWS-D1.5		PAY ITEM: ---		SURFACE PREP: SEE GENERAL NOTES		FINISH: SEE GENERAL NOTES	
CONTRACT DWG: S-010 - S-012		ERECTION DWG: E7		COATING: SEE GENERAL NOTES			
STATUS	BY	DATE					
CHECKED	MA	4/12/24					
DRAWING	JRN	4/3/24					
THIS DRAWING IS THE PROPERTY OF PRECISION BUILD SOLUTIONS. ALL RIGHTS OF DESIGN ARE RESERVED. DRAWING TO BE RETURNED UPON REQUEST.			0	FOR FABRICATION	JRN	DS	5/20/24
			REV.	DESCRIPTION	BY	CHK	DATE
				<div>TAMPA TANK</div> <div>FLORIDA STRUCTURAL STEEL</div> <div>PRECISION BUILD. Companies</div>		<div>PRECISION BUILD</div> <div>12781 US HWY 41 SOUTH, GIBSONTON, FLORIDA, 33534</div> <div>(813) 241-4261</div>	CUSTOMER P.O. No.: - FIELD WORK No.: - CONTRACT No.: <b>6997</b>
				<div>AMERICAN INSTITUTE OF STEEL CONSTRUCTION INC.</div> <div>FOUNDED 1921</div>		<div>WALKWAY GRATING DETAILS</div> <div>SR-238.31 BRIDGE REPLACEMENT</div> <div>CUSTOMER: Norfolk Southern Railway Company 650 W Peachtree St NW Atlanta, GA 30308</div> <div>JOB SITE: Norfolk Southern Bridge SR-238.31 over Young's Creek Owego, NY</div>	
						DRAWING No.: <b>12</b>	REV.: <b>ORL1</b>