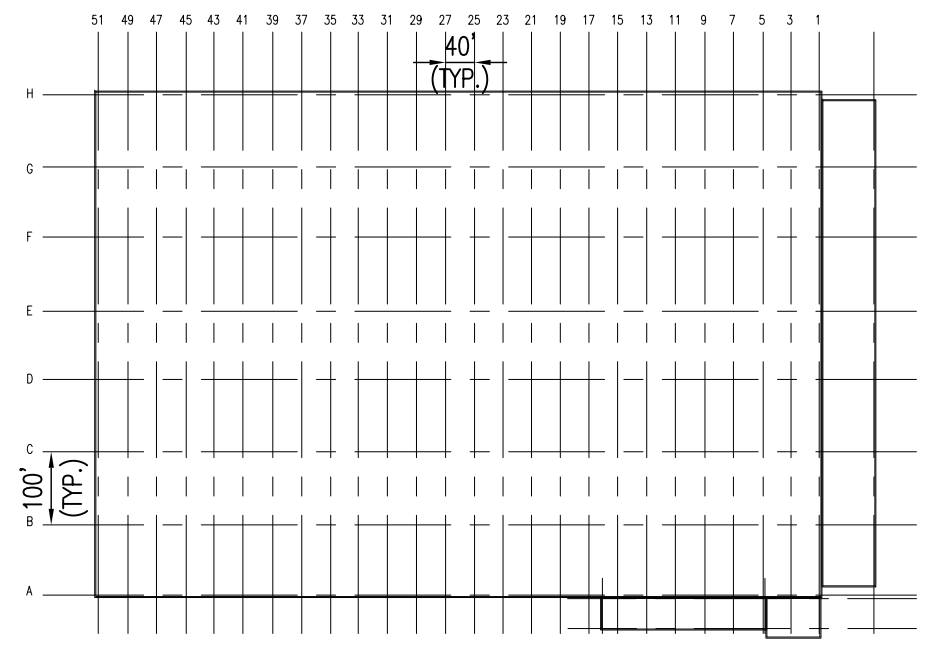
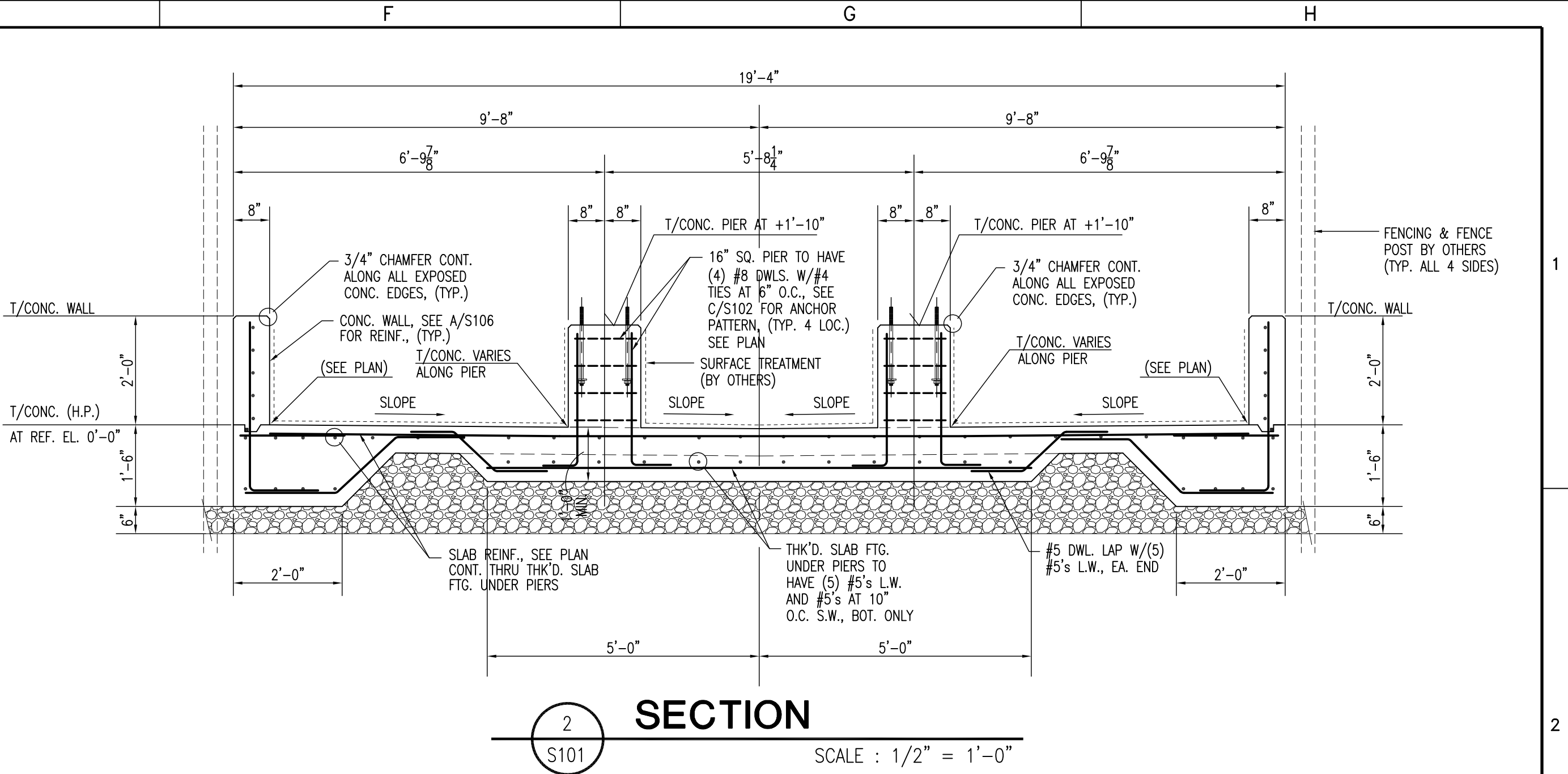
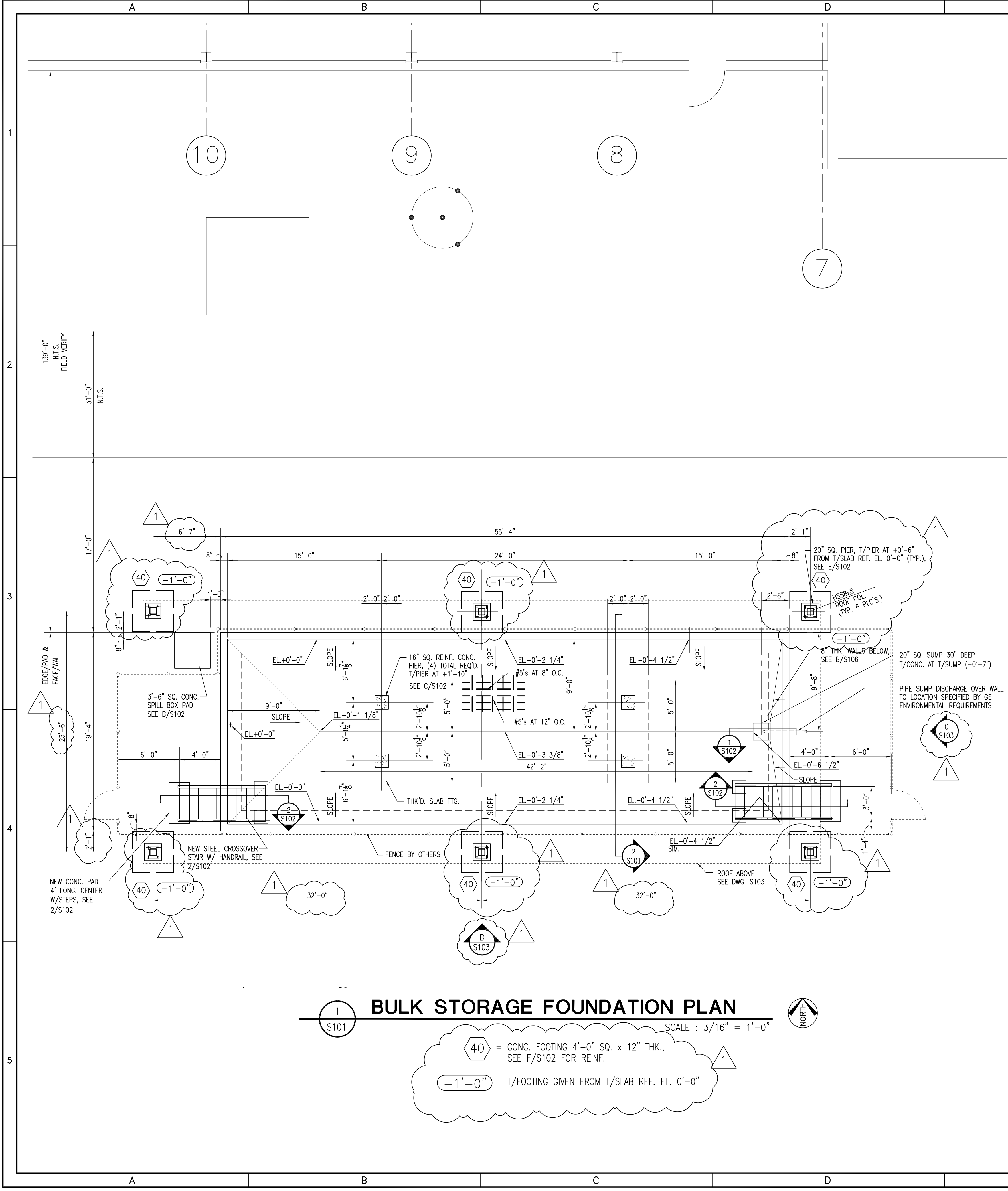






THIS DRAWING AS AN INSTRUMENT OF SERVICE SHALL NOT BE REPRODUCED, ALTERED OR REUSED IN WHOLE OR IN PART WITHOUT THE WRITTEN PERMISSION OF THE ENGINEER. ENGINEERING DRAWINGS ARE PROTECTED BY THE U.S. GOVERNMENT COPYRIGHT LEGISLATION: © COPYRIGHT 2011, CMC CARY ENGINEERING. ALL RIGHTS RESERVED

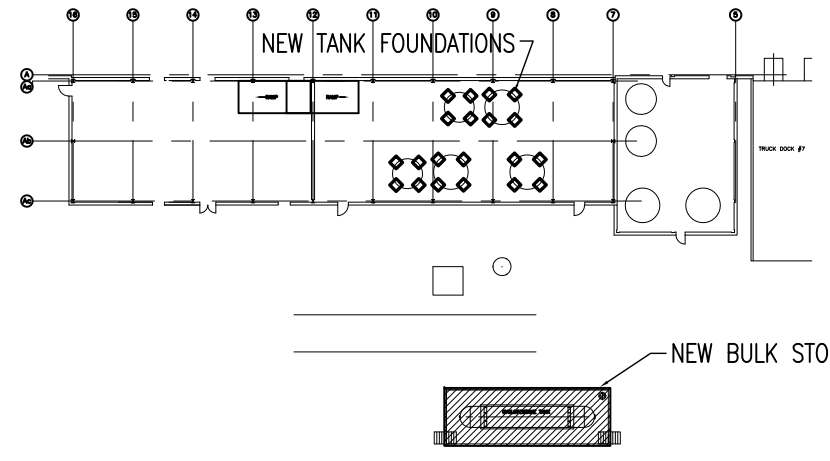


KEY PLAN

STRUCTURAL ENGINEER-OF-RECORD

**CMC Cary Engineering**

534 Old Howell Road Suite 100  
Greenville, South Carolina 29615  
Phone 864.609.5340  
Fax 864.609.5344  
CMCCE Project No. 12006



KEY PLAN

**Project Integration, Inc.**

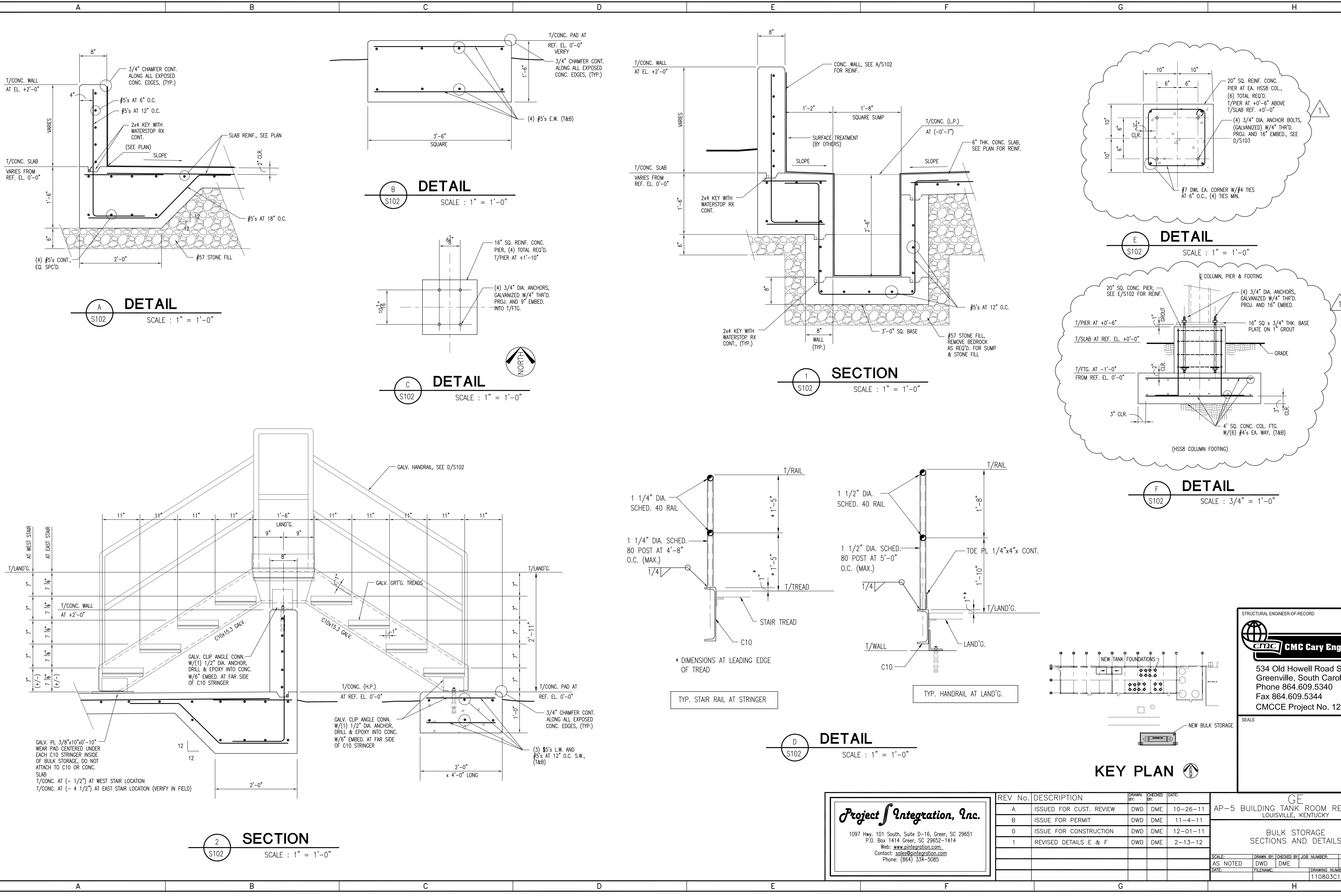
1097 Hwy. 101 South, Suite D-16, Greer, SC 29651  
P.O. Box 1414 Greer, SC 29652-1414  
Web: [www.pintegration.com](http://www.pintegration.com)  
Contact: [sales@pintegration.com](mailto:sales@pintegration.com)  
Phone: (864) 334-5085

REV No.	DESCRIPTION	DRAWN BY:	CHECKED BY:	DATE:
A	ISSUED FOR CUST. REVIEW	DWD	DME	10-26-11
B	ISSUE FOR PERMIT	DWD	DME	11-04-11
C	REVISED SUMP & COLUMNS	DWD	DME	11-09-11
O	ISSUE FOR CONSTRUCTION	DWD	DME	12-01-11
1	REVISED FOOTINGS FOR ROOF	DWD	DME	2-13-12

AP-5 BUILDING TANK ROOM RENOVATION LOUISVILLE, KENTUCKY			
BULK STORAGE FOUNDATION PLAN			
SCALE:	DRAWN BY:	CHECKED BY:	JOB NUMBER:
AS NOTED	DWD	DME	---
DATE:	FILENAME:	DRAWING NUMBER:	REV:
---	---	110803C1-101	1



THIS DRAWING IS AN INSTRUMENT OF SERVICE. IT SHALL NOT BE REPRODUCED, ALTERED OR REUSED IN WHOLE OR IN PART WITHOUT THE WRITTEN PERMISSION OF THE ENGINEER. ENGINEERING DRAWINGS ARE PROTECTED BY THE U.S. GOVERNMENT COPYRIGHT LEGISLATION. © COPYRIGHT 2011, CMC GARY ENGINEERING. ALL RIGHTS RESERVED.



**Project Integration, Inc.**

1097 Hwy. 101 South, Suite D-16, Greer, SC 29651  
P.O. Box 1414 Greer, SC 29652-1414  
Web: [www.projectintegration.com](http://www.projectintegration.com)  
Contact: [sales@projectintegration.com](mailto:sales@projectintegration.com)  
Phone: (864) 334-5085

REV No.	DESCRIPTION	DRAWN BY:	CHECKED BY:	DATE:
A	ISSUED FOR CUST. REVIEW	DWD	DME	10-26-11
B	ISSUE FOR PERMIT	DWD	DME	11-4-11
C	ISSUE FOR CONSTRUCTION	DWD	DME	12-01-11
1	REVISED DETAILS E & F	DWD	DME	2-13-12

**CE**  
AP-5 BUILDING TANK ROOM RENOVATION  
LOUISVILLE, KENTUCKY

**BULK STORAGE  
SECTIONS AND DETAILS**

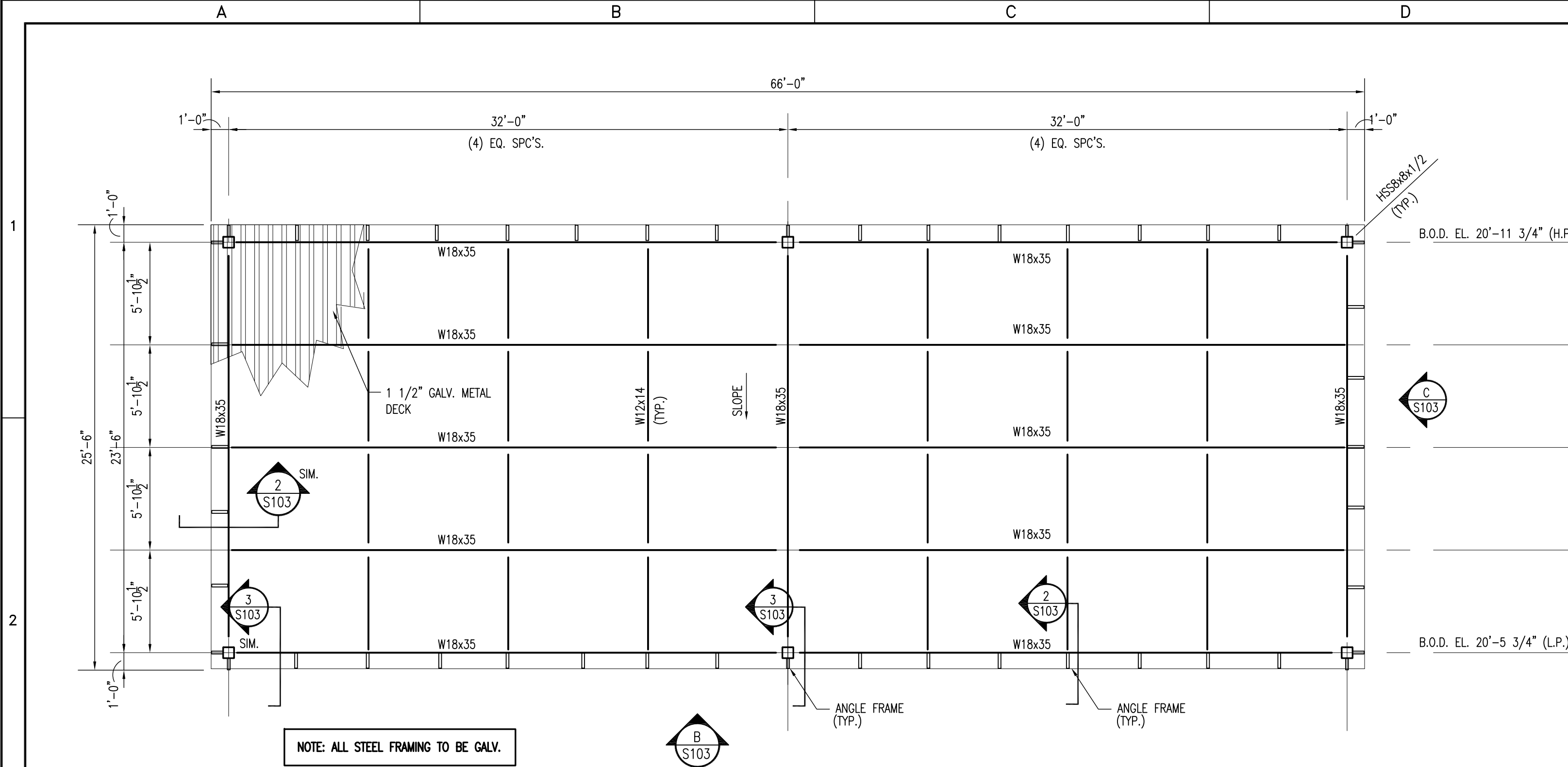
SCALE: AS NOTED  
DATE: 110803C1-102

DRAWN BY: DWD  
CHECKED BY: DME  
FILENAME: 110803C1-102

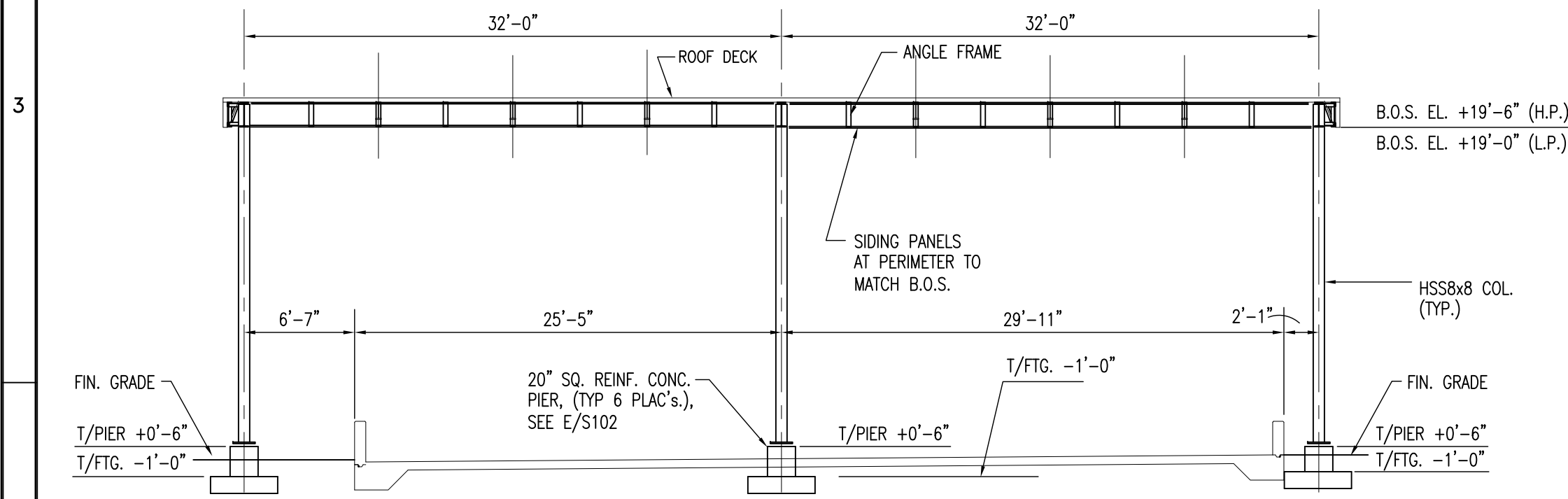
SHEET: 1



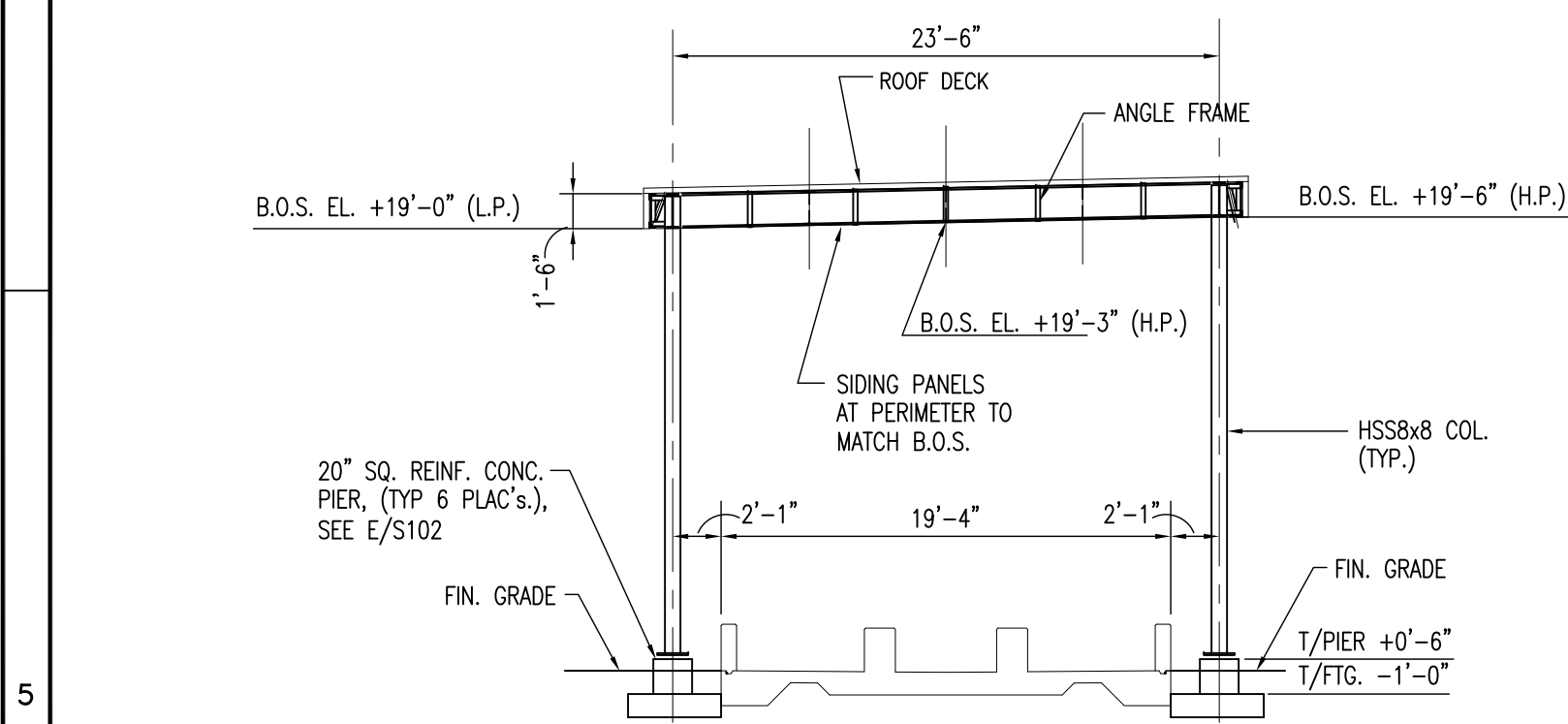
THIS DRAWING AS AN INSTRUMENT OF SERVICE SHALL NOT BE REPRODUCED, ALTERED OR REUSED IN WHOLE OR IN PART WITHOUT THE WRITTEN PERMISSION OF THE ENGINEER. ENGINEERING DRAWINGS ARE PROTECTED BY THE U.S. GOVERNMENT COPYRIGHT LEGISLATION: © COPYRIGHT 2011, CMC CARY ENGINEERING. ALL RIGHTS RESERVED



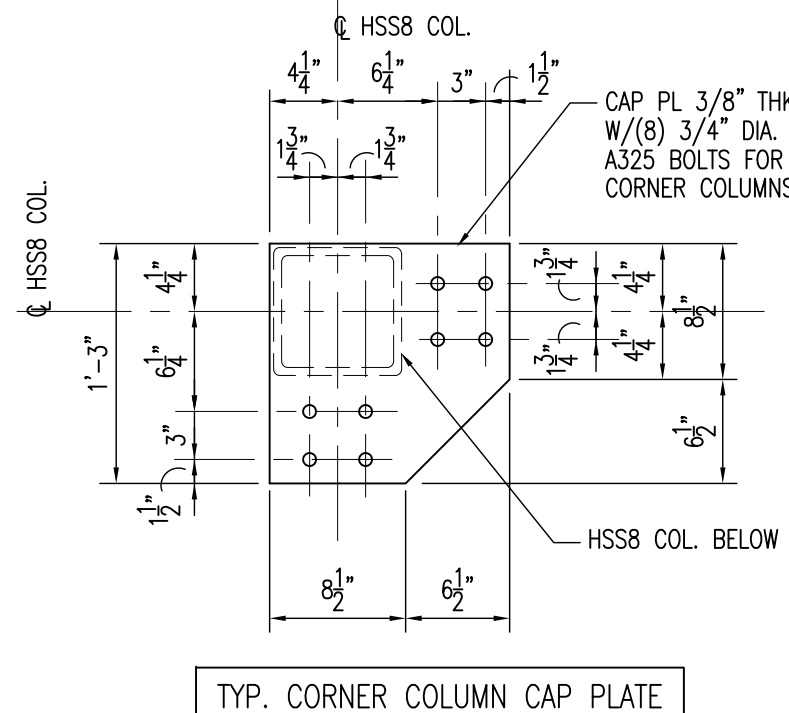
**1 BULK STORAGE ROOF FRAMING PLAN**  
SCALE : 3/16" = 1'-0"



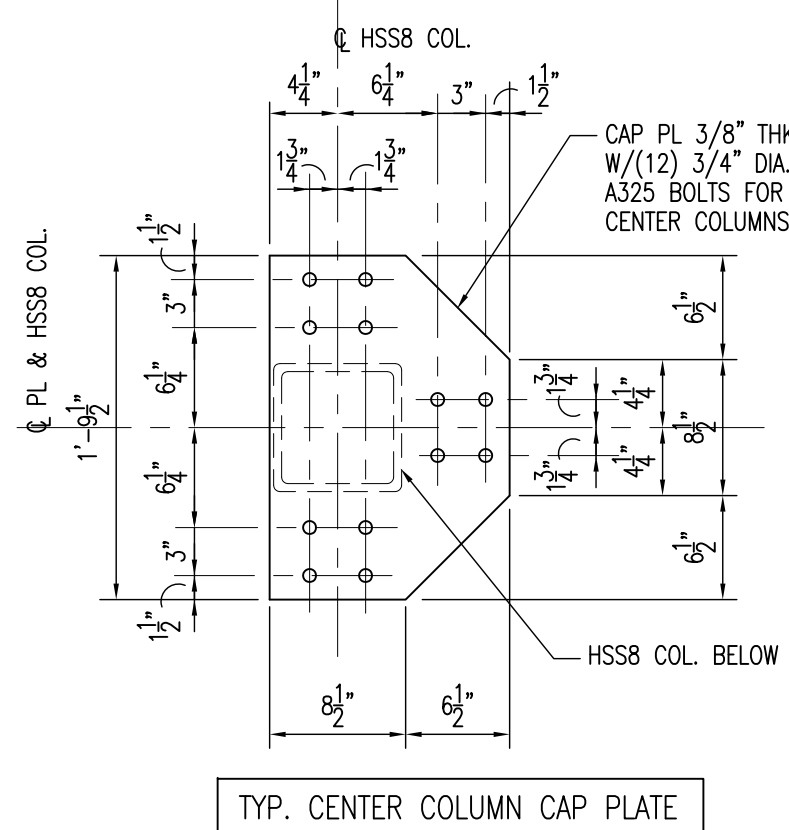
**B SOUTH ELEVATION**  
(NORTH ELEVATION OPP. HAND)  
SCALE : 1/8" = 1'-0"



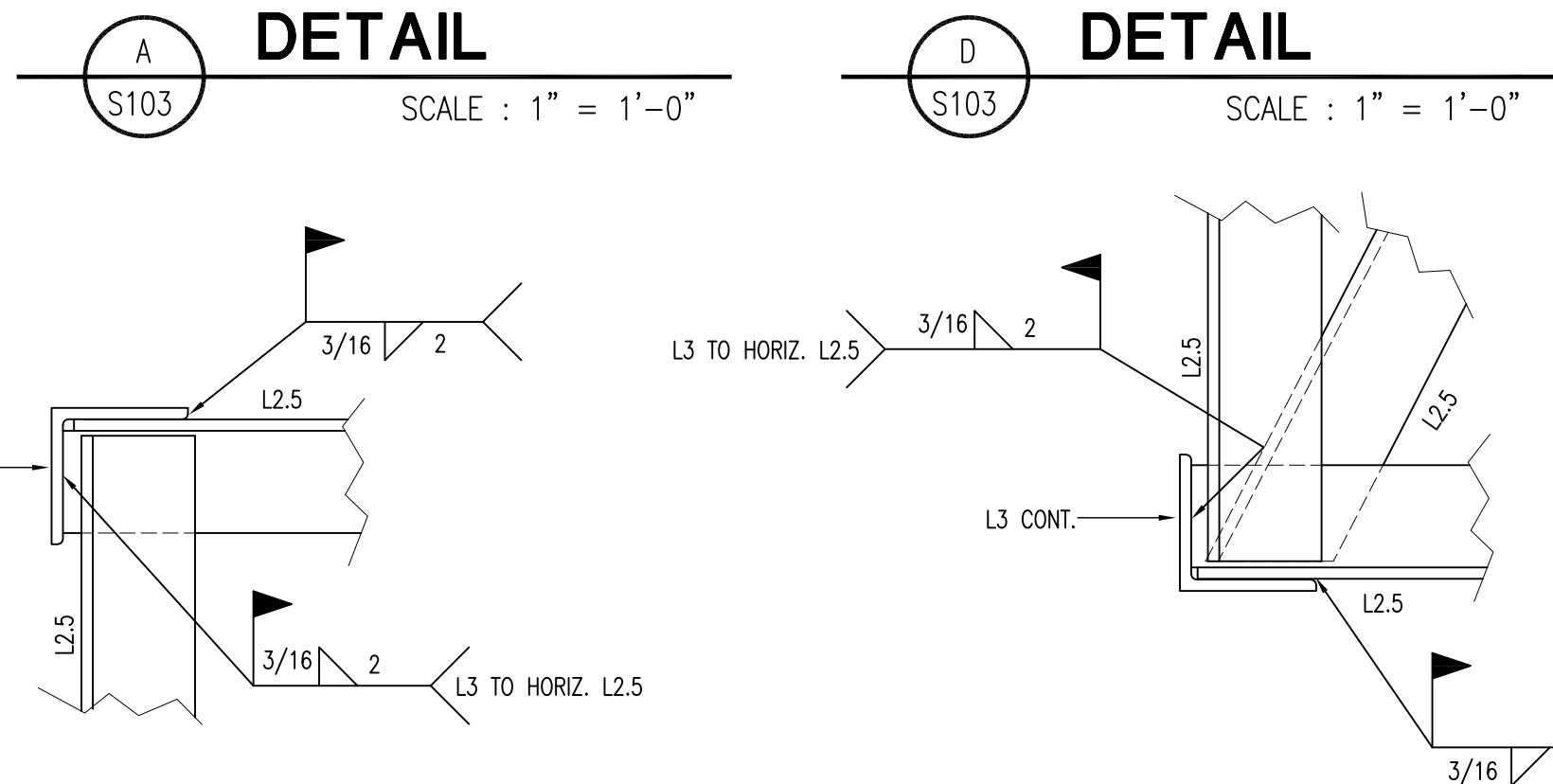
**C EAST ELEVATION**  
(WEST ELEVATION OPP. HAND)  
SCALE : 1/8" = 1'-0"



**A DETAIL**  
SCALE : 1" = 1'-0"



**E DETAIL**  
SCALE : 1" = 1'-0"



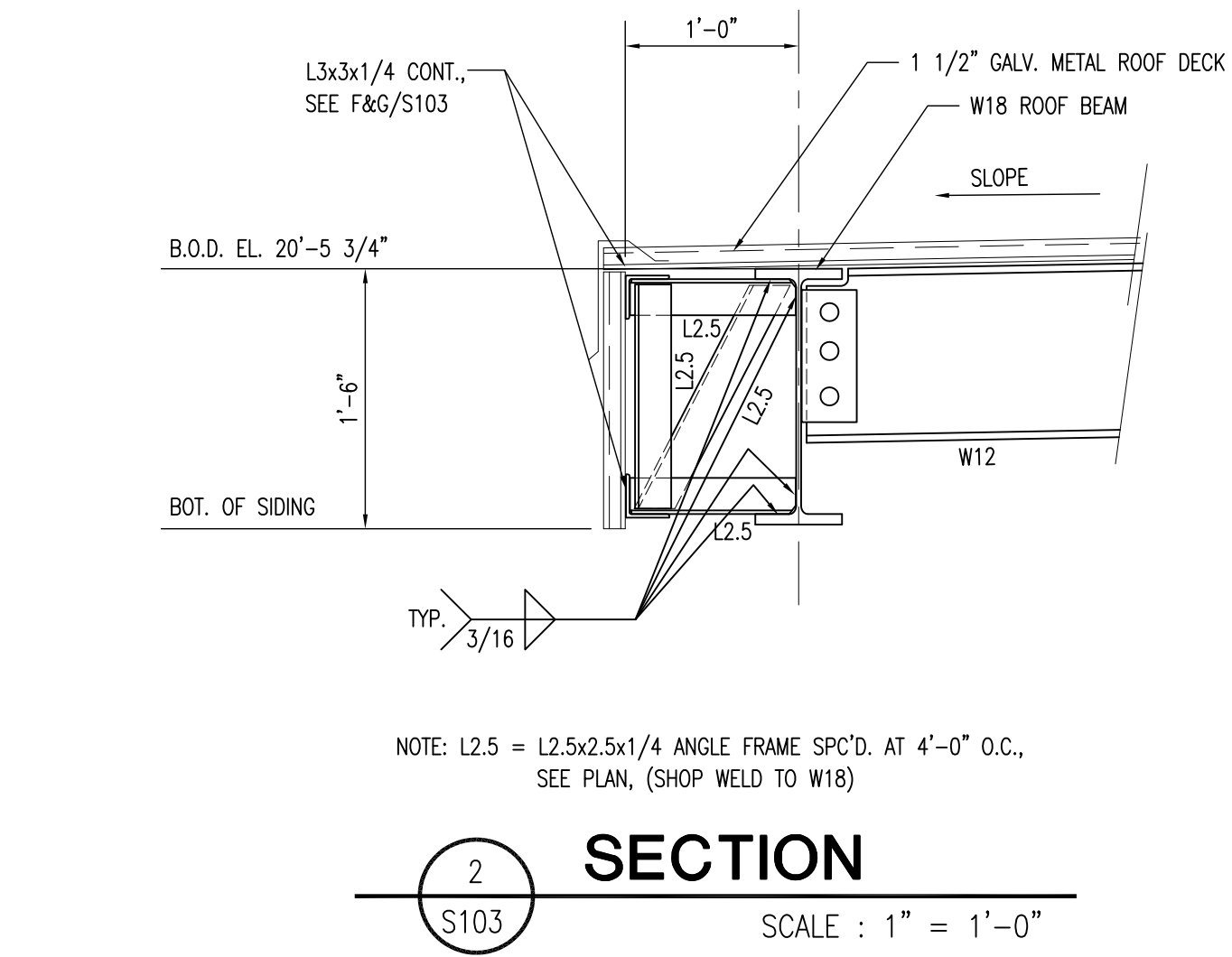
**D DETAIL**  
SCALE : 1" = 1'-0"

**F DETAIL**  
SCALE : 3" = 1'-0"

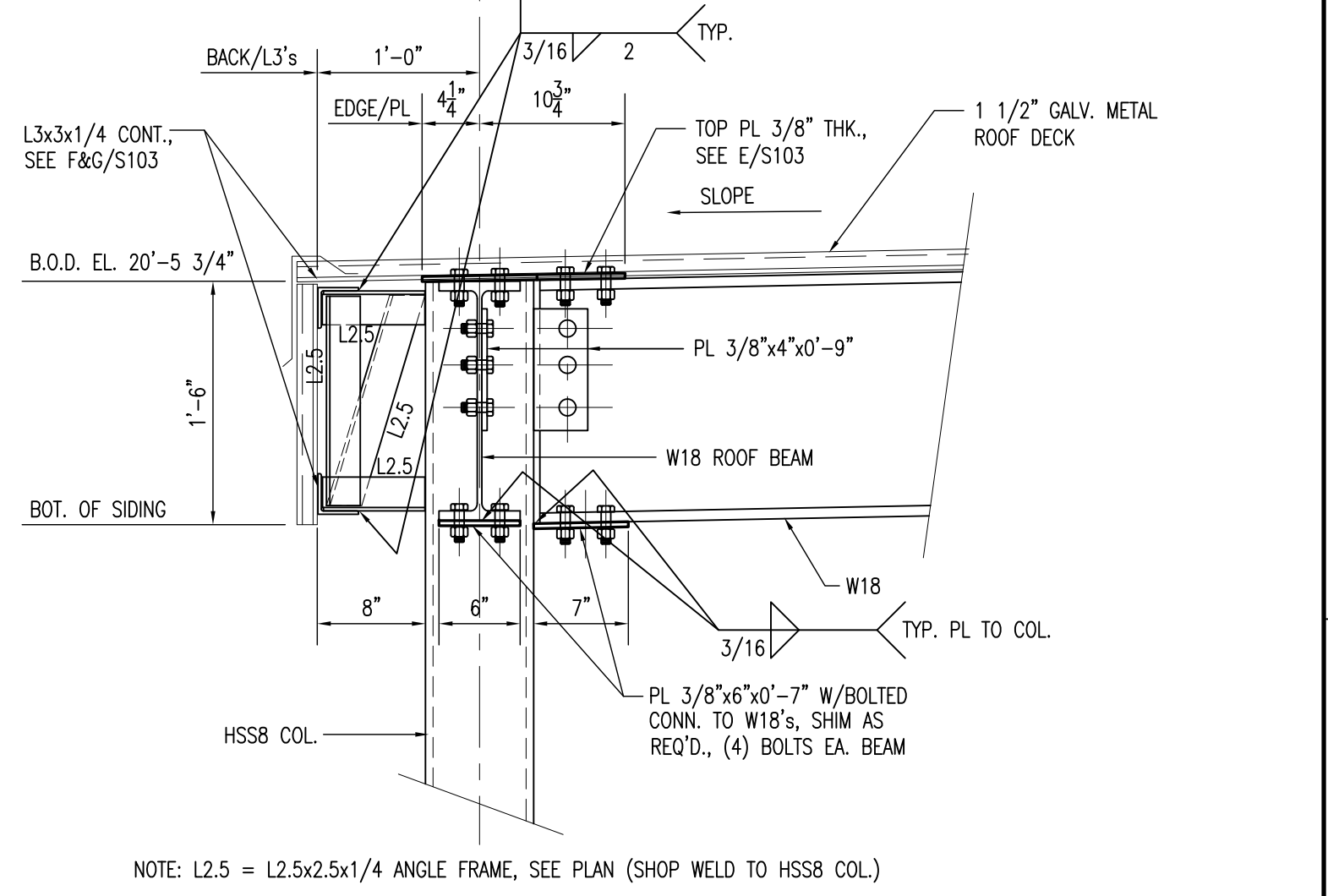
**G DETAIL**  
SCALE : 3" = 1'-0"

NOTE: ALL ELEVATIONS ARE GIVEN RELATIVE TO REFERENCE ELEVATION 0'-0" T/CONC. SLAB HIGH POINT (H.P.), SEE 1&2 ON S101.

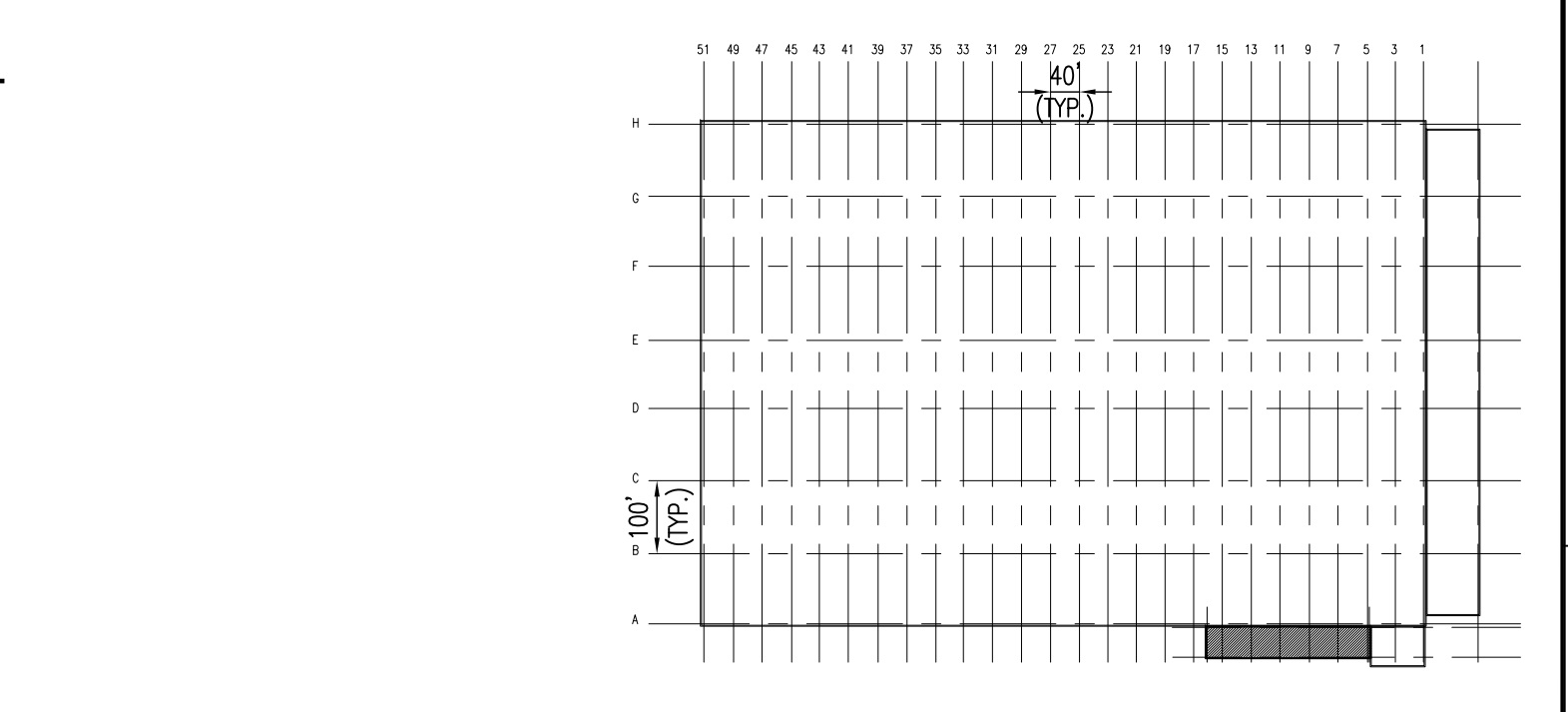
**Project Integration, Inc.**  
1097 Hwy. 101 South, Suite D-16, Greer, SC 29651  
P.O. Box 1414 Greer, SC 29652-1414  
Web: [www.projectintegration.com](http://www.projectintegration.com)  
Contact: [sales@integration.com](mailto:sales@integration.com)  
Phone: (864) 334-5085



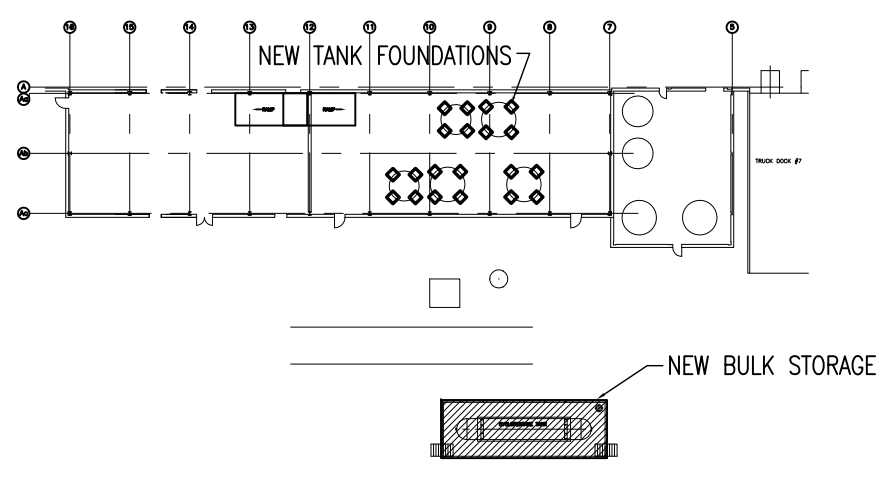
**2 SECTION**  
SCALE : 1" = 1'-0"



**3 SECTION**  
SCALE : 1" = 1'-0"



**KEY PLAN**



**KEY PLAN**

REV No.	DESCRIPTION	DRAWN BY:	CHECKED BY:	DATE:
A	ISSUE FOR REVIEW	DWD	DME	2-13-12

AP-5 BUILDING TANK ROOM RENOVATION LOUISVILLE, KENTUCKY			
BULK STORAGE ROOF FRAMING PLAN			
SCALE:	DWD	DME	SHEET:
AS NOTED	DWD	DME	
DATE:	FILENAME:	DRAWING NUMBER:	REV:
		110803C1-103	A

STRUCTURAL ENGINEER-OF-RECORD

**CMC Cary Engineering**

534 Old Howell Road Suite 100  
Greenville, South Carolina 29615  
Phone 864.609.5340  
Fax 864.609.5344  
CMCCE Project No. 12006