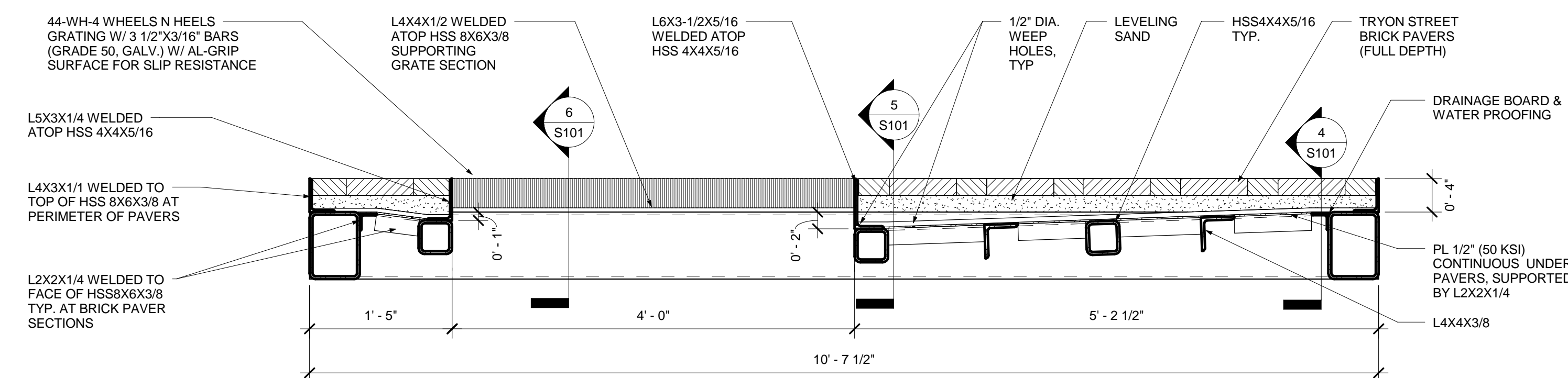
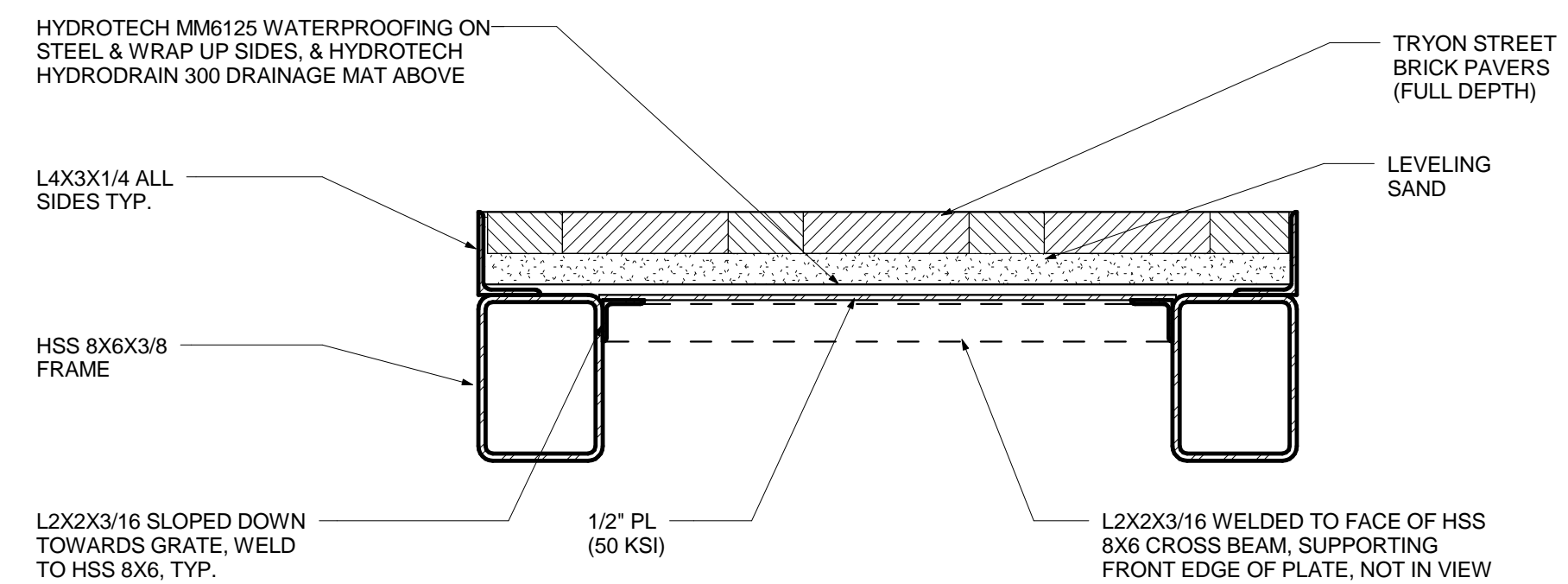


2 OPTION 1 VAULT COVER PLAN  
S101 1" = 1'-0"



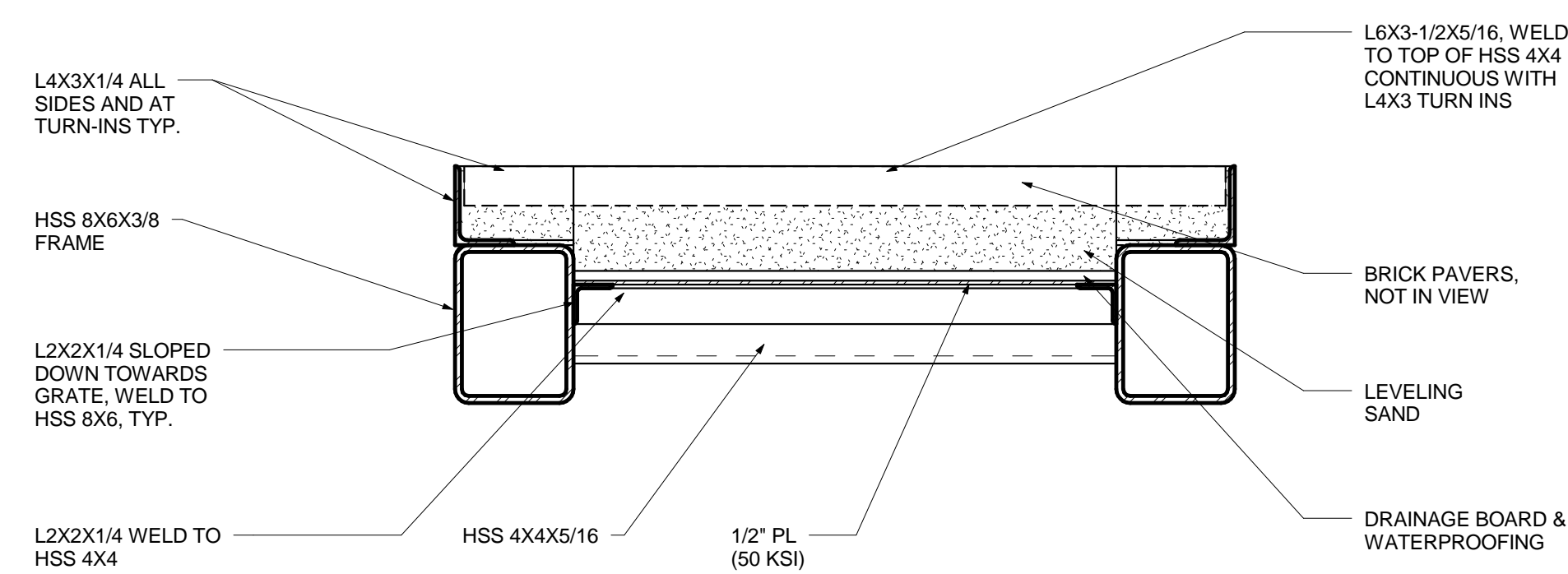
3 OPTION 1 VAULT COVER  
ELEVATION  
S101 1" = 1'-0"



4  
S101

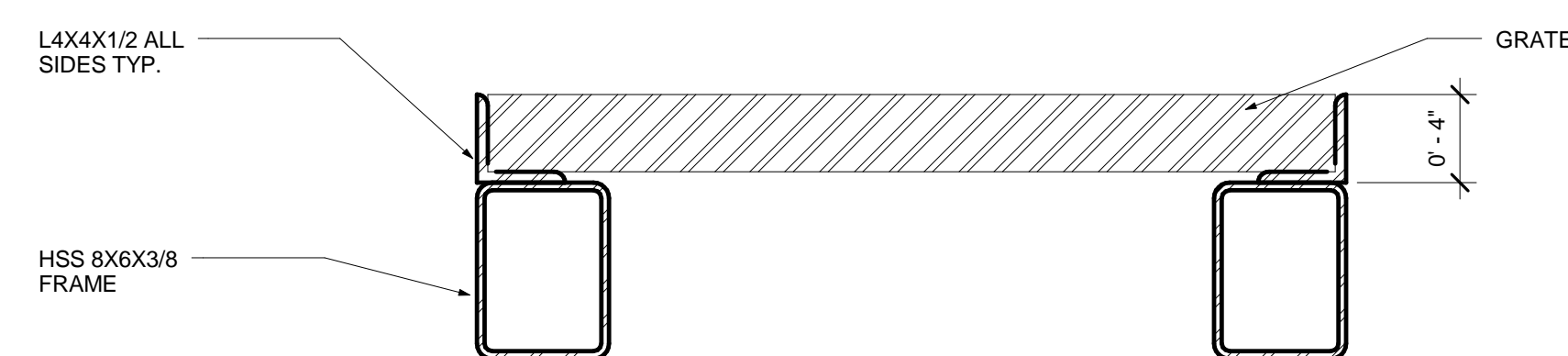
OPTION 1 VAULT COVER  
SECTION

1 1/2" = 1'-0"



5  
S101

OPTION 1 VAULT COVER  
SECTION  
1 1/2" = 1'-0"



6  
S101

PRICING NOTES:

1. DESIGN LOADS PER 2012 NCBC:  
250 PSF                      LIVE LOAD  
8000 LB                     VEHICLE TIRE LOAD
2. INCLUDE ALLOWANCE FOR PATCHING EXISTING VAULT CONCRETE AS REQUIRED.
3. PRICING TO INCLUDE REMOVAL AND DISPOSAL OF EXISTING VAULT LIDS ALONG WITH EXISTING CONNECTIONS TO VAULT WALLS.
4. ALL NEW STEEL TO BE GALVANIZED AFTER FABRICATION.
5. PROVIDE BEARING ANGLES ON EXISTING CONCRETE AT EACH CCOFIER PANELS (COMMON BEARING AT ADJACENT PANELS), L6x6x3/8x1'-4" AT MIDDLE (GALV.) & L6x6x3/8x0'-10" AT EDGES (GALV.) W/ EPOXY ANCHORS TO CONCRETE & CLIP ANGLE W/ BOLT TO PANELS (MUST BE REMOVABLE).
6. PROVIDE 4 DUKE STANDARD STAINLESS STEEL LIFTERS PER PANEL.
7. DUKE ENERGY MUST CONFIRM LAYOUT AND TYPE OF GRATING IS ACCEPTABLE FOR TRANSFORMERS.
8. ALL LOADS & DIMENSIONS MUST BE APPROVED BY DUKE ENERGY.
9. ALL PAVERS AND GRATING TO BE SLIP RESISTANT.
10. CONTRACTOR TO WEIGH AND STAMP PANEL WEIGHT ON EACH PANEL DURING INSTALLATION.

**NOT FOR CONSTRUCTION**

FOR

## FOR PRICING

DATE  
29.2015

[illegible]

## CT TEA

MAN IN CHARGE  
YAN STARR, PE

CT MANAGER  
YAN STARR, PE

LIN MANNING

CT NAME

WELLS FARGO CE  
KE VAULT LID

## PLACEMENT

S Tryon St  
Charlotte, NC 28202

Charlotte, NC 28202

CT NO.

33.4888.00

**TITLE**

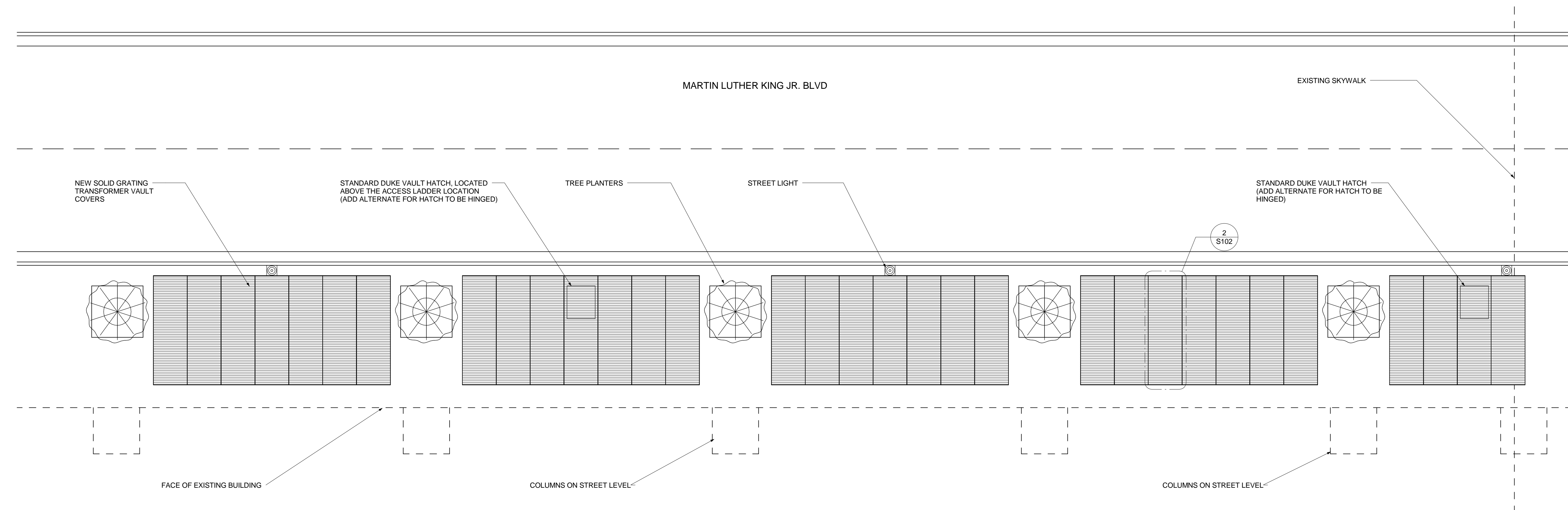
### MULT LID PLAN, SECTIONS & DETA

### OPTION 1

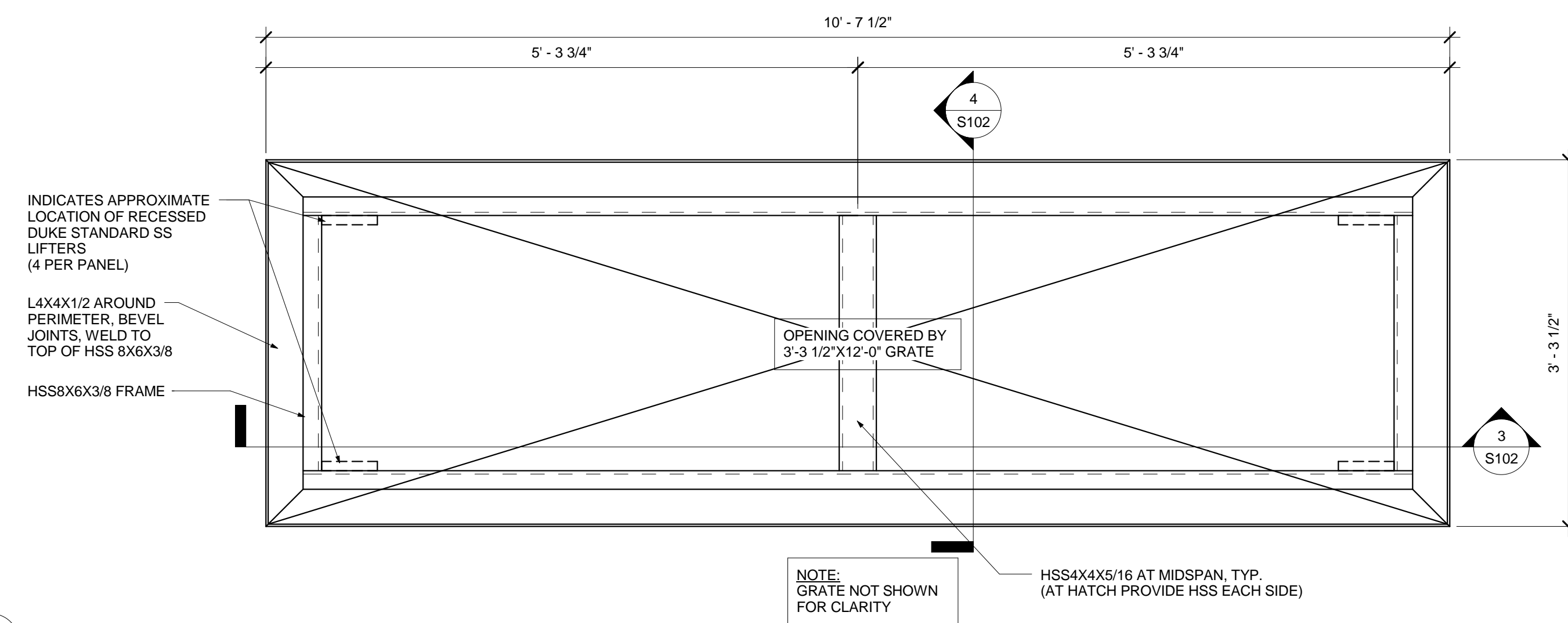
NUMBER

S101

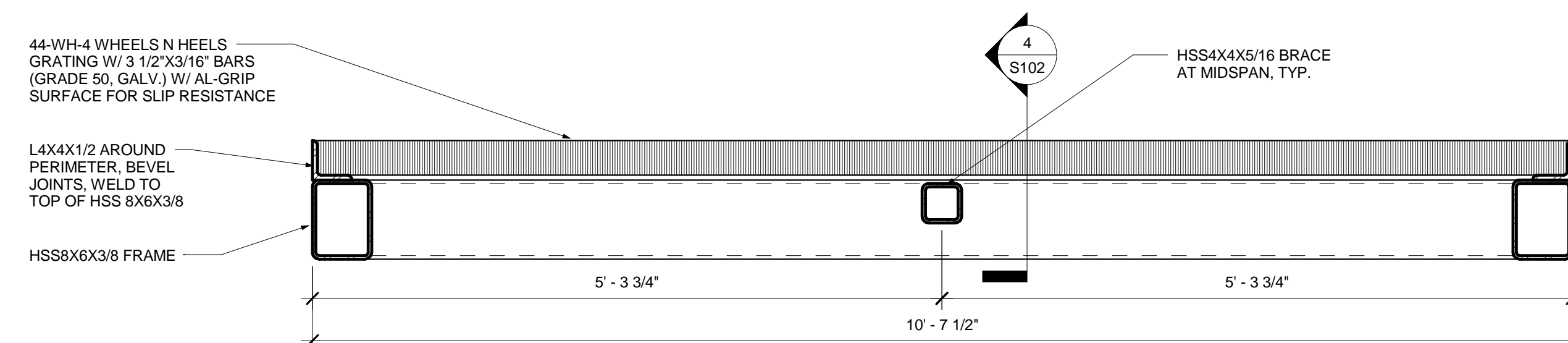
---



1 OPTION 2 PLAN VIEW  
S102 3/16" = 1'-0"



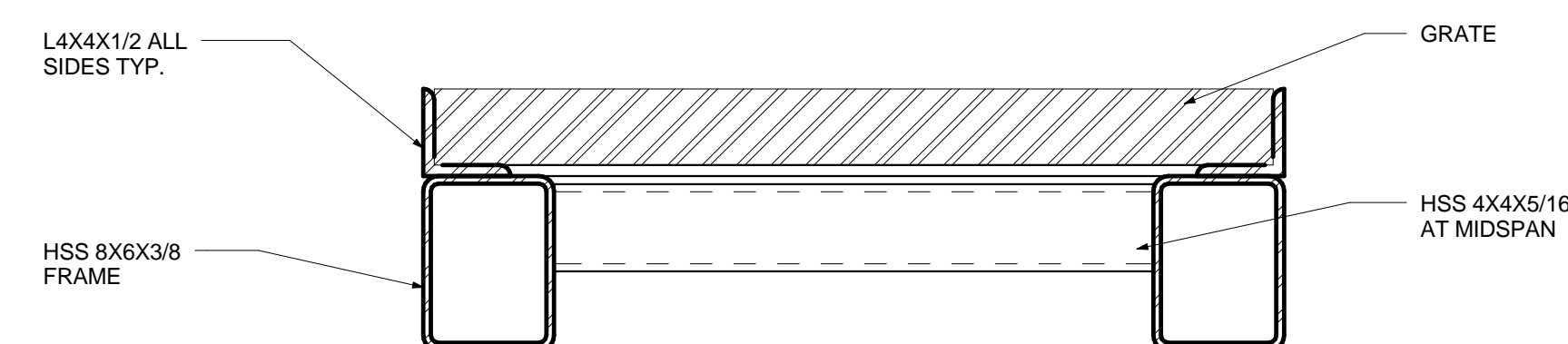
2 OPTION 2 VAULT COVER PLAN  
S102 1" = 1'-0"



3  
S102

OPTION 2 VAULT COVER  
ELEVATION

1" = 1'-0"



4 OPTION 2 VAULT COVER GRATE  
SECTION  
S102 1 1/2" = 1'-0"

PRICING NOTES:

1. DESIGN LOADS PER 2012 NBCB, INCLUDING HS-20 LOADING:  
250 PSF LIVE LOAD  
18000 LB VEHICLE TIRE LOAD (BENDING)  
26000 LB VEHICLE TIRE LOAD (SHEAR)
2. INCLUDE ALLOWANCE FOR PATCHING EXISTING VAULT CONCRETE AS REQUIRED.
3. PRICING TO INCLUDE REMOVAL AND DISPOSAL OF EXISTING VAULT LIDS ALONG WITH EXISTING CONNECTIONS TO VAULT WALLS.
4. ALL NEW STEEL TO BE GALVANIZED AFTER FABRICATION.
5. PROVIDE BEARING ANGLES ON EXISTING CONCRETE AT EACH CORNER OF PANELS (COMMON BEARING AT ADJACENT PANELS), L6x6x3/8x1'-4" AT MIN. (GALV.) L6x6x3/8x1'-0" AT EDGES (GALV.) W/ EPOXY ANCHORS TO CONCRETE & CLIP ANGLE W/ BOLT TO PANELS (MUST BE REMOVABLE).
6. PROVIDE 4 DUKE STANDARD STAINLESS STEEL LIFTERS PER PANEL.
7. DUKE ENERGY MUST CONFIRM LAYOUT AND TYPE OF GRATING IS ACCEPTABLE FOR TRANSFORMERS.
8. ALL LOADS & DIMENSIONS MUST BE APPROVED BY DUKE ENERGY.
9. ALL PAVERS AND GRATING TO BE SLIP RESISTANT.
10. CONTRACTOR TO WEIGH AND STAMP PANEL WEIGHT ON EACH PANEL DURING INSTALLATION.

**NOT FOR CONSTRUCTION**

FOR

## FOR PRICING

DATE \_\_\_\_\_

29.2015

[illegible]

## CT TEAM

MAN STAFF

## PROJECT MANAGER

YAN STAI

## IN TEAM

LIN MANF

WELLS FARGO CENTER  
KEY VAULT LID  
PLACEMENT  
S Tryon St  
Charlotte, NC 28202

CT NO.

33.4888.00

**TITLE**

### MULTI LID PLAN, SECTIONS & DETAILS OPTION 2

NUMBER