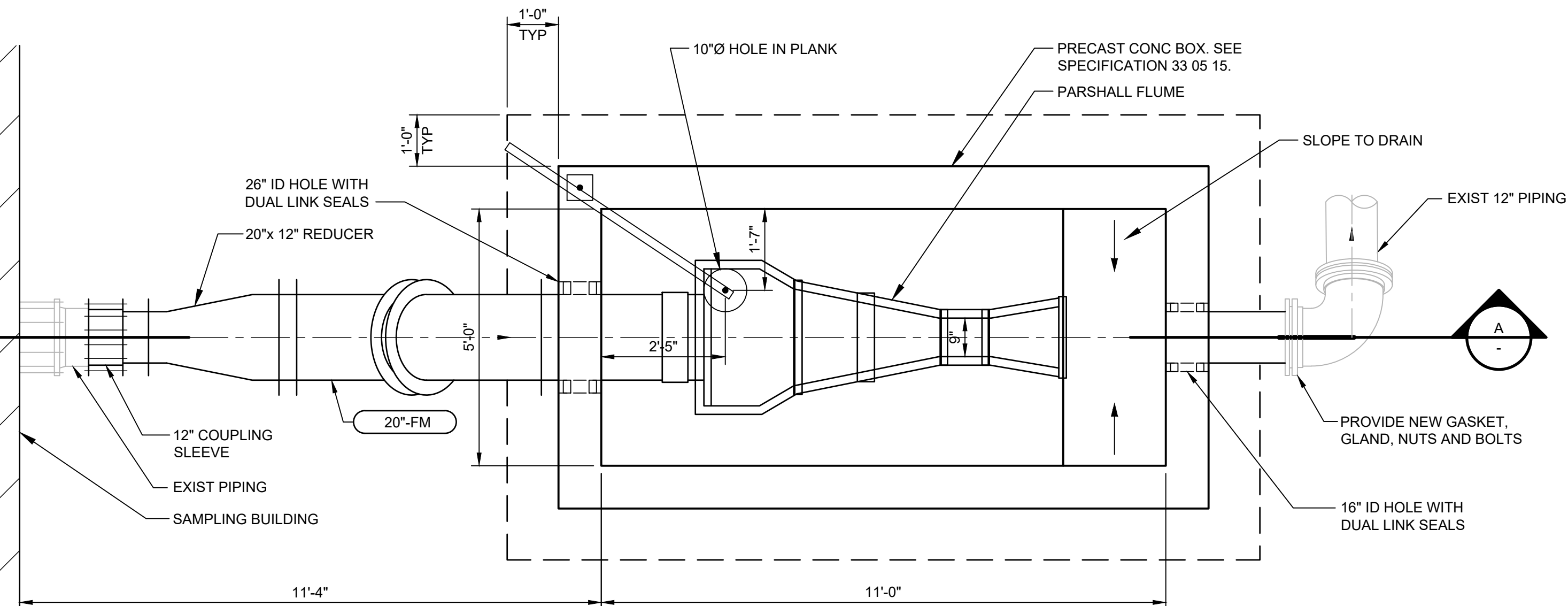
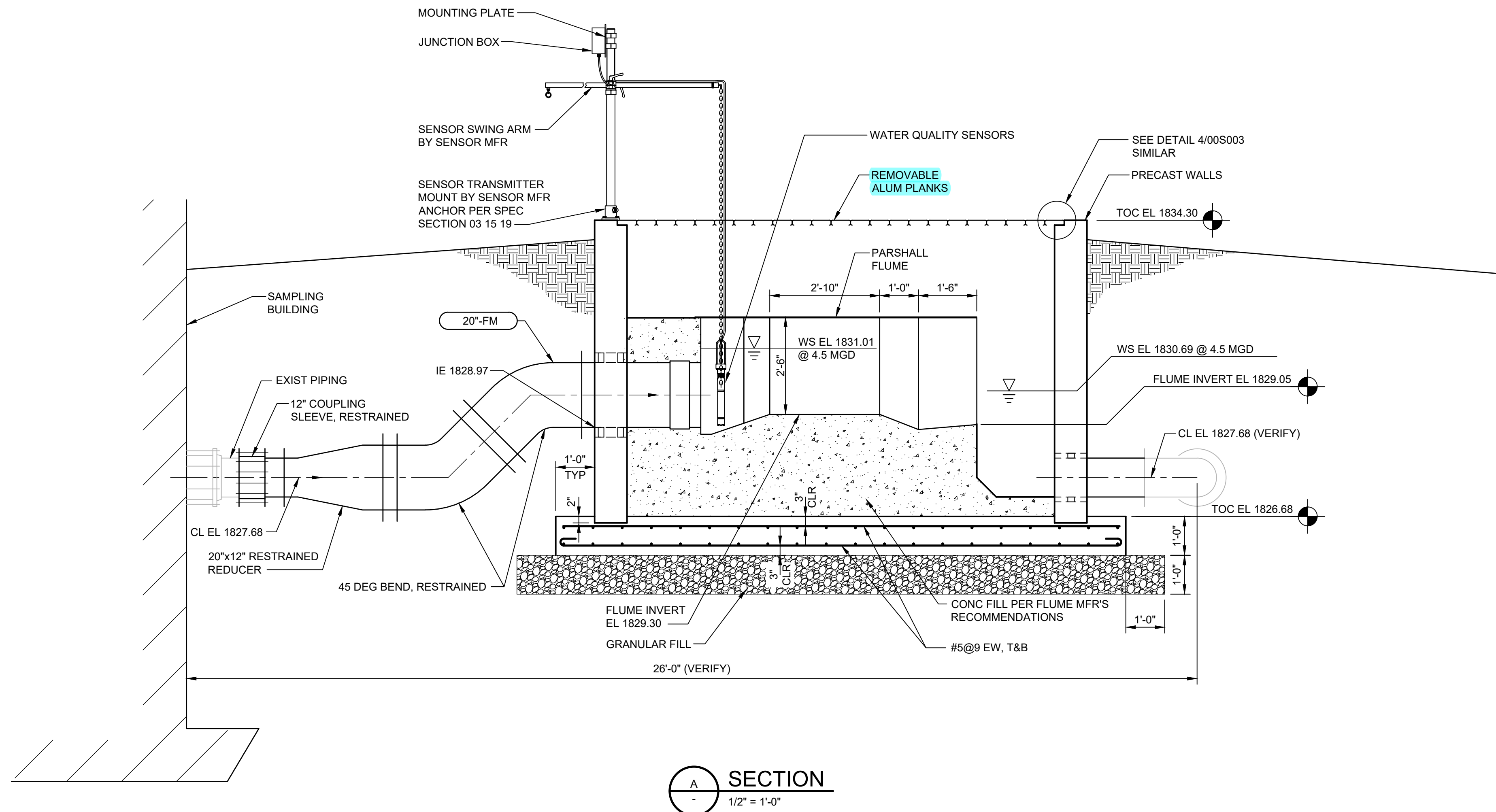


1. Type 6063-T6 aluminum plank panels with 6 IN wide extruded sections.
2. Fabrication and Tolerances shall be in accordance with NAAMM MBG 531.
3. Planks:
 - a. Surface: Unpunched with raised transverse ribs for stiffness and skid resistance.
 - b. Sides: Plain.
 - c. Minimum depth: 2 IN.
 - d. Bearing bars minimum 1.2 IN OC spacing.
 - e. Mill finish.
4. Panels:
 - a. Connect multiple planks with mechanical or welded connections to form standard panel widths, not to exceed 36 IN.
 - b. Every panel shall be removable, so that adjacent panels shall stay in place.
 - c. Band end of plank panels.
5. Design live load:
 - a. 100 psf, uniform load.
 - b. 300 LBS concentrated load on 4 IN square area.
 - c. All components to be adequate for the uniform load or the concentrated load, whichever requires the stronger component.
 - d. Maximum deflection: $1/300$ of span under a superimposed live load of 50 psf.
6. Openings through grating:
 - a. Reinforced to provide required load carrying capacity and banded with 4 IN high toe plate.
 - b. Lay out panel sections so that openings occur at joints between panel sections.
7. Clips and bolts: Stainless steel.
8. Seat angles: Aluminum.



PARSHALL FLUME - PLAN

$1/2'' = 1'-0''$

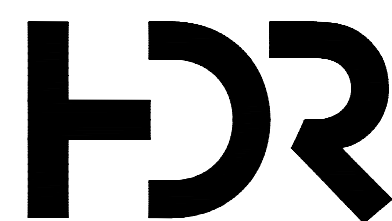


SECTION

$$1/2'' = 1'-0''$$

GENERAL NOTES:

1. PRECAST MANUFACTURER SHALL DESIGN THE WALL THICKNESS PER SPECIFICATION 33 05 15.
2. VERIFY ALL EXISTING ELEVATIONS AND DIMENSIONS PRIOR TO ORDERING MATERIALS. NOTIFY ENGINEER OF ANY VARIATIONS.
3. INSTALL PARSHALL FLUME PER SPECIFICATION SECTION 06 82 00 AND THE MANUFACTURER'S INSTRUCTIONS.
4. ALL METAL MATERIAL IN CONTACT WITH FLOW STREAM SHALL BE TYPE 316 STAINLESS STEEL INCLUDING BUT NOT LIMITED TO SENSOR CHAIN, FASTENERS, LINK SEAL BOLTS, ETC.
5. SEE SPECIFICATION 04 05 00 FOR PIPE LINING REQUIREMENTS.



01/11/2022	ISSUED FOR BID
11/23/2021	ISSUED FOR 100% REVIEW
10/18/2021	ISSUED FOR 90% CLIENT REVIEW
6/30/2021	ISSUED FOR 50% CLIENT REVIEW

ISSUE	DATE	DESCRIPTION
-------	------	-------------

PROJECT MANAGER	A. SHRIVASTAVA
PROCESS	D. DEVITT
STRUCTURAL	A. GINZBURG
ELECTRICAL	J. ANDERSEN
CIVIL	B. HINDLEY
INSTRUMENTATION	E. SANDERS
PROJECT NUMBER	10273453



CITY OF GRAND ISLAND WASTEWATER TREATMENT PLANT FLOW IMPROVEMENTS



PARSHALL FLUME PLAN

FILENAME	01D501.dwg
SCALE	AS NOTED

SHEET

01D501