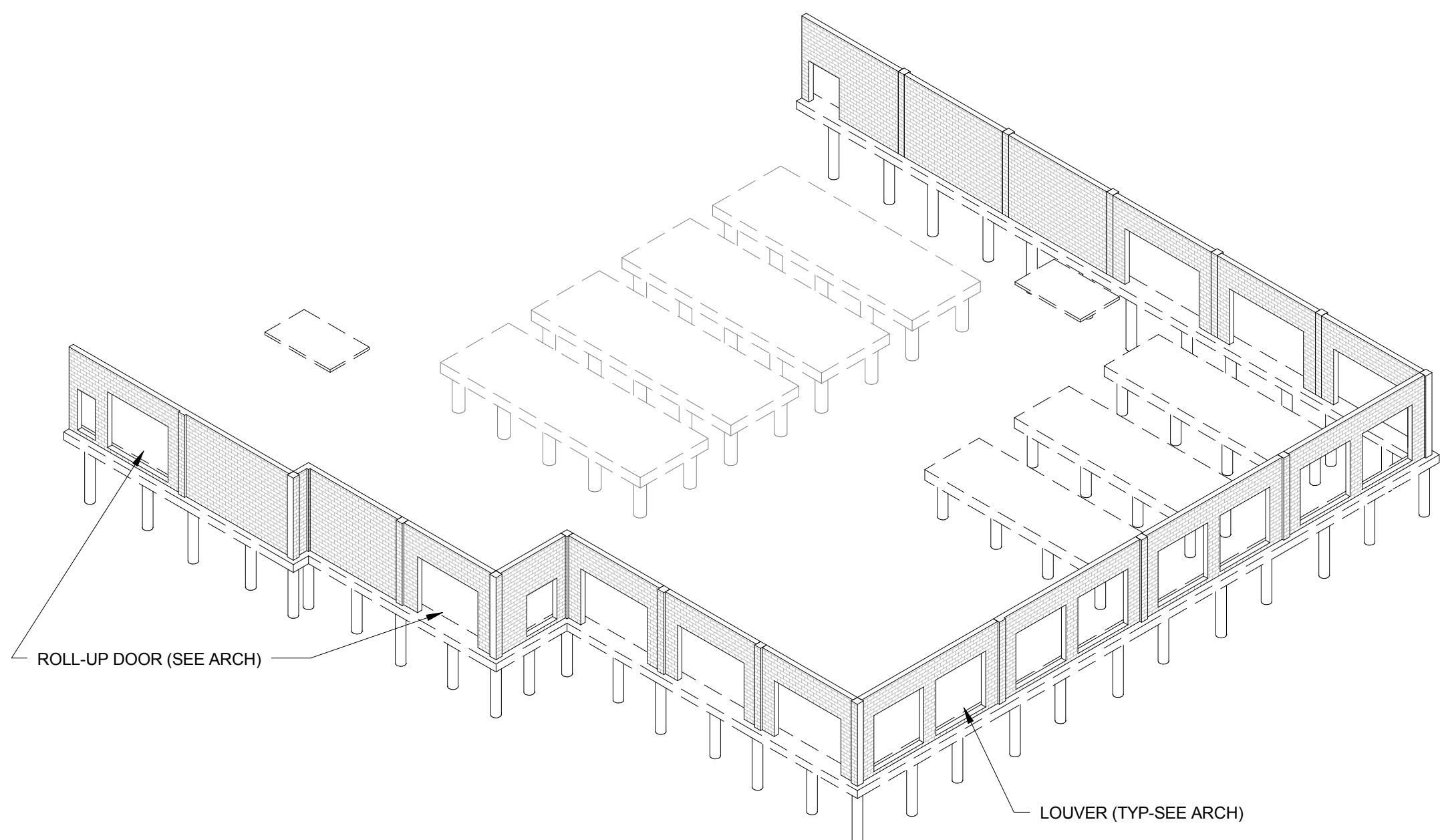


RTU FDN

SCALE: 3/16" = 1'-0"

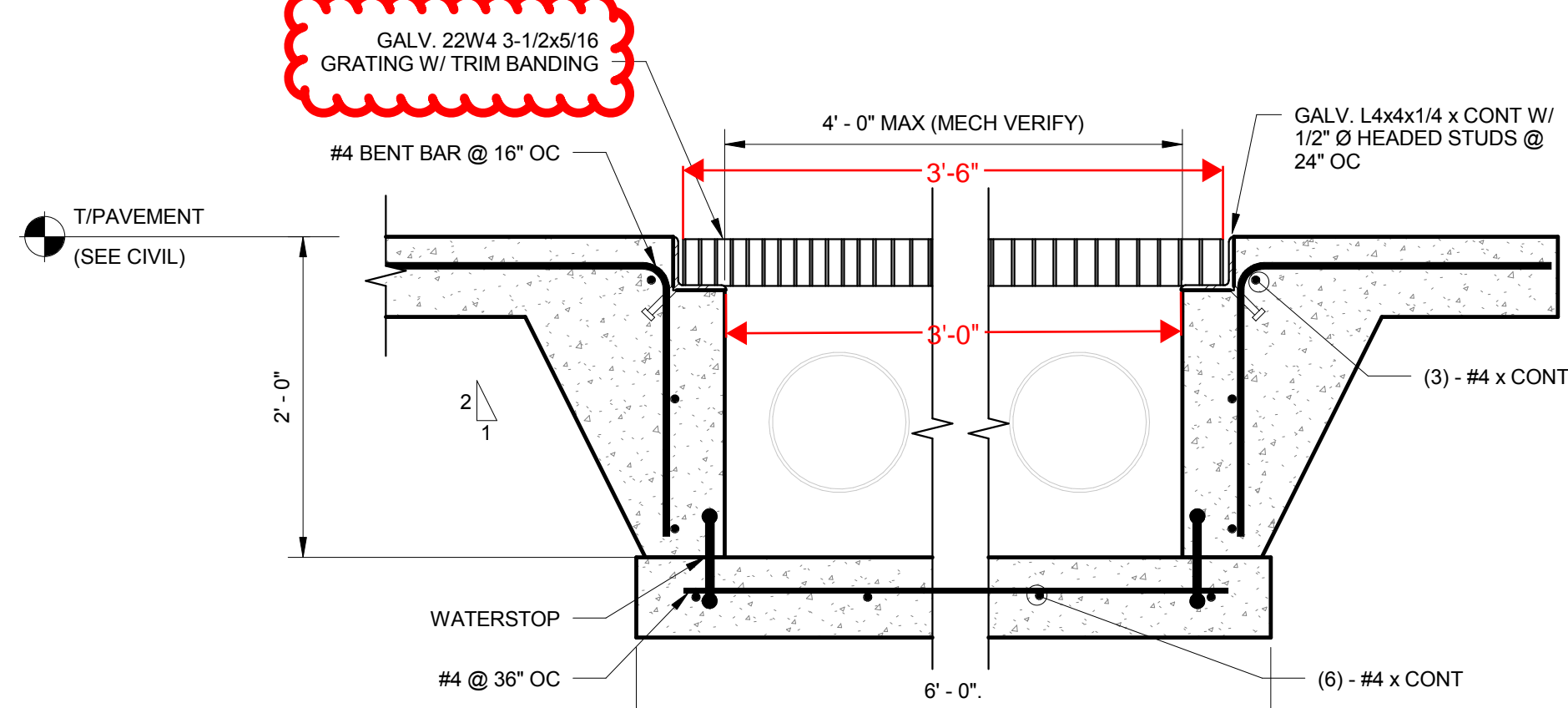
NOTES:

- GC SHALL COORDINATE PLUMBING AND UTILITIES LOCATIONS WITH FOUNDATION AS NEEDED. ADDITIONALLY GC SHALL COORDINATE FOUNDATION ELEVATIONS WITH PLUMBING AND UTILITIES AS NEEDED. FORWARD ANY FOUNDATION LOCATION CHANGE REQUESTS TO STRUCTURAL ENGINEER OF RECORD FOR REVIEW AND APPROVAL.
- NO FOUNDATION/PIERS SHALL BE POURED UNTIL A GEOTECHNICAL ENGINEER HAS REVIEWED AND VERIFIED THAT THE PIERS ARE ADEQUATE TO SUPPORT WEIGHT OF RTU (GC TO PROVIDE GENERATOR SPECIFICATIONS).
- ALL PIERS TO BE DP-1 (UNLESS NOTED OTHERWISE). SEE SCHEDULE AND 10/S3.1 FOR TYPICAL DETAILS AND 9/S3.1 FOR TYP PIER LAYOUT.
- RTU WEIGHT APPROXIMATELY 10,000 LBS.



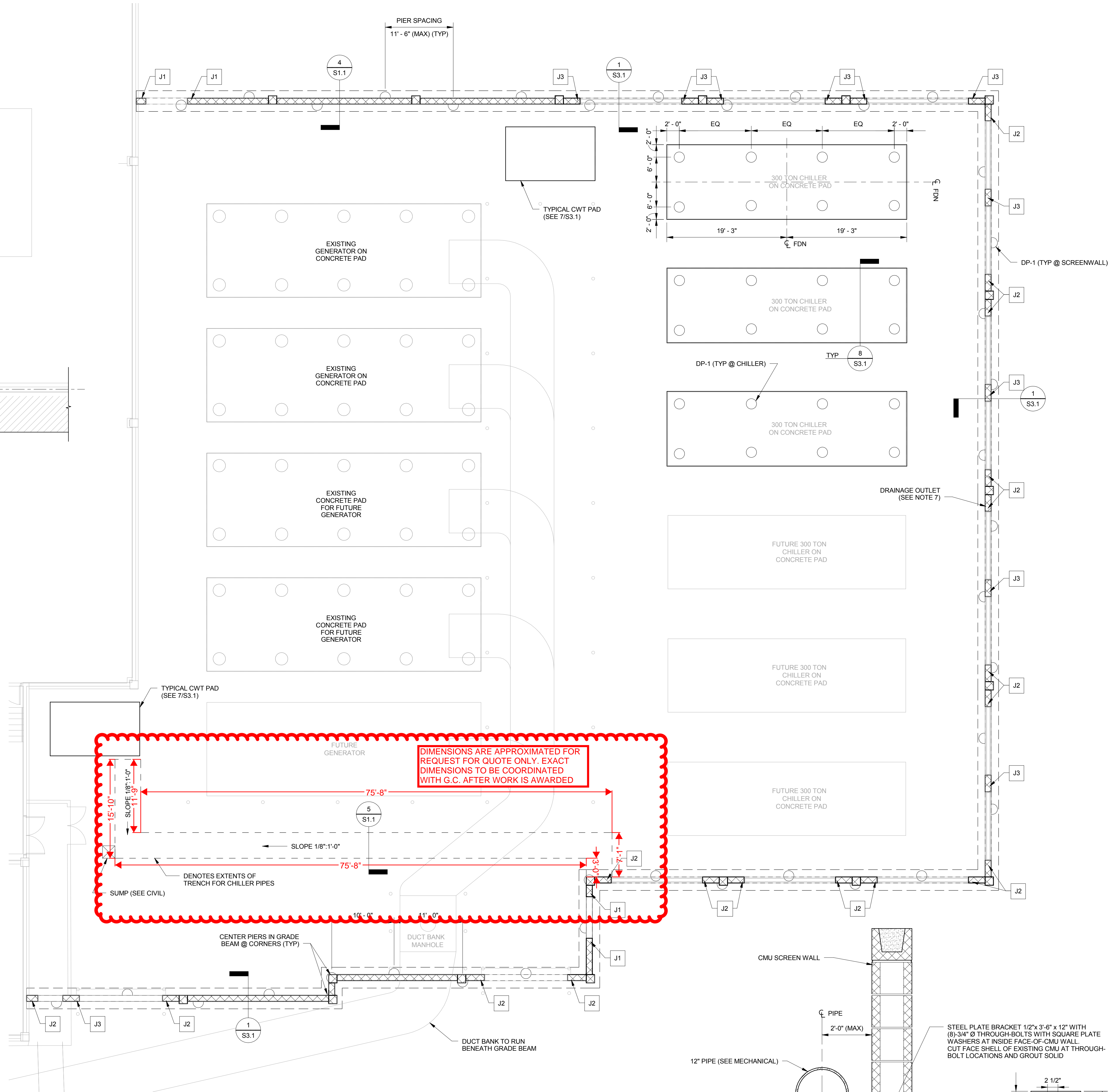
GENERATOR YEARD 3D PERSPECTIVE

(FOR REFERENCE ONLY)



SECTION

SCALE: 1" = 1'-0"



GENERATOR YARD PLAN

SCALE: 1/8" = 1'-0"

NOTES:

- J# DENOTES MASONRY JAMB REINFORCING MARK (SEE SCHEDULE).
- SEE 5/S3.1 FOR MASONRY PILASTER DETAILS.
- GC SHALL COORDINATE PLUMBING AND UTILITIES LOCATIONS WITH FOUNDATION AS NEEDED. ADDITIONALLY GC SHALL COORDINATE FOUNDATION ELEVATIONS WITH PLUMBING AND UTILITIES AS NEEDED. FORWARD ANY FOUNDATION LOCATION CHANGE REQUESTS TO STRUCTURAL ENGINEER OF RECORD FOR REVIEW AND APPROVAL.
- SEE ARCH FOR DRAINAGE OUTLET LOCATIONS AND MASONRY LINTEL & JAMB SCHEDULE ON S0.2 FOR REINFORCING REQUIREMENTS.
- NO FOUNDATION/PIERS SHALL BE POURED UNTIL A GEOTECHNICAL ENGINEER HAS REVIEWED AND VERIFIED THAT THE PIERS ARE ADEQUATE TO SUPPORT WEIGHT OF GENERATOR (GC TO PROVIDE GENERATOR SPECIFICATIONS).
- ALL PIERS TO BE DP-1 (UNLESS NOTED OTHERWISE). SEE SCHEDULE AND 10/S3.1 FOR TYPICAL DETAILS AND 9/S3.1 FOR TYP PIER LAYOUT.
- GENERATOR WEIGHT APPROXIMATELY 150,000 LBS.
- CHILLER WEIGHT APPROXIMATELY 40,000 LBS.

MASONRY JAMB SCHEDULE

TAG	REINFORCING
J1	1 CELL W/ (2) - #6
J2	2 CELLS W/ (2) - #6 PER CELL
J3	4 CELLS W/ (2) - #6 PER CELL

DRILLED PIER SCHEDULE

Type Mark	Diameter (in)	Bell Diameter (in)	VERT. REINF
DP-1	20	40	(6) - #6
DP-2	24	48	(7) - #6

NOTES:

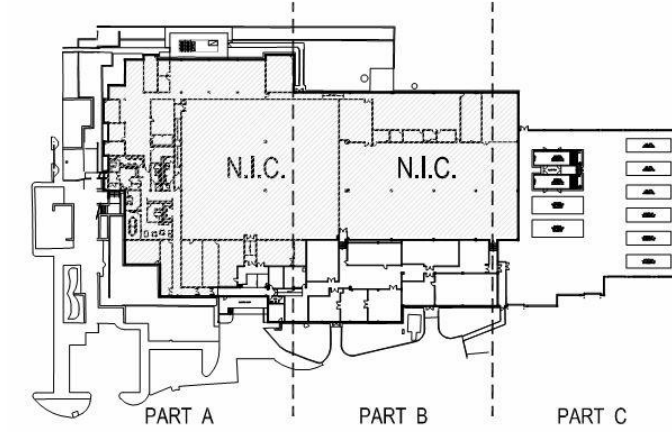
- GC TO COORDINATE ELEVATION OF BRACKET WITH PIPE ELEVATIONS
- SEE MECHANICAL DRAWINGS FOR BRACKET SPACING (10'-0" OC MAX)
- ALL EXPOSED STEEL SHALL BE GALVANIZED

SECTION

SCALE: 1" = 1'-0"

PES STRUCTURAL ENGINEERS

ADDRESS 1852 Century Place NE, Suite 201, Atlanta, Georgia 30345
PHONE 770.457.5923 FAX 770.457.9989 WEB www.pesengineers.com
PES PROJECT NUMBER: 0216043



Carlson Walbridge
A Walbridge Group Company

Carlson Walbridge, LLC
14901 Quorum Drive, Suite 595
Dallas, TX 75254
www.carlson-dc.com
Tel: 972.250.3972 Fax: 972.233.7575

zayo

**Dallas
Phase 2**

1100 EMPIRE CENTRAL PLACE
DALLAS, TX 75247

Number	Description	Date
	ISSUE FOR PERMIT	12/07/16



**GENERATOR YARD
FOUNDATION PLAN &
DETAILS**

S1.1

Project Number 15-20-155701

ZAYO DALLAS PHASE 2
1100 EMPIRE CENTRAL PLACE, DALLAS, TX 75247