

# Liberty Catwalks

A Division of Liberty Products,LLC

Splice Information Sheet	
Model or Series:	Liberty Series
Lifting Information Sheet	

Bridge Design Criteria:

- All design stresses are in accordance with the specifications of The Aluminum Association, Specifications and Guidelines for Aluminum Structures, latest edition.
- Welding to conform with the American Welding Society D1.2 latest revision. Welding to be performed by experienced welders qualified in accordance with A.W.S. procedures.
- Aluminum to be 6061-T6 with minimum yield strength of 35,000 psi or 6063 (Decking).
- Anchor Bolts to be stainless steel type 316.
- Hand rails and all other accessible surfaces to be ground smooth with no sharp edges or corners.
- Length of anchor bolts and foundation details are for general arrangement purposes only. Actual foundation and substructure design, railing, camber, and slope requirements, electrical grounding, and clearances (flood plain, roadway, and waterway) are the responsibility of others.
- Structural welds will be a minimum of 3/16" fillet unless shown otherwise. Minimum weld does not apply to seal welds.
- 1/2" Tolerance for Warping and Distortion possible while heating or welding. Adjust in shop as required.

Design Based on Following:


- Dead Load: 17 psf
- Distributed Live Load: 90 psf
- Wind Load: 29 psf calculated on the entire vertical surface as though fully enclosed (115mph 700yr MRI)

Floor Design Information

GAL (19-S-4) Serrated Banded 1" x  $\frac{3}{16}$ " Grating.

A Approval Submittals		3/16/2022	
Rev	DESCRIPTION	BY/DATE	CHK'D BY

Mailing Address:  
Liberty Products, LLC  
PO Box 316, 187 Dutton Road  
Section, Alabama 35771  
Phone: 256-996-2342  
Fax: 800-869-0617



## Liberty Products

JOB:	EBS-4112	DRAWN BY:	BSD 3/16/2022
FDR:	East Tank 1 Rehab City of Folsom, California	APP'D BY:	
ADDRESS:	Riverside Generating Station Catwalk		
	Bettendorf, Iowa 52722		
ARCHITECT:		CHECKED BY:	
CONTRACTOR:	Attention: Bryan Vlasak Phone: 763-478-2027 Email: bryan@essbrothers.com		CME 3/16/2022
DESCRIPTION:	LIFTING AND INFORMATION SHEET		

THIS CATWALK STRUCTURE SHALL NOT BE FIELD MODIFIED IN ANY WAY WITHOUT PRIOR APPROVAL FROM LIBERTY PRODUCTS. THESE DRAWINGS AND DESIGNS ARE THE PROPERTY OF LIBERTY PRODUCTS, AND ARE NOT TO BE COPIED OR USED IN ANY WAY DETRIMENTAL WITHOUT THEIR WRITTEN CONSENT.

DRAWING #:

EBS-4112-Installation

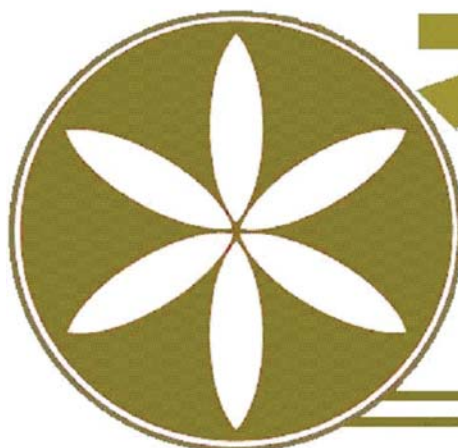
SHEET REV.











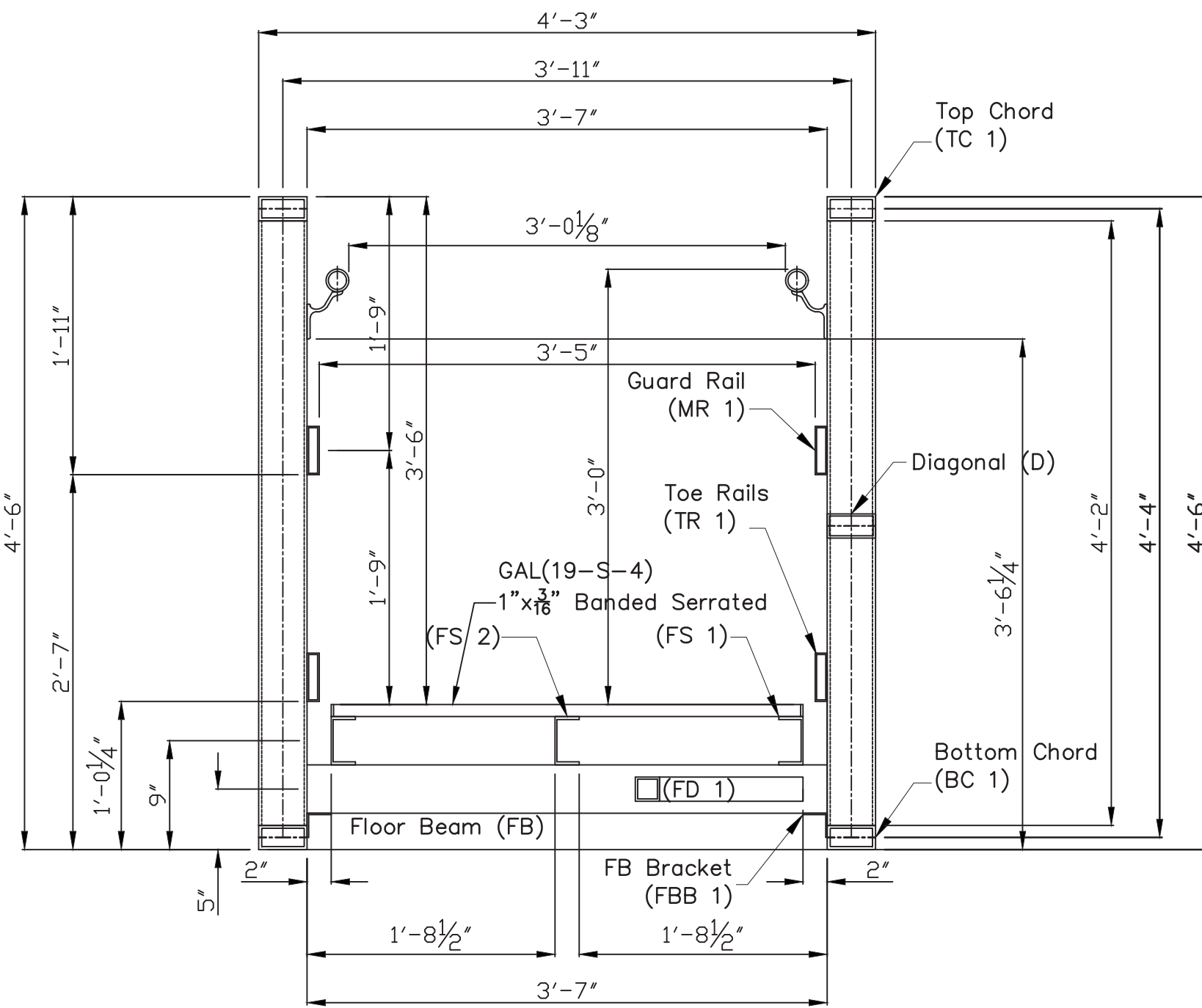
Liberty Catwalks

A Division of Liberty Products, LLC

Shop Procedures	Section Views
Model or Series:	Liberty Series
Span: 3'-0" x 25'-0"	Weld Procedures

Weld Procedures

Welds are typically for bridge and catwalk members. Members may vary per design requirements.



Section A-A

Scale: 1" = 1'-0"

CUSTOMER APPROVAL			
<input type="checkbox"/>	APPROVED		
<input type="checkbox"/>	APPROVED AS NOTED		
<input type="checkbox"/>	NOT APPROVED		
<input type="checkbox"/>	REVISE AND RESUBMIT		

Rev	DESCRIPTION	BY/DATE	CHK'D BY
A	Approval Submittals	3/16/2022	

Mailing Address:  
Liberty Products, LLC  
PO Box 316, 187 Dutton Road  
Section, Alabama 35771  
Phone: 256-996-2342  
Fax: 800-869-0617

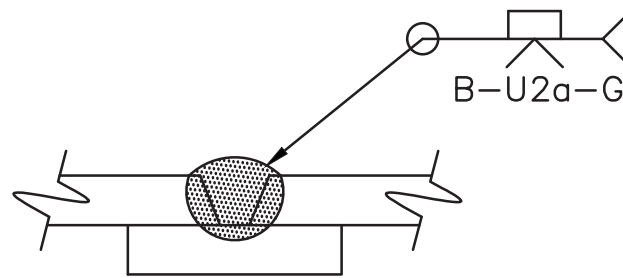


Liberty Products

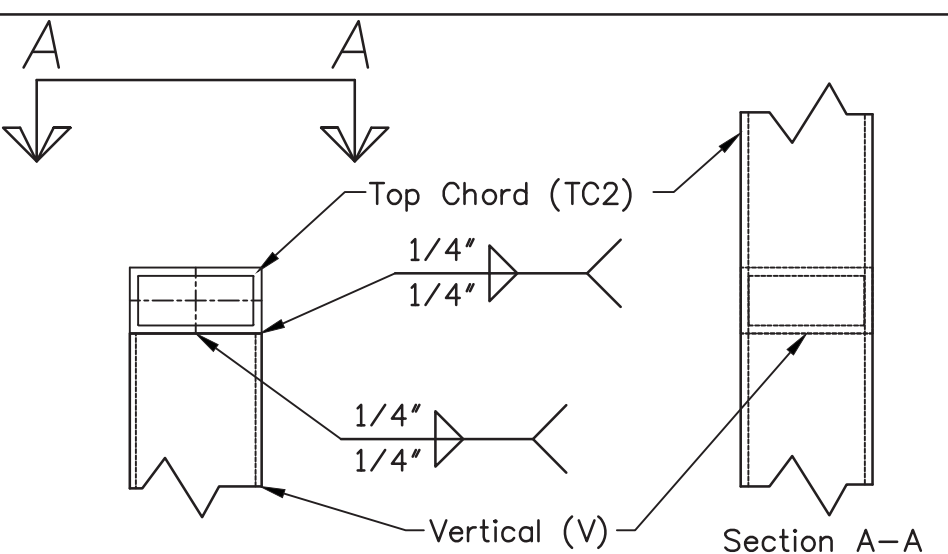
JOB:	EBS-4112	DRAWN BY:	BSD
FDR:	East Tank 1 Rehab City of Folsom, California	APP'D BY:	3/16/2022
ADDRESS:	Riverside Generating Station Catwalk	CHECKED BY:	
ARCHITECT:	Bettendorf, Iowa 52722	CME	3/16/2022
CONTRACTOR:	Attention: Bryan Vlasak Phone: 763-478-2027 Email: bryan@essbrothers.com		
DESCRIPTION:	Section Views, Weld Procedures, and Shop Procedures		

THIS CATWALK STRUCTURE SHALL NOT BE FIELD MODIFIED IN ANY WAY WITHOUT PRIOR APPROVAL FROM LIBERTY PRODUCTS. THESE DRAWINGS AND DESIGNS ARE THE PROPERTY OF LIBERTY PRODUCTS, AND ARE NOT TO BE COPIED OR USED IN ANY WAY DETRIMENTAL WITHOUT THEIR WRITTEN CONSENT.

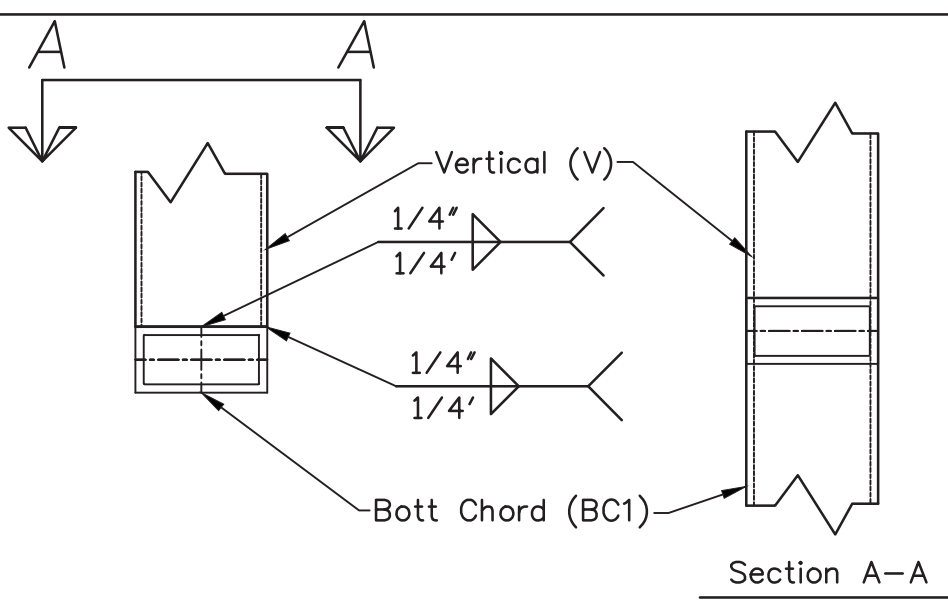
DRAWING # EBS-4112 Sheet 2 of 3 SHEET REV.



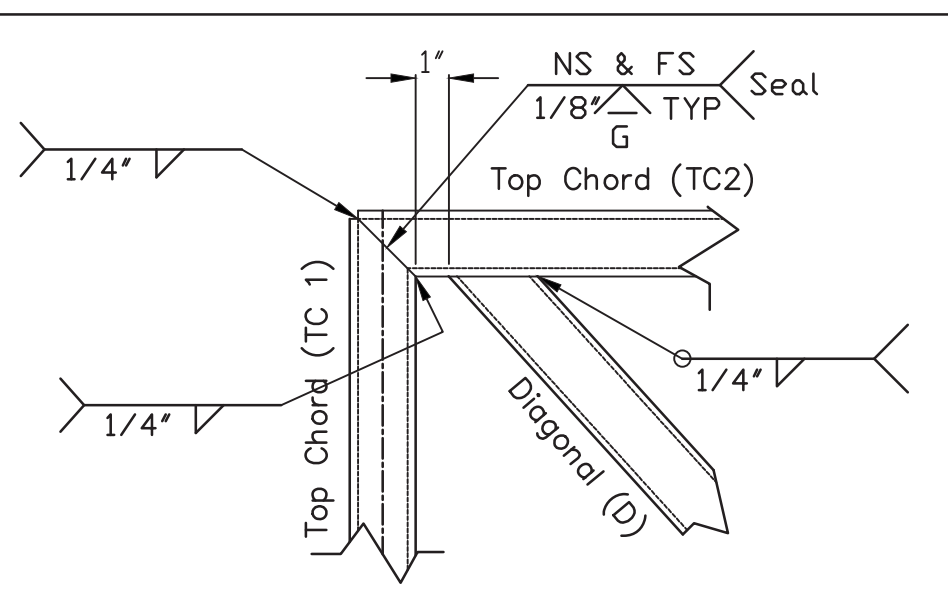
Type: All Models	Top Chord and Bottom Chord Shop Splice Detail	Standard Shop Procedure #
Process: AWS D1.2		
Filler Wire: 5356		STD-Chord Splice
Positions: ALL		



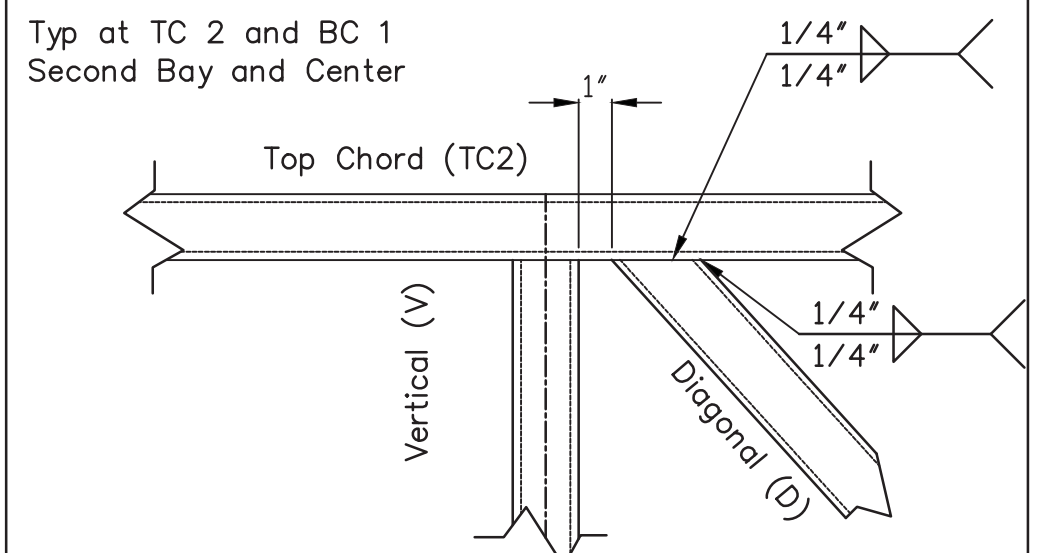
Type: Liberty Series	Top Chord to Vertical Connection Detail	Standard Shop Procedure #
Process: AWS D1.2		
Filler Wire: 5356	Tube Members are of Equal Width	STD-TC1-V-2
Positions: ALL		



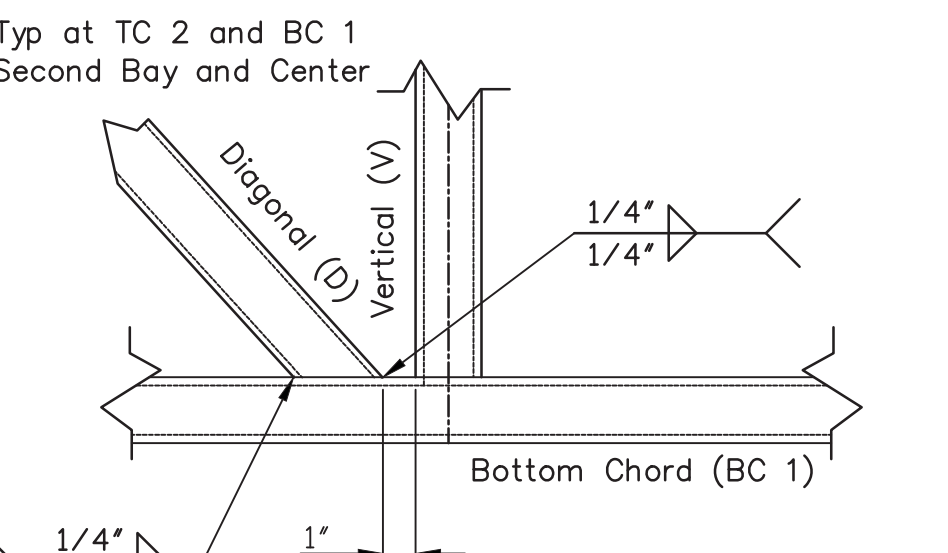
Type: Liberty Series	Bott Chord to Vertical Connection Detail	Standard Shop Procedure #
Process: AWS D1.2		
Filler Wire: 5356	Tube Members are of Equal Width	STD-BC1-V-2
Positions: ALL		



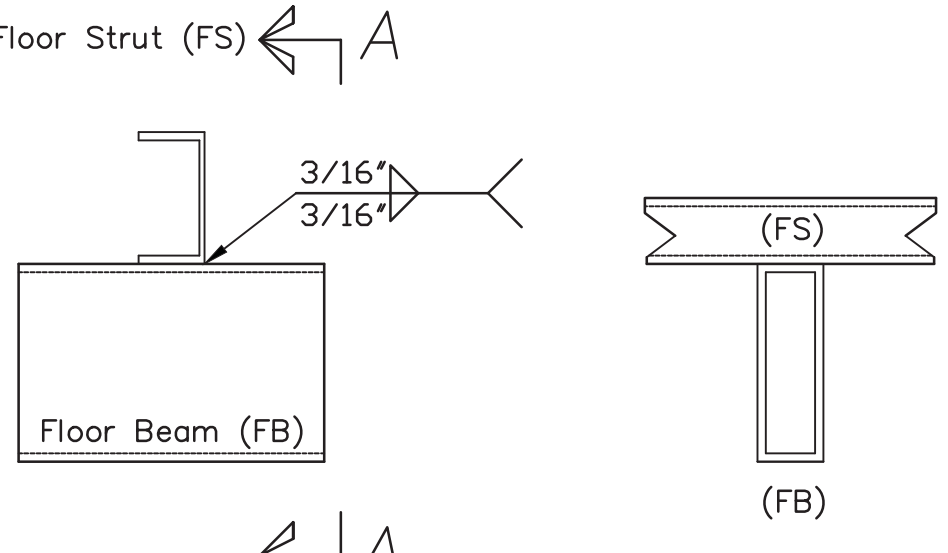
Type: Liberty Series	Top Chord to Diagonal Connection Detail	Standard Shop Procedure #
Process: AWS D1.2		
Filler Wire: 5356	Tube Members are of Equal Width	STD-TC1-TC2-D-2
Positions: ALL		



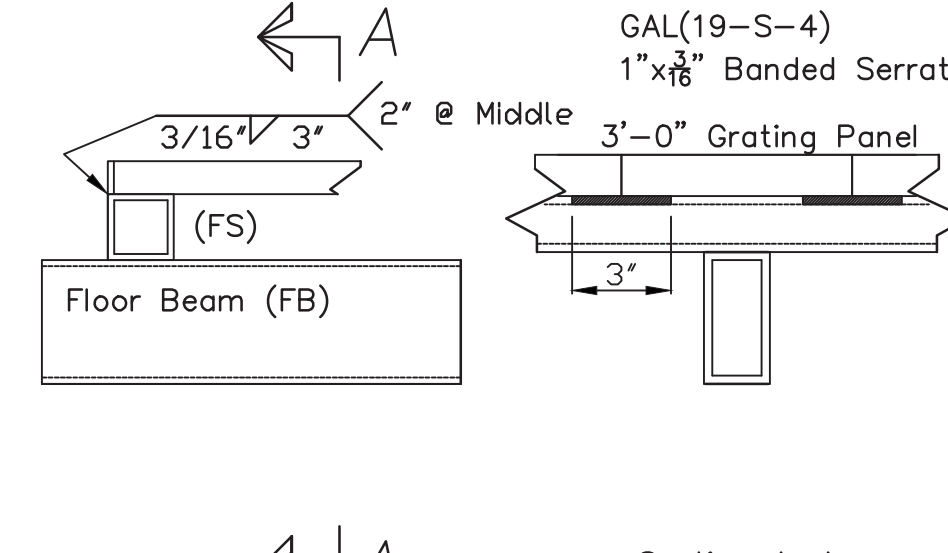
Type: Liberty Series	Diagonal to Vertical and Top Chord Connection	Standard Shop Procedure #
Process: AWS D1.2		
Filler Wire: 5356	Tube Members are of Equal Width	STD-TC2-D-2
Positions: ALL		



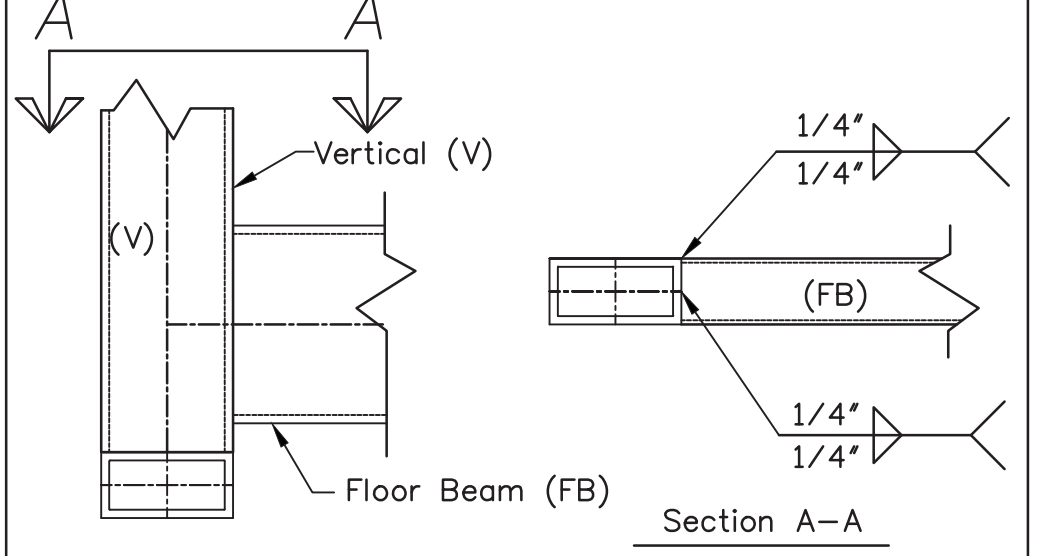
Type: Liberty Series	Gapped Diagonal to Bott Chord Connection	Standard Shop Procedure #
Process: AWS D1.2		
Filler Wire: 5356	Tube Members are of Equal Width	STD-BC1-D-2
Positions: ALL		



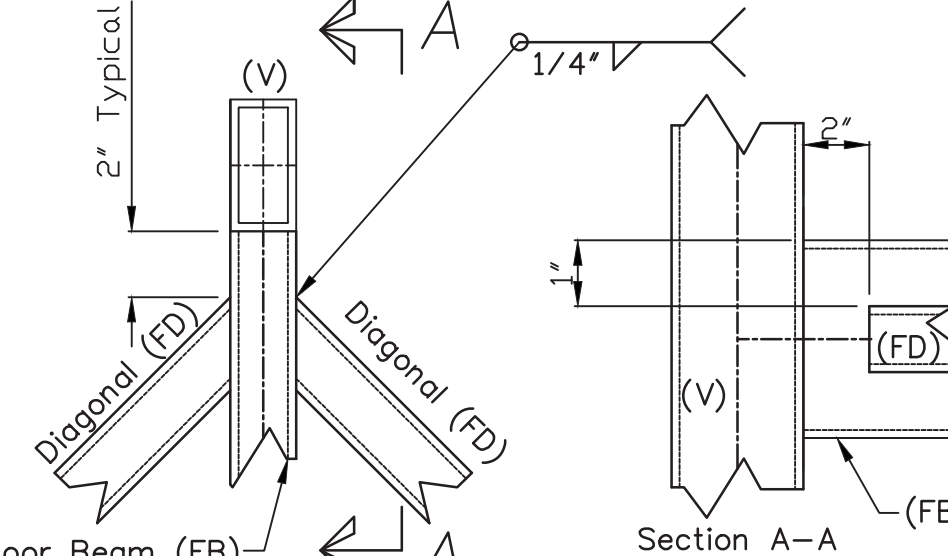
Type: Liberty Series	Floor Strut(FS) to Floor Beam(FB)	Standard Shop Procedure #
Process: AWS D1.2		
Filler Wire: 5356	(FS) Channel to (FB) Tube	STD-FST-FBT-1
Positions: ALL		



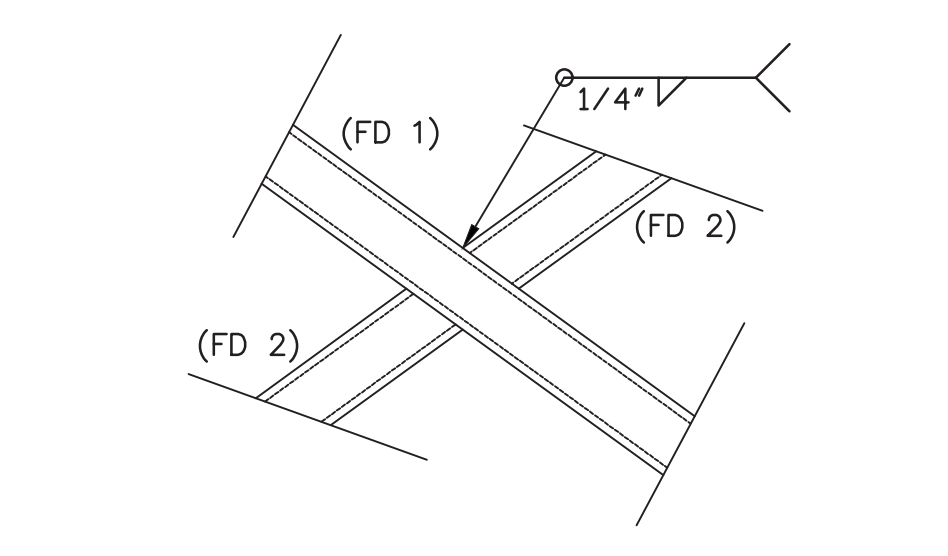
Type: Liberty Series	Floor Strut(FS) to Floor Beam(FB)	Standard Shop Procedure #
Process: AWS D1.2		
Filler Wire: 5356	(FS) Channel to (FB) Tube	STD-FST-FBT-1
Positions: ALL		



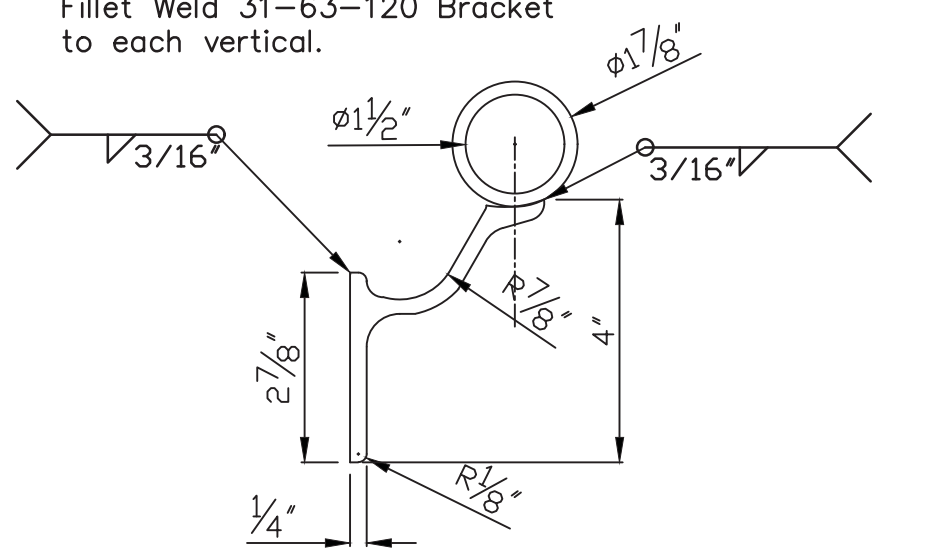
Type: Liberty Series	Tube Floor Beam (FB) to Vertical (V)	Standard Shop Procedure #
Process: AWS D1.2		
Filler Wire: 5356	Vertical (V) and Floor Beam (FB) same size	STD-FBT-V-1
Positions: ALL		



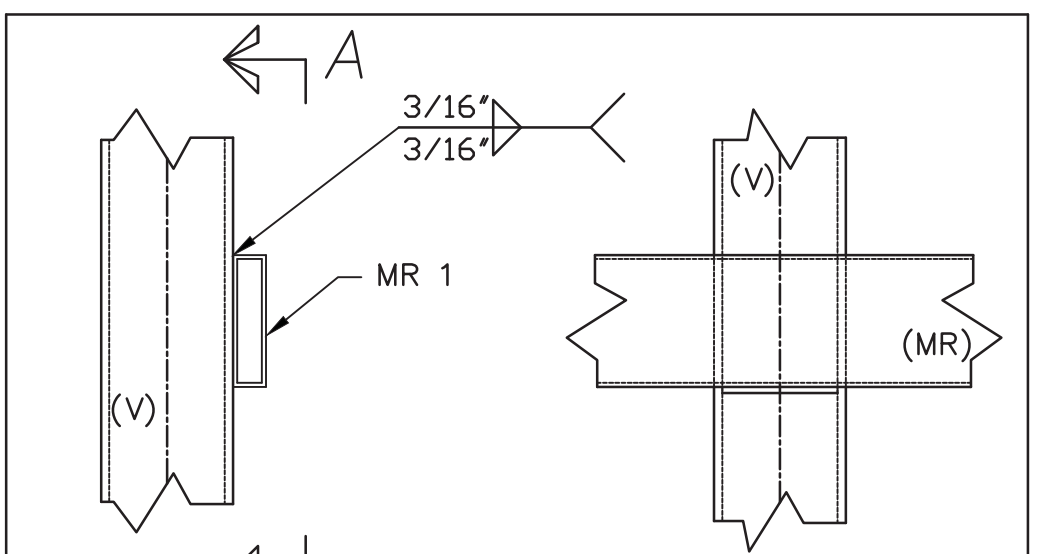
Type: Liberty Series	Floor Diagonal (FD) to Floor Beam (FB)	Standard Shop Procedure #
Process: AWS D1.2		
Filler Wire: 5356	Tube (FD) to Tube Floor Beam (FB)	STD-FDT-FBT-1
Positions: ALL		



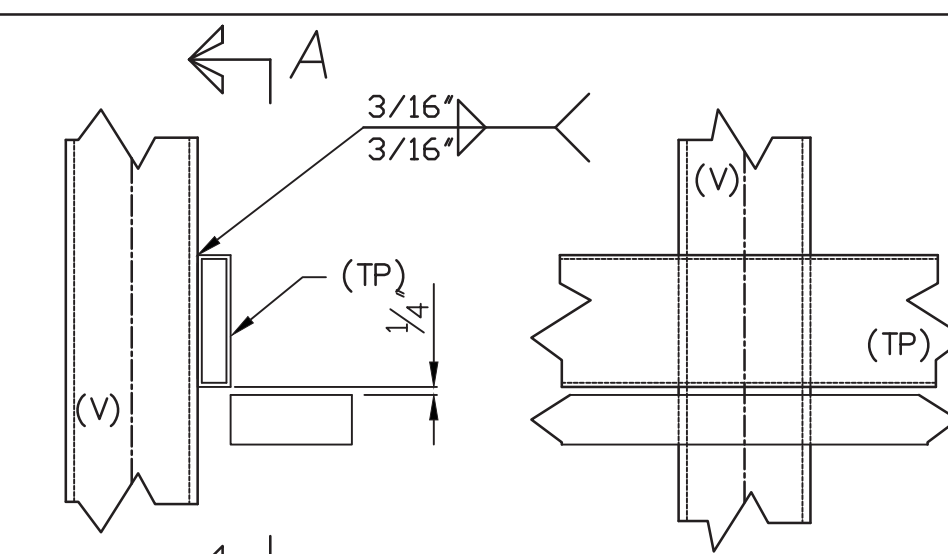
Type: Liberty Series	Floor Diagonal (FD) to Floor Diagonal (FD)	Standard Shop Procedure #
Process: AWS D1.2		
Filler Wire: 5356	Tube (FD) to Tube Floor Diagonal (FD)	STD-FDT-FDT-1
Positions: ALL		



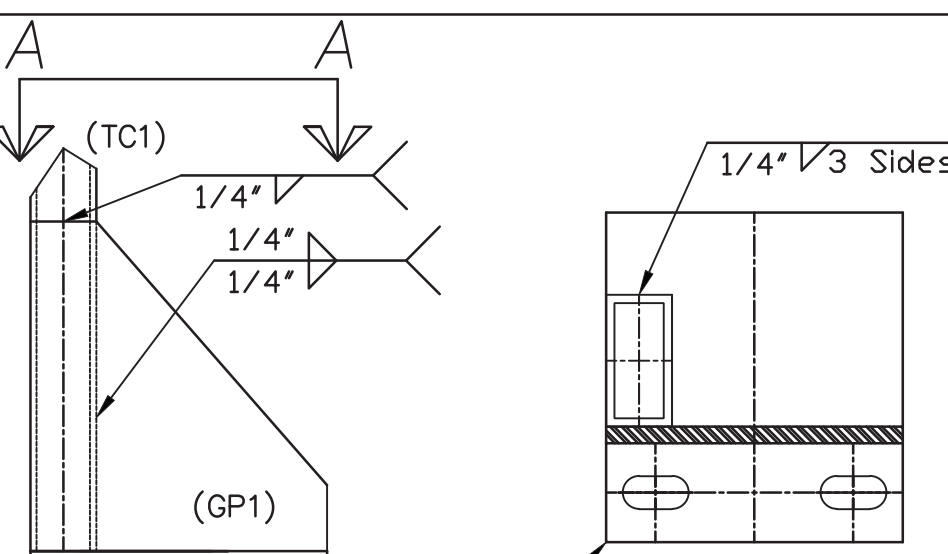
Type: Liberty Series	Handrail Bracket (HBR) to Floor Beam (FB)	Standard Shop Procedure #
Process: AWS D1.2		
Filler Wire: 5356	Handrail Bracket (HBR) to Floor Beam (FB)	STD-HR1-EMS-3163-120
Positions: ALL		



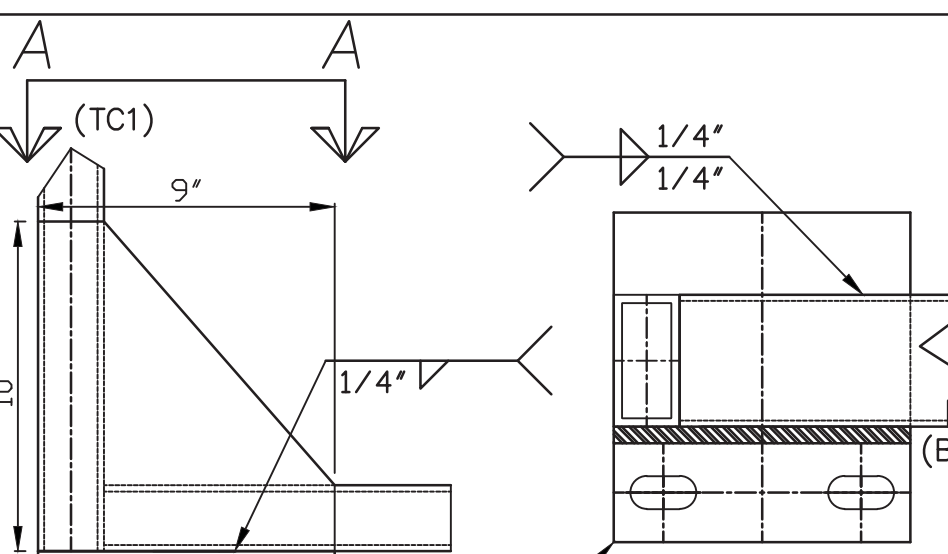
Type: Liberty Series	Mid Rail (MR) to Vertical (V)	Standard Shop Procedure #
Process: AWS D1.2		
Filler Wire: 5356	Tube (TP) to Tube	STD-MRT-V-1
Positions: ALL		



Type: Liberty Series	Toe Plate (TP) to Vertical (V)	Standard Shop Procedure #
Process: AWS D1.2		
Filler Wire: 5356	Tube (TP) to Tube Vertical (V)	STD-TPT-V-1
Positions: ALL		



Type: Liberty Series	(TC1) to (GP1) at (BP1) Bearing	Standard Shop Procedure #
Process: AWS D1.2		
Filler Wire: 5356		STD-TCE1-GP1-BP1
Positions: ALL		



Type: Liberty Series	(BP1) to (GP1) at (TC1) Bearing	Standard Shop Procedure #
Process: AWS D1.2		
Filler Wire: 5356		STD-TCE1-GP1-BP1
Positions: ALL		

Top Chord, Bottom Chord, Vertical and Diagonal Weld Procedures



