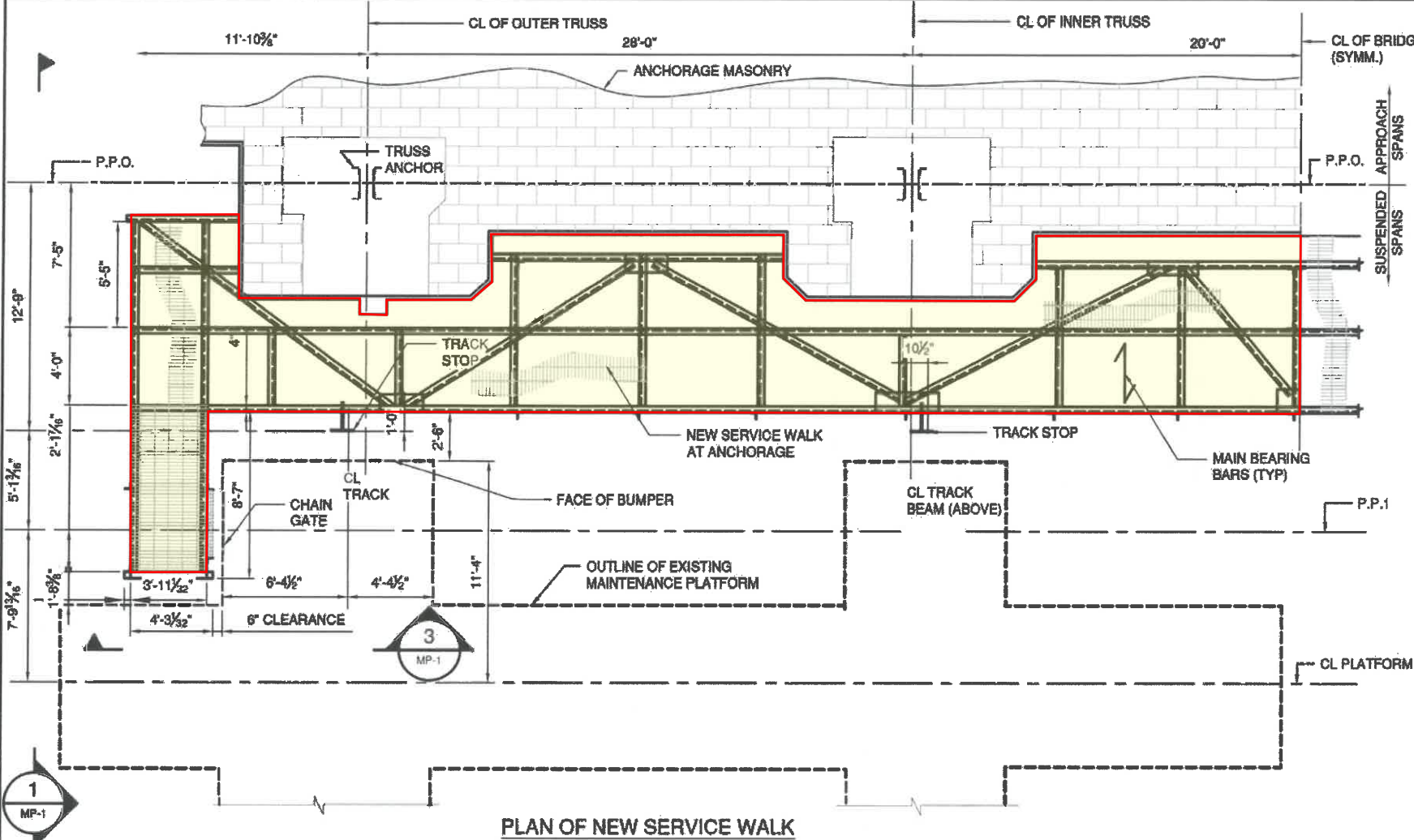
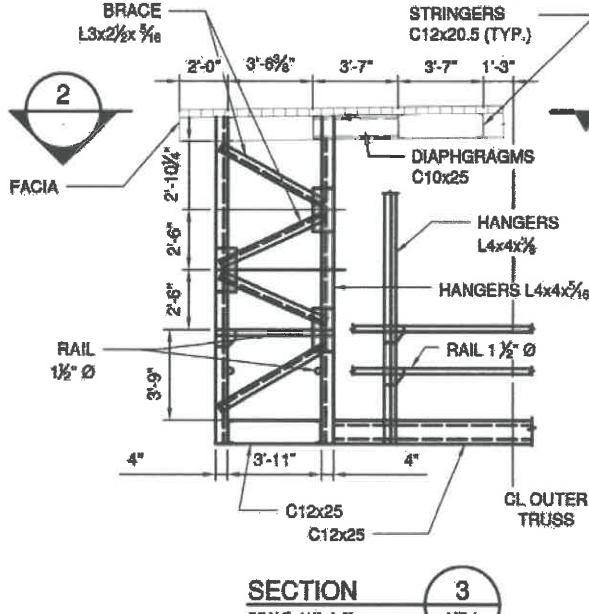
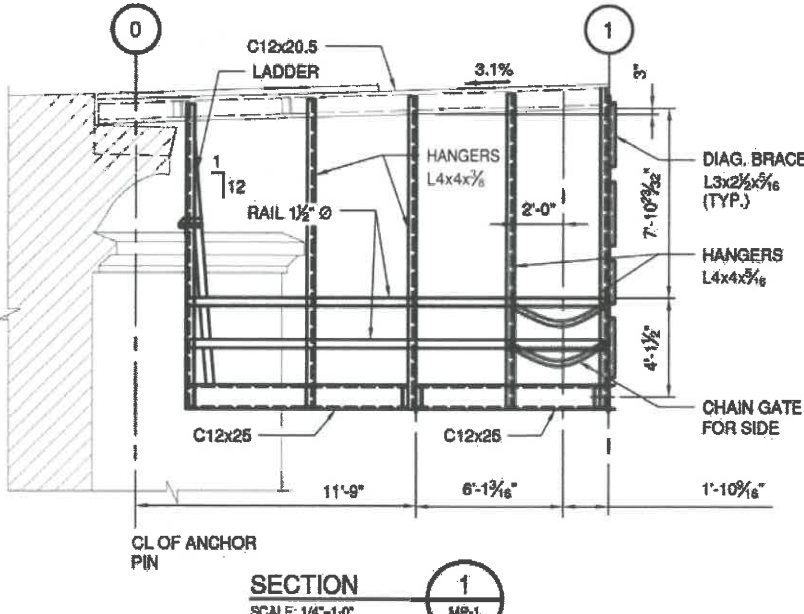
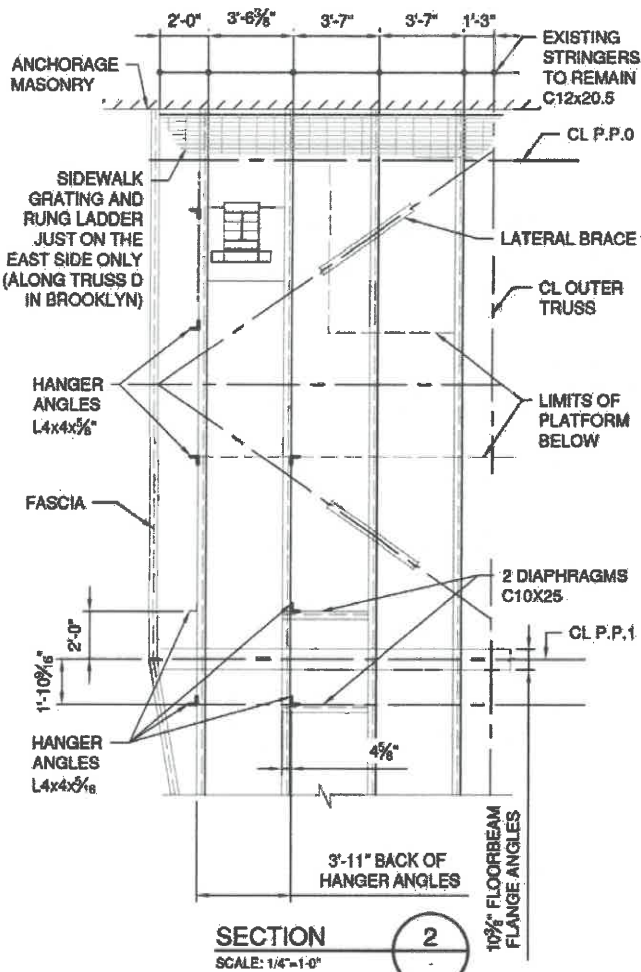


| SHEET NO. | TOTAL SHEETS |
|-----------|--------------|
| 119       | 218          |



PLAN OF NEW SERVICE WALK



- NOTES:
- FOR GENERAL NOTES SEE DWG NOS G-6 THRU G-8.
  - ALL NEW STRUCTURAL STEEL ON MP DRAWING SHALL CONFORM TO ASTM A709 GRADE 50, GALVANIZED UN.
  - UNLESS OTHERWISE INDICATED, ALL HS BOLTS SHALL BE 3/4" DIA AND GALVANIZED.
  - OPEN STEEL FLOOR GRATING SHALL BE GALVANIZED IN ACCORDANCE WITH THE REQUIREMENTS OF 719-01 GALVANIZED COATINGS AND REPAIR METHODS OF THE STANDARD SPECIFICATIONS.
  - ALL EXISTING DIMENSION AND LAYOUT OF WORK PLATFORM SHALL BE FIELD VERIFIED PRIOR TO PREPARING SHOP DRAWINGS.
  - HANGERS AT TOP SHALL BE CONNECTED TO THE EXISTING CONNECTION PLATES.
  - THE SPACING BETWEEN HANGERS SHALL NOT EXCEED 21 FEET.
  - FABRICATION AND INSTALLATION OF NEW PLATFORM SHALL BE PAID UNDER ITEM 564.510002.
  - STEEL PLATFORM GRATING SHALL BE PAID UNDER ITEM 565.01.
  - FOR GRATING SIZE AND DETAILS, SEE DWG NO MP-3.

PREPARED BY

ALTERED BY

WEIDLINGER ASSOCIATES, INC.

40 WALL STREET  
NEW YORK, NY 10005

PREPARED BY

IN CHARGE S. SUMMERVILLE DRAFTER D. GRIGOROVA

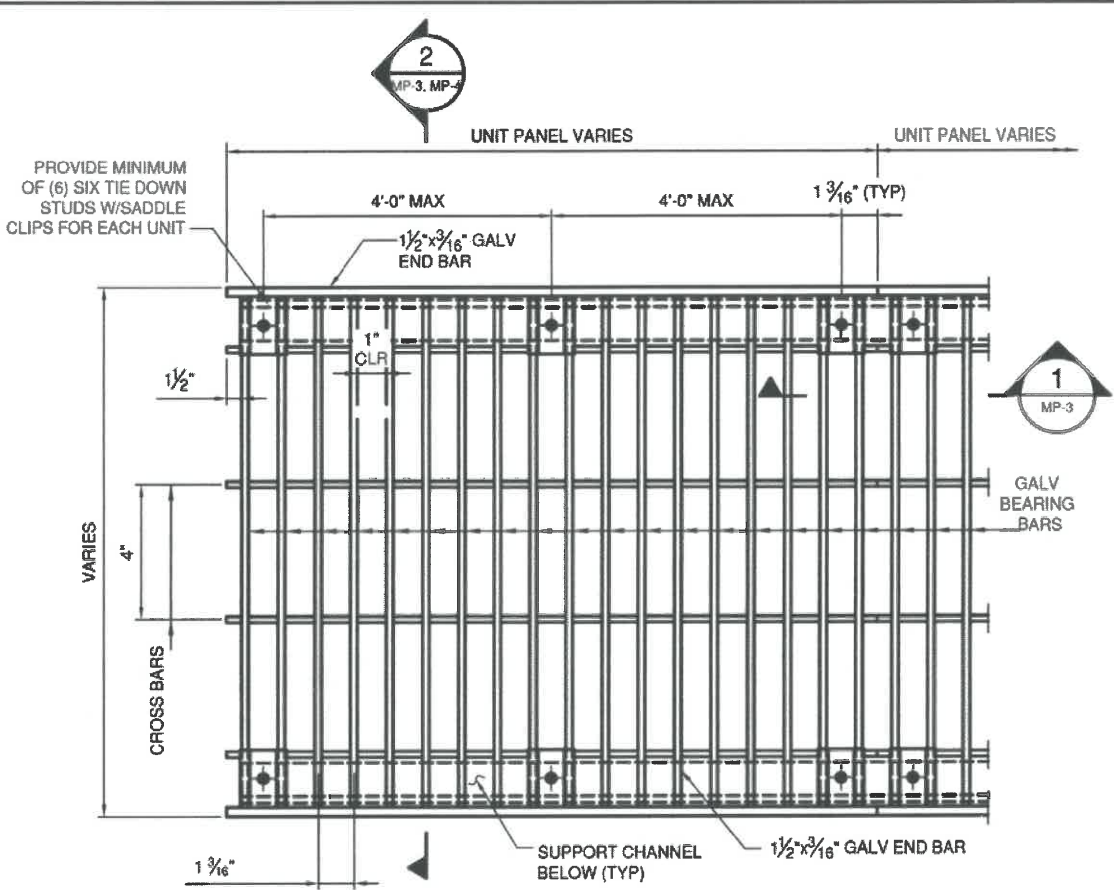
DESIGNER C. MAUCH CHECKER C. MAUCH



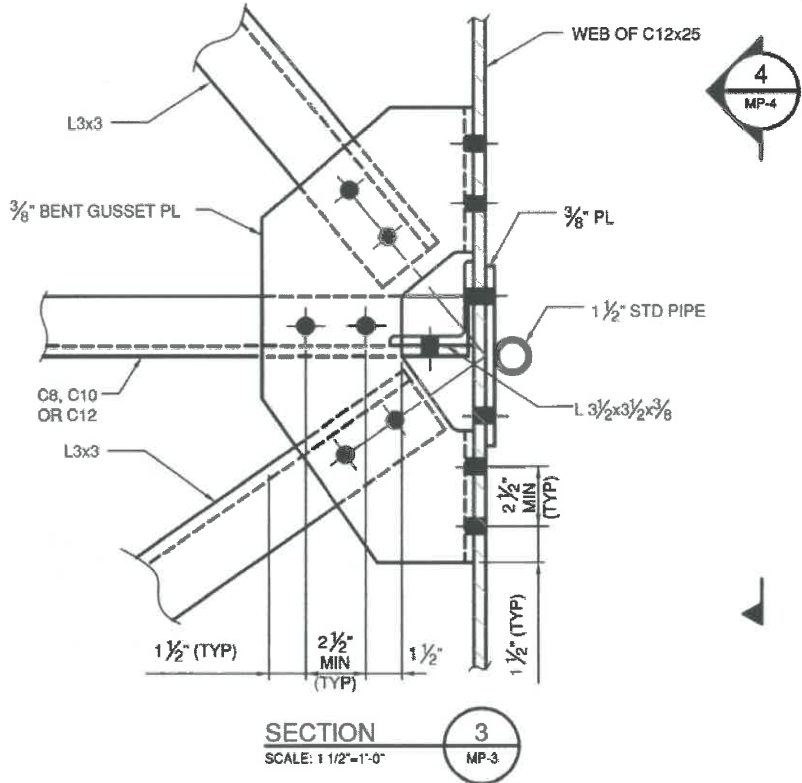
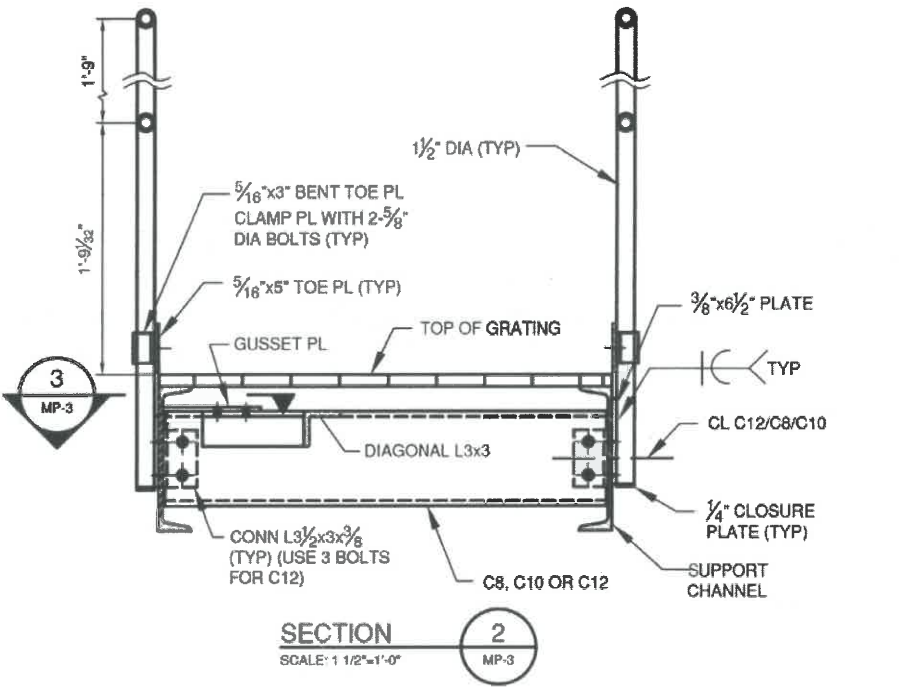
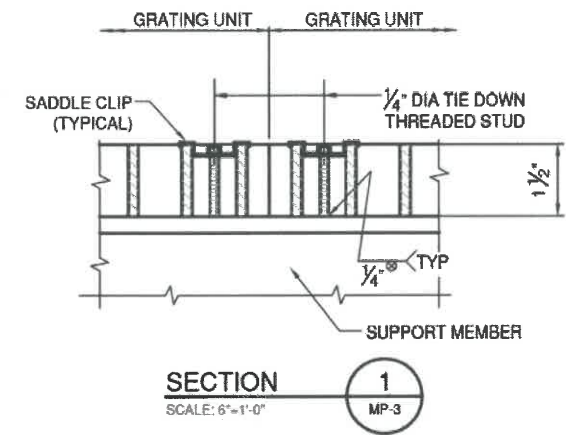
IT IS A VIOLATION OF LAW FOR ANY PERSON, UNLESS THEY ARE ACTING UNDER THE DIRECTION OF A LICENSED PROFESSIONAL ENGINEER, ARCHITECT, LANDSCAPE ARCHITECT, OR LAND SURVEYOR, TO ALTER AN ITEM IN ANY WAY. IF AN ITEM BEARING THE STAMP OF A LICENSED PROFESSIONAL IS ALTERED, THE ALTERING ENGINEER, ARCHITECT, LANDSCAPE ARCHITECT, OR LAND SURVEYOR SHALL STAMP THE DOCUMENT AND INCLUDE THE NOTATION "ALTERED BY" FOLLOWED BY THEIR SIGNATURE, THE DATE OF SUCH ALTERATION, AND A SPECIFIC DESCRIPTION OF THE ALTERATION.

| CITY OF NEW YORK<br>DEPARTMENT OF TRANSPORTATION<br>DIVISION OF BRIDGES |              |                                   |           |
|-------------------------------------------------------------------------|--------------|-----------------------------------|-----------|
| NYS P.I.N. NO.                                                          | X772.84      | FED. AID PROJ. NO.<br><br>X772844 |           |
| NYC P.I.N. NO.                                                          | 04117MBBR134 |                                   |           |
| CONTRACT NO.                                                            | BRC156F      | CD NO.                            | 128       |
| STRUCTURAL AND COMPONENT<br>REHABILITATION OF MANHATTAN BRIDGE          |              |                                   |           |
| BOROUGH OF MANHATTAN & BROOKLYN                                         |              | B.I.N. 2-24002-7.8                |           |
| ANCHORAGE MAINTENANCE PLATFORM<br>REHABILITATION NEW PLAN AND SECTIONS  |              |                                   |           |
| DWG. NO.                                                                | SCALE        | DATE                              | SHEET NO. |
| MP-2                                                                    | AS SHOWN     | JAN 2018                          | 119       |

| SHEET NO. | TOTAL SHEETS |
|-----------|--------------|
| 120       | 218          |



TYPICAL GRATING PLAN  
SCALE: 1 1/2"=1'-0"



- NOTES:
- FOR NOTES, SEE DWG NO MP-2.
  - UNLESS OTHERWISE NOTED, ALL STEEL GRATING SHALL BE WELDED RECTANGULAR DESIGN AND MAIN BEARING BARS SHALL BE 1 1/2"x 3/16" SPACED AT 1 3/8" CENTER TO CENTER, CROSS BARS SHALL BE RESISTANCE WELDED TO THE BEARING BARS AND SPACED AT 4" CENTER TO CENTER.
  - ALL STEEL GRATING SHALL BE ASTM A709 GR36 HOT DIPPED GALVANIZED IN ACCORDANCE WITH THE SPECIFICATIONS.

PREPARED BY

ALTERED BY

WEIDLINGER ASSOCIATES, INC.

40 WALL STREET  
NEW YORK, NY 10005

PREPARED BY

IN CHARGE S. SUMMERVILLE    DRAFTER D. GRIGOROVA  
DESIGNER C. MAUCH                      CHECKER C. MAUCH

IT IS A VIOLATION OF LAW FOR ANY PERSON, UNLESS THEY ARE ACTING UNDER THE DIRECTION OF A LICENSED PROFESSIONAL ENGINEER, ARCHITECT, LANDSCAPE ARCHITECT, OR LAND SURVEYOR, TO ALTER AN ITEM IN ANY WAY. IF AN ITEM BEARING THE STAMP OF A LICENSED PROFESSIONAL IS ALTERED, THE ALTERING ENGINEER, ARCHITECT, LANDSCAPE ARCHITECT, OR LAND SURVEYOR SHALL STAMP THE DOCUMENT AND INCLUDE THE NOTATION "ALTERED BY" FOLLOWED BY THEIR SIGNATURE, THE DATE OF SUCH ALTERATION, AND A SPECIFIC DESCRIPTION OF THE ALTERATION.

CITY OF NEW YORK

DEPARTMENT OF TRANSPORTATION

DIVISION OF BRIDGES

NYS P.I.N. NO.    X772.84

NYC P.I.N. NO.    84117MBBR134

CONTRACT NO.    BRC156F

FED. AID PROJ. NO.

X772844

CD NO.    I28

STRUCTURAL AND COMPONENT

REHABILITATION OF MANHATTAN BRIDGE

BOROUGH OF MANHATTAN & BROOKLYN    B.I.N. 2-24002-7.8

ANCHORAGE MAINTENANCE PLATFORM

REHABILITATION TYPICAL DETAILS - 1

DWG. NO.

MP-3

SCALE

AS SHOWN

DATE

JAN 2018

SHEET NO.

120