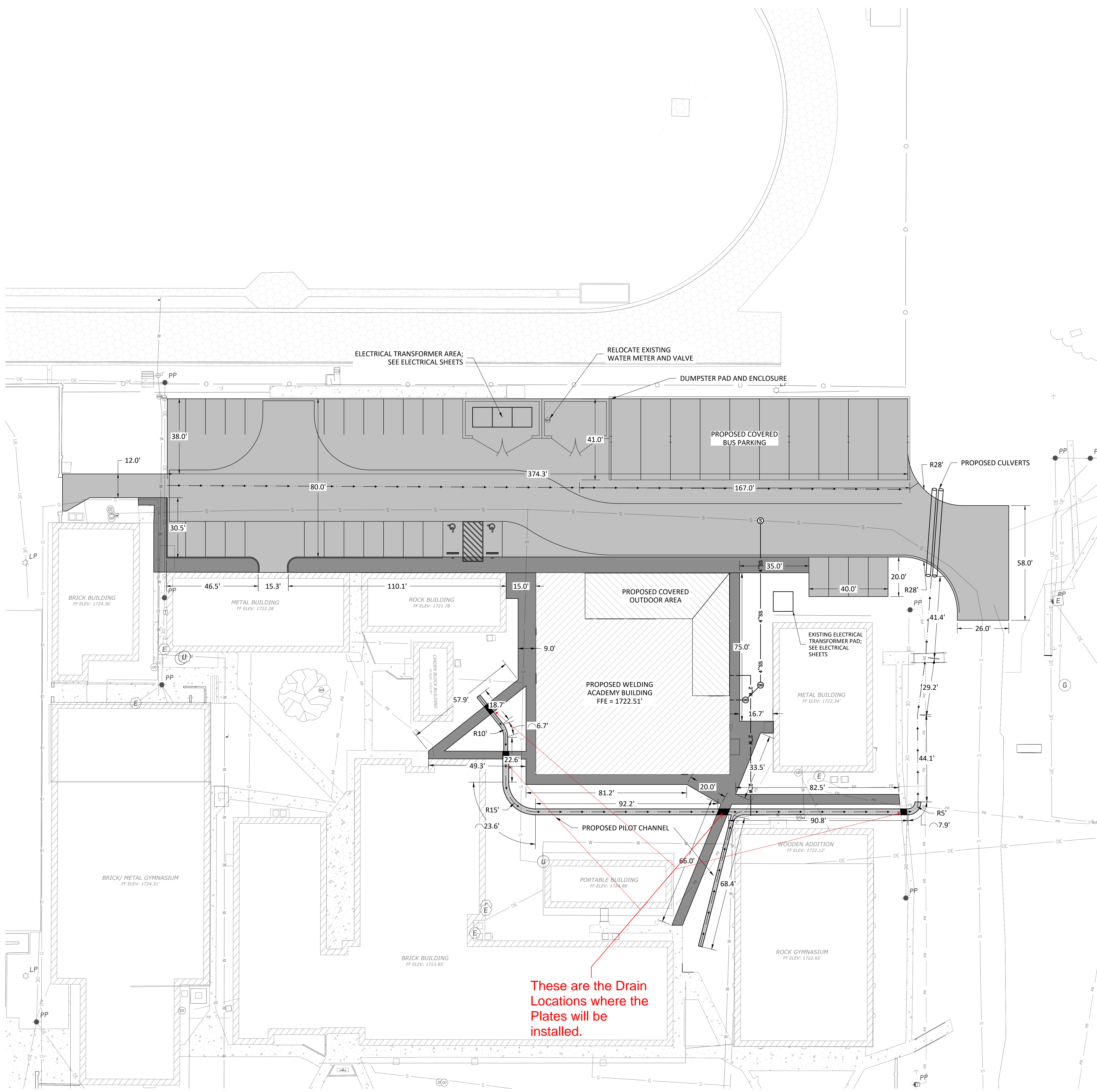


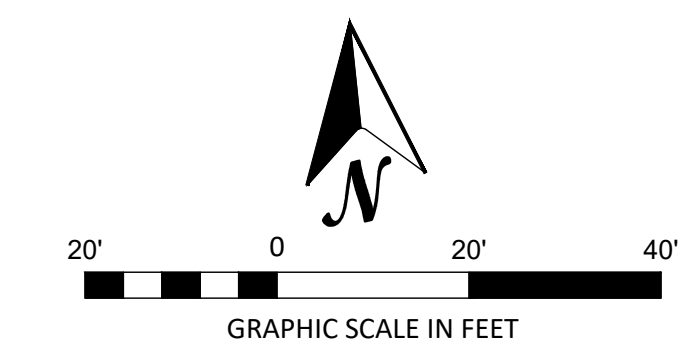
BIDDING ADDENDUM No. 3 PLAN SET

BAIRD ISD WELDING ACADEMY

600 W 7TH STREET, BAIRD, TX 79504

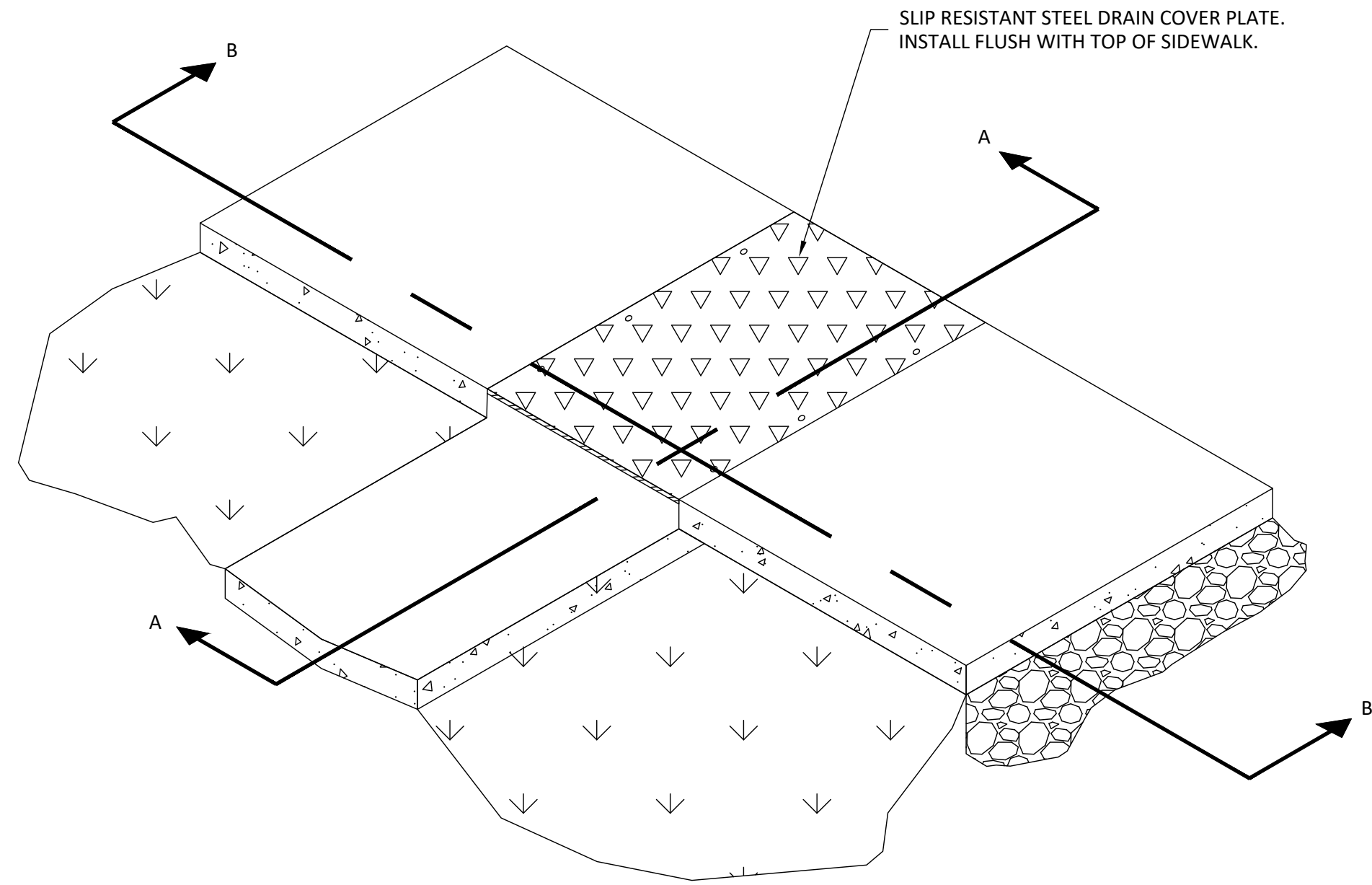


These are the Drain Locations where the Plates will be installed.

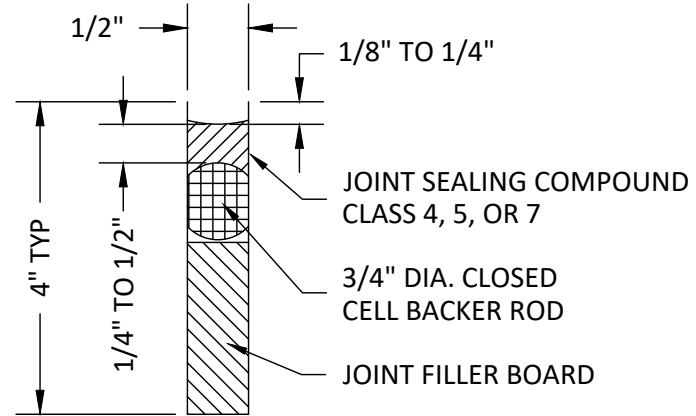


LEGEND	
	PROPOSED BUILDING
	PROPOSED CONCRETE PAVING
	PROPOSED CONCRETE SIDEWALK
	PROPOSED CONCRETE PILOT CHANNEL
	PROPOSED FLOW LINE
	PROPOSED 2" WATER SERVICE LINE
	PROPOSED 4" SANITARY SEWER SERVICE LINE
	PROPOSED SANITARY MANHOLE
	PROPOSED SANITARY CLEAN OUT
	EXISTING BUILDING
	EXISTING CONCRETE SIDEWALK
	EXISTING ASPHALT PAVEMENT
	EXISTING GRAVEL PARKING AREA
	EXISTING ATHLETIC TRACK
	EXISTING WATER LINE
	EXISTING SANITARY SEWER
	EXISTING FENCE LINE
	EXISTING OVERHEAD ELECTRIC

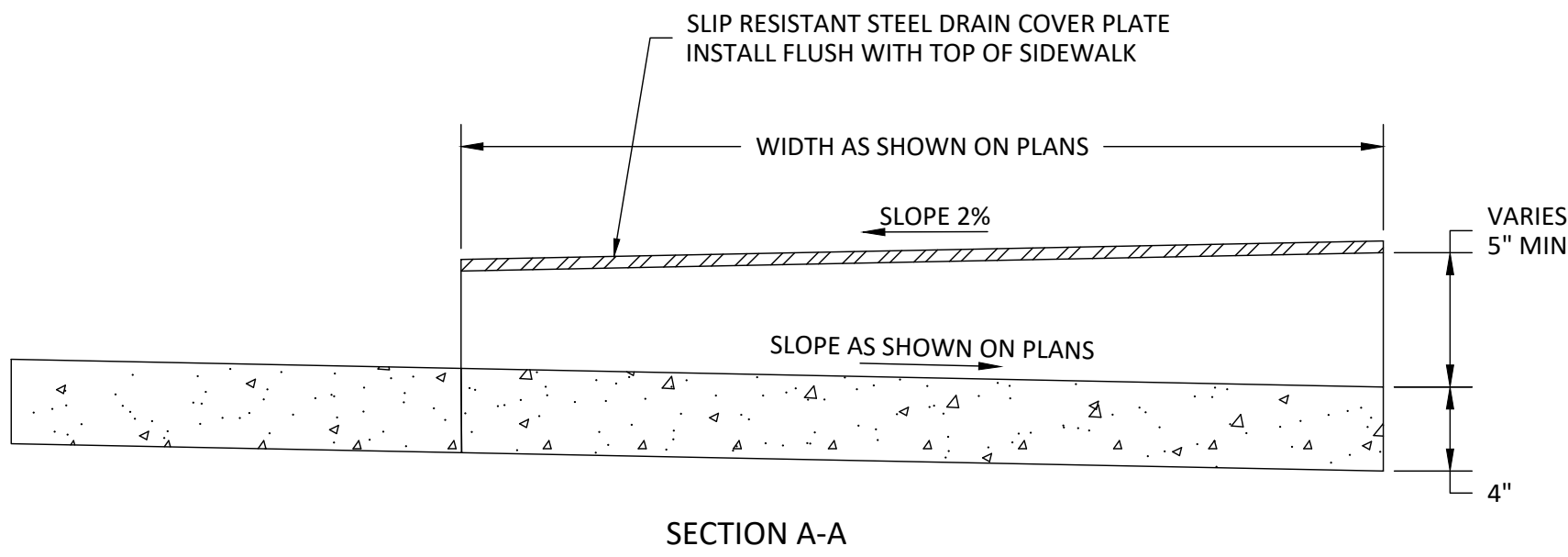
REVISIONS:	
No.	Date
1	ADDENDUM 3 9/2/2021
CIVIL SITE LAYOUT PLAN	
C02	
© WRA Architects, Inc. 2020	



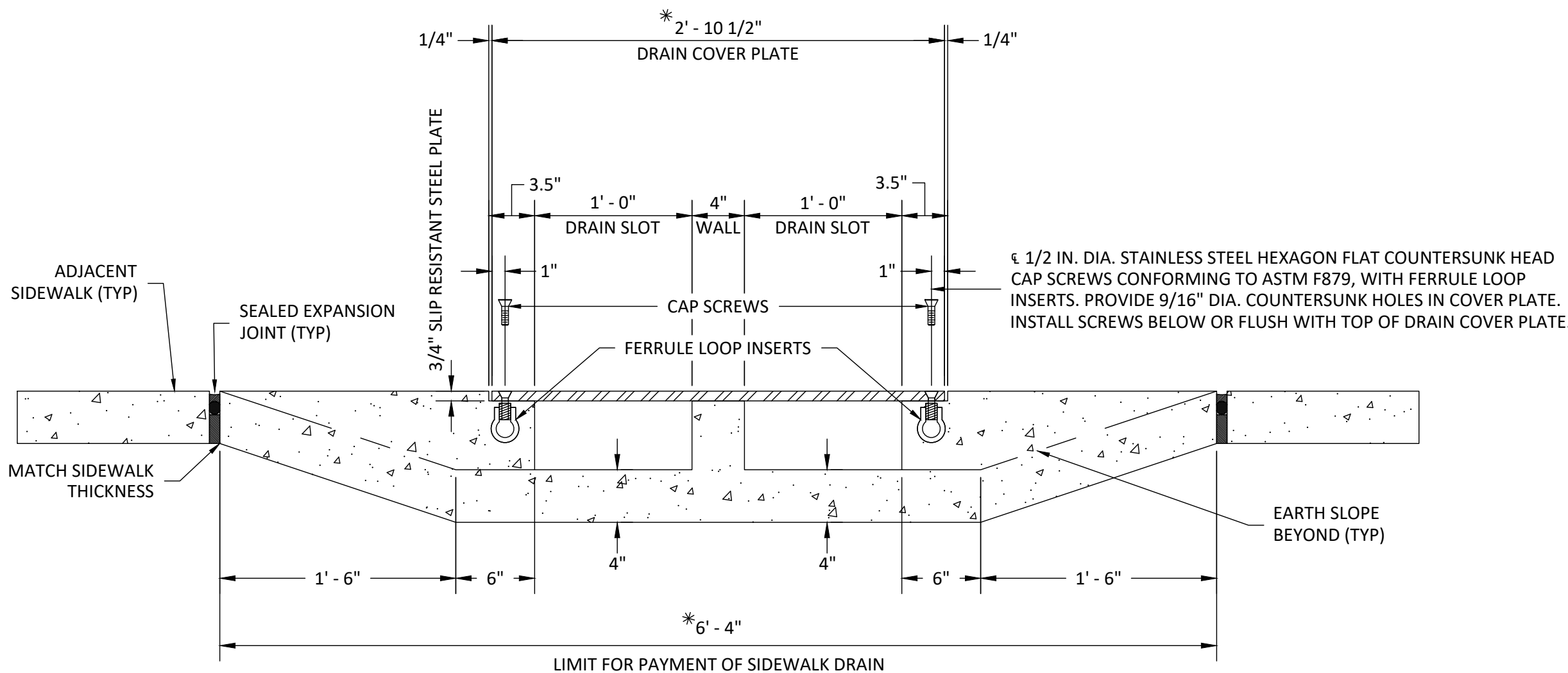
ISOMETRIC VIEW
SHOWING SINGLE DRAIN OPENING



EXPANSION JOINT DETAIL



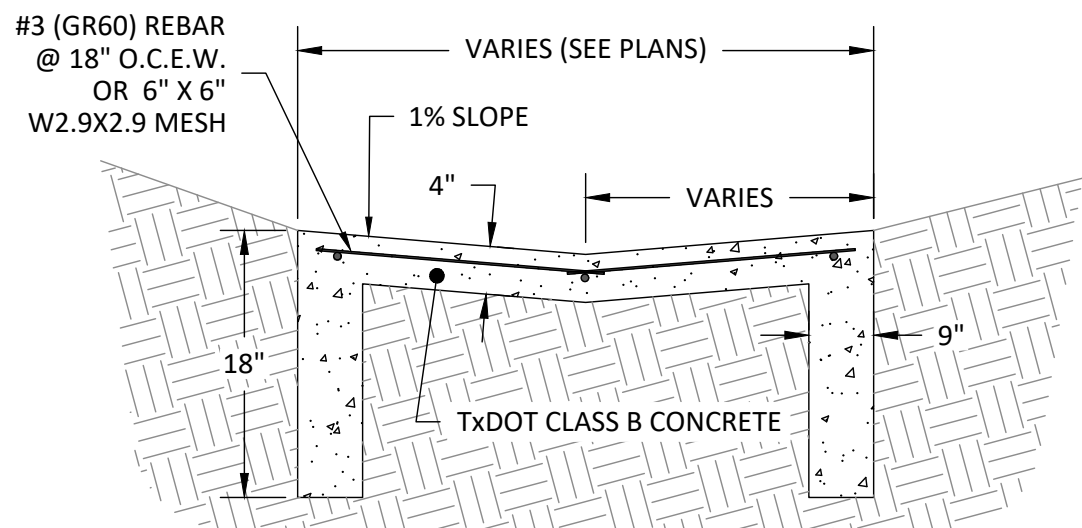
SECTION A-A



SECTION B-B
SHOWING TWO DRAIN SLOT OPENINGS

* NOTE:
INCREASE OR DECREASE 1' - 4" FOR EACH
DRAIN SLOT ADDED OR REMOVED

1 SIDEWALK DRAIN DETAILS
N.T.S.



2 PILOT CHANNEL TYPICAL SECTION
N.T.S.

CELL INTENTIONALLY LEFT BLANK

3 DETAIL NAME
N.T.S.

CELL INTENTIONALLY LEFT BLANK

4 DETAIL NAME
N.T.S.

CELL INTENTIONALLY LEFT BLANK

5 DETAIL NAME
N.T.S.

GENERAL NOTES

- EXISTING CONDITIONS MAY VARY FROM DIMENSIONS SHOWN. FIELD VERIFY ALL DIMENSIONS AND ADJUST DIMENSIONS OF PROPOSED WORK AS DIRECTED.
- ALIGN STEEL PLATE WITH EXISTING SIDEWALK GRADES.
- STEEL DRAIN COVER PLATES WILL BE MEASURED AND PAID FOR AS ITEM 442. FASTENERS, HARDWARE, AND REINFORCING STEEL WILL NOT BE MEASURED OR PAID FOR SEPARATELY, BUT WILL BE CONSIDERED SUBSIDIARY TO THE VARIOUS BID ITEMS.
- REINFORCING STEEL SHALL CONFORM TO THE REQUIREMENTS OF ITEM 440, "REINFORCEMENT FOR CONCRETE".
- IF USED, STEEL REINFORCING IN SIDEWALK DRAIN SHALL BE NO. 3 UNCOATED, DEFORMED BARS ON 9 IN. CENTERS EACH WAY, PLACED AT THE VERTICAL MID-POINT OF THE SIDEWALK DRAIN THICKNESS. SECURELY TIE STEEL REINFORCING WHERE BARS LAP, INTERSECT, OR CROSS.
- THE SIDEWALK WIDTH AND NUMBER OF DRAIN SLOTS WILL BE SHOWN ON THE PLANS FOR EACH LOCATION.
- HOT-DIP GALVANIZE SLIP RESISTANT STEEL PLATE AFTER FABRICATION IN ACCORDANCE WITH ITEM 445, "GALVANIZING". CHAMFER OR ROUND EDGES APPROXIMATELY 1/16 IN. PRIOR TO GALVANIZING.

SAMPLE APPROVED SLIP RESISTANT PLATE

PRODUCT	MANUFACTURER WEBSITE
MEBAC® #3, STEEL	www.harscoikg.com
ALGRIP™, STEEL	www.algrip.com
SLIPNOT® GRADE 2, STEEL	www.slipnot.com

OTHER, EQUAL COVER PLATES MAY BE SUBMITTED BY THE CONTRACTOR. ALL COVER PLATES MUST BE APPROVED BY THE ENGINEER PRIOR TO ORDERING

BIDDING ADDENDUM No. 3 PLAN SET

BAIRD ISD WELDING ACADEMY

600 W 7TH STREET, BAIRD, TX 79504

REVISIONS:	No.	Date
	1	ADDENDUM 3 9/2/2021

JOB NO.	WRA2101D
DATE:	09/02/2021

CIVIL DETAILS 3

C10