

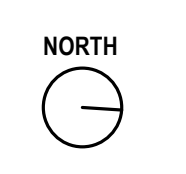
PEDESTAL SCHEDULE		
PEDESTAL	DIMENSIONS	REINFORCEMENT
P1	1'-4" X 1'-8"	(8)#6 VERT W/ #4 TIES @ 8" OC
P2	1'-4" X 2'-4"	(10)#6 VERT W/ #4 TIES @ 8" OC
P3	1'-4" X 1'-10"	TBD
P5	1'-6" X 2'-0"	
W14X48		

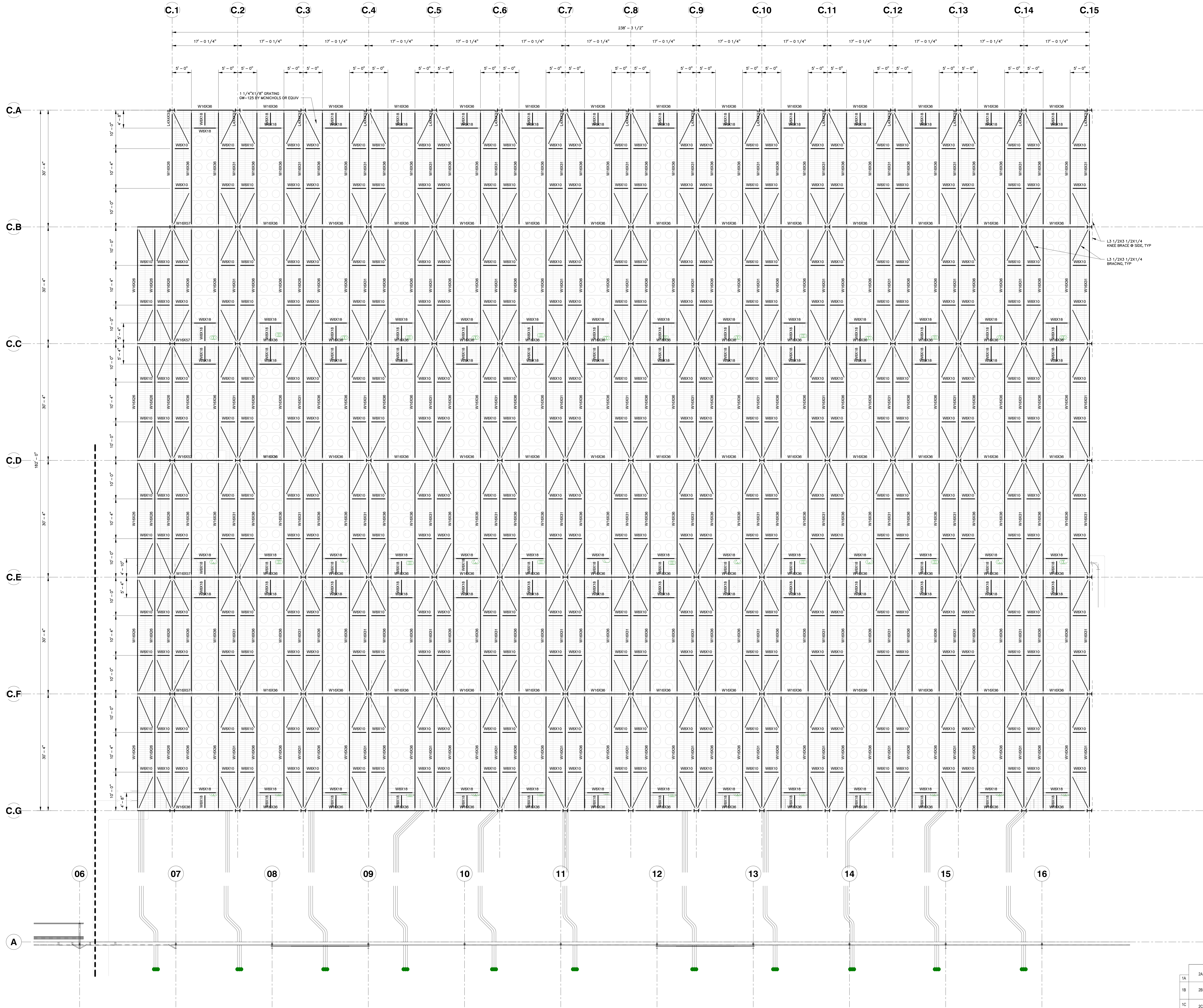
COLUMN FOOTING SCHEDULE		
FOOTING	FOOTING DIMENSIONS	REINFORCEMENT
F4.0	4'-0" X 4'-0" X 1'-0"	TBD
F5.0	5'-0" X 5'-0" X 2'-0"	TBD
F5.1	5'-0" X 5'-0" X 1'-6"	TBD
F6.0	6'-0" X 6'-0" X 1'-6"	TBD
F7.0	7'-0" X 7'-0" X 1'-6"	TBD
F8.0	8'-0" X 8'-0" X 1'-6"	TBD
F15.0	15'-0" X 15'-0" X 2'-0"	TBD

- FOUNDATION PLAN NOTES**
- ELEVATIONS ARE BASED ON A REFERENCE TOP OF SLAB ON GRADE ELEVATION OF 0' - 0", UNO.
 - 1/INTERIOR FOOTING ELEVATION = -2' - 6" UNO.
 - 1/EXTERIOR FOOTING ELEVATION = -2' - 6" UNO.
 - 1/EXT CONCRETE WALL ELEVATION = 1'-2" UNO.
 - INTERIOR SLAB ON GRADE SHALL BE REINFORCED WITH #4000 PLACED OVER A VAPOR BARRIER AND A 6" MINIMUM COMPACTED GRANULAR FILL IN ACCORDANCE WITH THE GEOTECHNICAL REPORT. SEE TYPICAL SLAB ON GRADE DETAILS FOR MORE INFORMATION.
 - "X" INDICATES ISOLATED CONCRETE SPREAD FOOTING. SEE FOOTING SCHEDULE FOR SIZE AND REINFORCEMENT.
 - "W"X" INDICATES CONTINUOUS CONCRETE STRIP FOOTING. SEE FOOTING SCHEDULE FOR SIZE AND REINFORCEMENT.
 - "P"X" INDICATES REINFORCED CONCRETE PEDESTAL. SEE PEDESTAL SCHEDULE FOR SIZE AND REINFORCEMENT.
 - 1/PEDESTAL ELEVATION = 1'-2" UNO.
 - SEE ARCHITECTURAL DRAWINGS FOR DIMENSIONS, ELEVATIONS, WALL SECTIONS, INTERIOR PARTITION STUD WALLS, AND OTHER INFORMATION NOT SHOWN.
 - SEE ARCHITECTURAL AND CIVIL DRAWINGS FOR SIDEWALKS, EXTERIOR CONCRETE SLABS, AND OTHER SITE DETAILS.
 - SEE ARCHITECTURAL DRAWINGS FOR LOCATION OF INTERIOR PARTITION STUD WALLS.
 - EXTERIOR STEEL TO BE PAINTED WITH HIGH PERFORMANCE COATING OR WEATHERPROOFED PER GENERAL NOTES.

FOUNDATION PLAN NOTES
1 1/2" = 1'-0"

1A	2A	3A	4A	5A
1B	2B	3B	4B	5B
1C	2C	3C	4C	5C





1 MECHANICAL PLATFORM T/STL
S112M 1/8" = 1'-0"

1A	2A	3A	4A	5A
1B	2B	3B	4B	5B
1C	2C	3C	4C	5C

